

Universe Parameters

Definition

Name: Advertising Setup

Description:

Connection: Personify71

General information

Created: 2/1/2008 by Administrator

Modified: 4/1/2008 by Administrator

Comments:

Statistics:

- 32 Classes
- 233 Objects
- 21 Tables
- 15 Aliases
- 34 Joins
- 0 Contexts
- 0 Hierarchies
- 26 Conditions

Strategies

Join strategy: Edit Manually (none)

Table strategy: (Built-in) Standard

Object strategy: (Built-in) Standard Renaming

Controls

Limit size of result set to: 5000 rows

Limit size of long text objects to: 1000 characters

Limit execution time to: 10 minutes

Warn if cost estimate exceeds: unchecked

SQL parameters

Query

Allow use of subqueries: yes

Allow use of union, intersect and minus operators: yes

Allow complex conditions in Query Panel: yes

Cartesian products: warn

Multiple paths

Generate several SQL statements for each context: yes

Generate several SQL statements for each measure: yes

Allow selection of multiple contexts: no

Links

No links for this universe

Object List

No classes

Object Properties

Class:	Advertising Media Contacts
Description:	This class contains the Advertising media contact information. Contacts could be editor, sales representative etc.. This class contains name, phone, fax, email and other contact information.
Object:	Media Contact Type Code
Type:	Character
Description:	This is the code that classifies the media contact. E.g. Graphics Artist, Printer, Programmer etc..
Select equivalent:	ADV_MEDIA_CONTACT.CONTACT_TYPE_CODE
Where equivalent:	
Qualification:	dimension
List of values:	00r, editable, manual refresh, not exportable
Security access level:	0
Can be used:	in result, in condition, in sort
Object status:	show

Object:	Media Contact Type Description
Type:	Character
Description:	This is the description of the media contact type.
Select equivalent:	APP_CODE_MEDIA_CONTACT_TYPE.DESCR
Where equivalent:	

Qualification:	dimension
List of values:	00v, editable, manual refresh, not exportable
Security access level:	0
Can be used:	in result, in condition, in sort
Object status:	show

Object:	Contact Name
---------	---------------------

Type: Character
 Description: This is the name of the media contact.
 Select equivalent: ADV_MEDIA_CONTACT.CONTACT_NAME
 Where equivalent:

Qualification: dimension
 List of values: 00w, editable, manual refresh, not exportable
 Security access level: 0
 Can be used: in result, in condition, in sort
 Object status: show

Object: **Media Contact Title**
 Type: Character
 Description: This is the title of the media contact.
 Select equivalent: ADV_MEDIA_CONTACT.CONTACT_TITLE
 Where equivalent:

Qualification: dimension
 List of values: 00x, editable, manual refresh, not exportable
 Security access level: 0
 Can be used: in result, in condition, in sort
 Object status: show

Object: **Media Contact Company**
 Type: Character
 Description: This is the company of the media contact.
 Select equivalent: ADV_MEDIA_CONTACT.CONTACT_COMPANY
 Where equivalent:

Qualification: dimension
 List of values: 00y, editable, manual refresh, not exportable
 Security access level: 0
 Can be used: in result, in condition, in sort
 Object status: show

Object: **Media Contact Phone**
 Type: Character
 Description: This is the phone number of the media contact.
 Select equivalent: ADV_MEDIA_CONTACT.CONTACT_PHONE
 Where equivalent:

Qualification: dimension
 List of values: 010, editable, manual refresh, not exportable

Security access level: 0
 Can be used: in result, in condition, in sort
 Object status: show

Object: **Media Contact Fax**
 Type: Character
 Description: This is the fax number of the media contact.
 Select equivalent: ADV_MEDIA_CONTACT.CONTACT_FAX
 Where equivalent:

Qualification: dimension
 List of values: 011, editable, manual refresh, not exportable
 Security access level: 0
 Can be used: in result, in condition, in sort
 Object status: show

Object: **Media Contact Email Address**
 Type: Character
 Description: This is the email address of the media contact.
 Select equivalent: ADV_MEDIA_CONTACT.CONTACT_EMAIL_ADDRESS
 Where equivalent:

Qualification: dimension
 List of values: 012, editable, manual refresh, not exportable
 Security access level: 0
 Can be used: in result, in condition, in sort
 Object status: show

Class: Advertising Media Linked Products
Description: This class contains information about Advertising products that are linked to the media.

Object: **Linked Product Subsystem**
 Type: Character
 Description: This is the subsystem of the Product linked to media
 .In case of a meeting based media this will be 'MTG'
 .
 Select equivalent: ADV_MEDIA.LINKED_PRODUCT_SUBSYSTEM
 Where equivalent:

Qualification: dimension
 List of values: 016, editable, manual refresh, not exportable
 Security access level: 0

Can be used: in result, in condition, in sort
 Object status: show

Object: **Linked Parent Product**

Type: Character

Description: This is the product linked to the media. E.g. in case of a meeting based media this will be the parent product code of the meeting.

Select equivalent: ADV_MEDIA.LINKED_PARENT_PRODUCT

Where equivalent:

Qualification: dimension

List of values: 014, editable, manual refresh, not exportable

Security access level: 0

Can be used: in result, in condition, in sort

Object status: show

Object: **Linked Product Code**

Type: Character

Description: This is the product code for the product linked to a media. E.g. for a meeting based media it will be the product code of the meeting.

Select equivalent: ADV_MEDIA.LINKED_PRODUCT_CODE

Where equivalent:

Qualification: dimension

List of values: 015, editable, manual refresh, not exportable

Security access level: 0

Can be used: in result, in condition, in sort

Object status: show

Object: **Linked Product Short Name**

Type: Character

Description: This is the short name of the product linked to a media. E.g. for a meeting based media it will be the

product short name of the meeting.

Select equivalent: ADV_MEDIA.LINKED_PRODUCT_SHORT_NAME
Where equivalent:

Qualification: dimension
List of values: 017, editable, manual refresh, not exportable
Security access level: 0
Can be used: in result, in condition, in sort
Object status: show

Class:

Subscription Issue Advertising Info

Description:

Object: **Issue Sequence Number**
Type: Number
Description: This is the issue sequence number. It is possible for a user to manually create an issue record, and to override what Personify calculates as the next ISSUE_SEQ number. This is allowed, subject to certain rules. The rule is that issue records must stay in order by issue date when sorted by issue_seq number. So the issue date of an issue record must be less than the issue date of any issue record where issue_seq is greater than that record's issue_seq number. The the issue date of an issue record must be greater than the issue date of any issue record where issue_seq is less than that record's issue_seq number.

Select equivalent: SUB_ISSUE.ISSUE_SEQ
Where equivalent:

Qualification: dimension
List of values: 0rr, editable, manual refresh, not exportable

Security access level: 0
 Can be used: in result, in condition, in sort
 Object status: show

Object: **Supplement Sequence Number**
 Type: Number
 Description: If record is an issue, this is set to 0.
 If record is a supplement,
 this is set to (max(Supplement_Seq) + 1) for the issue to which the supplement is linked. Therefore, the first supplement for an issue has a supplement sequence of 1, the second supplement for an issue has a supplement sequence of 2, etc.

Select equivalent: SUB_ISSUE.SUPPLEMENT_SEQ
 Where equivalent:

Qualification: dimension
 List of values: Ors, editable, manual refresh, not exportable
 Security access level: 0
 Can be used: in result, in condition, in sort
 Object status: show

Object: **Volume**
 Type: Number
 Description: This is the volume number of the issue. For subscription products that are volume-based, a full set of issues must be created. The VOLUME number for the first set of issues is incremented by 1 (i.e., max(Sub_Issue.VOLUME) + 1 for the selected SUB product).
 If the user has specified that more than one volume should be created, the same logic is used for the

next set of issues, until
 issues for the specified n
 umber of volumes have bee
 n created.

Select equivalent: SUB_ISSUE.VOLUME
 Where equivalent:

Qualification: dimension
 List of values: Ort, editable, manual refresh, not exportable
 Security access level: 0
 Can be used: in result, in condition, in sort
 Object status: show

Object: **Issue**
Type: Character
Description: This is the issue.
 Select equivalent: SUB_ISSUE.ISSUE
 Where equivalent:

Qualification: dimension
 List of values: Oru, editable, manual refresh, not exportable
 Security access level: 0
 Can be used: in result, in condition, in sort
 Object status: show

Object: **Issue Description**
Type: Character
Description: If Volume is null, then the description defaults to 'Issue ` + Issue.
 If Volume is not null, the
 n the description defaults
 to 'Volume ` + Volume + `
 , Issue' + Issue.

Select equivalent: SUB_ISSUE.DESCR
 Where equivalent:

Qualification: dimension
 List of values: Orv, editable, manual refresh, not exportable
 Security access level: 0
 Can be used: in result, in condition, in sort
 Object status: show

Object: **Issue Date**

Type: Date
 Description: The official date of the issue.
 Select equivalent: SUB_ISSUE.ISSUE_DATE
 Where equivalent:

Qualification: dimension
 List of values: 0rw, editable, manual refresh, not exportable
 Security access level: 0
 Can be used: in result, in condition, in sort
 Object status: show

Object: **Fulfill Date**
 Type: Date
 Description: The date the subscription renewal process was run to fulfill this issue.
 Select equivalent: SUB_ISSUE.FULFILL_DATE
 Where equivalent:

Qualification: dimension
 List of values: 0rx, editable, manual refresh, not exportable
 Security access level: 0
 Can be used: in result, in condition, in sort
 Object status: show

Object: **Mail Date**
 Type: Character
 Description: The date the issue was mailed.
 Select equivalent: SUB_ISSUE.MAIL_DATE
 Where equivalent:

Qualification: dimension
 List of values: 0sl, editable, manual refresh, not exportable
 Security access level: 0
 Can be used: in result, in condition, in sort
 Object status: show

Object: **Pages**
 Type: Number
 Description: The Number of pages in the issue.
 Select equivalent: SUB_ISSUE.PAGES
 Where equivalent:

Qualification: dimension
 List of values: 0s6, editable, manual refresh, not exportable

Security access level: 0
Can be used: in result, in condition, in sort
Object status: show

Object: **Start Page**
Type: Number
Description: The start page of the issue.
Select equivalent: SUB_ISSUE.START_PAGE
Where equivalent:

Qualification: dimension
List of values: 0s7, editable, manual refresh, not exportable
Security access level: 0
Can be used: in result, in condition, in sort
Object status: show

Object: **Adv Pages**
Type: Number
Description: The number of ADV pages in the issue.
Select equivalent: SUB_ISSUE.ADV_PAGES
Where equivalent:

Qualification: dimension
List of values: 0s8, editable, manual refresh, not exportable
Security access level: 0
Can be used: in result, in condition, in sort
Object status: show

Object: **Ad Space Close Date**
Type: Date
Description: The date when the Ad space was closed.
Select equivalent: SUB_ISSUE.AD_SPACE_CLOSE_DATE
Where equivalent:

Qualification: dimension
List of values: 0se, editable, manual refresh, not exportable
Security access level: 0
Can be used: in result, in condition, in sort
Object status: show

Object: **Digital File Due Date**
Type: Date

Description: This is the date when the digital file is due.
Select equivalent: SUB_ISSUE.DIGITAL_FILE_DUE_DATE
Where equivalent:

Qualification: dimension
List of values: 0sf, editable, manual refresh, not exportable
Security access level: 0
Can be used: in result, in condition, in sort
Object status: show

Object: **Art Due Date**
Type: Date
Description: This is the date when the Art is due.
Select equivalent: SUB_ISSUE.ART_DUE_DATE
Where equivalent:

Qualification: dimension
List of values: 0sg, editable, manual refresh, not exportable
Security access level: 0
Can be used: in result, in condition, in sort
Object status: show

Object: **Copy Due Date**
Type: Date
Description: This is the copy due date.
Select equivalent: SUB_ISSUE.COPY_DUE_DATE
Where equivalent:

Qualification: dimension
List of values: 0sh, editable, manual refresh, not exportable
Security access level: 0
Can be used: in result, in condition, in sort
Object status: show

Object: **Camera Ready Due Date**
Type: Date
Description: This is the Camera ready due date.
Select equivalent: SUB_ISSUE.CAMERA_READY_DUE_DATE
Where equivalent:

Qualification: dimension
List of values: 0si, editable, manual refresh, not exportable
Security access level: 0

Can be used: in result, in condition, in sort
 Object status: show

Object: **Adv Display Ad Pages**
 Type: Number
 Description: These are the number of display AD Advertising pages.
 Select equivalent: SUB_ISSUE.ADV_DISPLAY_AD_PAGES
 Where equivalent:

Qualification: dimension
 List of values: 0sj, editable, manual refresh, not exportable
 Security access level: 0
 Can be used: in result, in condition, in sort
 Object status: show

Object: **Adv Classified Ad Pages**
 Type: Number
 Description: These are the number of classified AD Advertising pages.
 Select equivalent: SUB_ISSUE.ADV_CLASSIFIED_AD_PAGES
 Where equivalent:

Qualification: dimension
 List of values: 0sk, editable, manual refresh, not exportable
 Security access level: 0
 Can be used: in result, in condition, in sort
 Object status: show

Class:	Advertising Media Production Info
Description:	This class contains the Advertising media production information such as art due date, copy due date, total ad page etc.

Object: **Advertising Space Close Date**
 Type: Date
 Description: This is the close date of the advertising space.
 Select equivalent: ADV_MEDIA.AD_SPACE_CLOSE_DATE
 Where equivalent:

Qualification: dimension
 List of values: 019, editable, manual refresh, not exportable
 Security access level: 0
 Can be used: in result, in condition, in sort

Object status: show

Object: **Digital File Due Date**
Type: Date
Description: This is the date by which the digital file will be due for a media.
Select equivalent: ADV_MEDIA.DIGITAL_FILE_DUE_DATE
Where equivalent:

Qualification: dimension
List of values: 01a, editable, manual refresh, not exportable
Security access level: 0
Can be used: in result, in condition, in sort
Object status: show

Object: **Art Due Date**
Type: Date
Description: This is the last date by which the art will be due for a media.
Select equivalent: ADV_MEDIA.ART_DUE_DATE
Where equivalent:

Qualification: dimension
List of values: 01b, editable, manual refresh, not exportable
Security access level: 0
Can be used: in result, in condition, in sort
Object status: show

Object: **Copy Due Date**
Type: Date
Description: This is the date when the ad copy is due.
Select equivalent: ADV_MEDIA.COPY_DUE_DATE
Where equivalent:

Qualification: dimension
List of values: 01c, editable, manual refresh, not exportable
Security access level: 0
Can be used: in result, in condition, in sort
Object status: show

Object: **Camera Ready Due Date**
Type: Date
Description: This is the camera ready due date.
Select equivalent: ADV_MEDIA.CAMERA_READY_DUE_DATE

Where equivalent:

Qualification: dimension
 List of values: 01d, editable, manual refresh, not exportable
 Security access level: 0
 Can be used: in result, in condition, in sort
 Object status: show

Object: **Days Before The Start Of Web Ad When The Material Is Due**
 Type: Number
 Description: This is the number of days before the web ad when the material for the ad will be due.
 Select equivalent: ADV_MEDIA.DAYS_BEFORE_START_WEB_AD_MATERIAL_DUE
 Where equivalent:

Qualification: dimension
 List of values: 01j, editable, manual refresh, not exportable
 Security access level: 0
 Can be used: in result, in condition, in sort
 Object status: show

Class:	Page Info
Description:	

Object: **Total Pages**
 Type: Number
 Description: This is the total pages in the advertising media.
 Select equivalent: ADV_MEDIA.PAGES
 Where equivalent:

Qualification: dimension
 List of values: 01e, editable, manual refresh, not exportable
 Security access level: 0
 Can be used: in result, in condition, in sort
 Object status: show

Object: **Start Page**
 Type: Character
 Description: This is the start page number of the advertising media.
 Select equivalent: ADV_MEDIA.START_PAGE
 Where equivalent:

Qualification: dimension
 List of values: 01f, editable, manual refresh, not exportable

Security access level: 0
 Can be used: in result, in condition, in sort
 Object status: show

Object: **Display Ad Pages**
 Type: Number
 Description: These are the total number of pages reserved in the media for the display ads.
 Select equivalent: ADV_MEDIA.ADV_DISPLAY_AD_PAGES
 Where equivalent:

Qualification: dimension
 List of values: 01h, editable, manual refresh, not exportable
 Security access level: 0
 Can be used: in result, in condition, in sort
 Object status: show

Object: **Classified Ad Pages**
 Type: Number
 Description: These are the total classified ad pages in the media.
 Select equivalent: ADV_MEDIA.ADV_CLASSIFIED_AD_PAGES
 Where equivalent:

Qualification: dimension
 List of values: 01i, editable, manual refresh, not exportable
 Security access level: 0
 Can be used: in result, in condition, in sort
 Object status: show

Object: **Total Ad Pages**
 Type: Number
 Description: These are the total ad pages in the advertising media.
 Select equivalent: ADV_MEDIA.ADV_PAGES
 Where equivalent:

Qualification: dimension
 List of values: 01g, editable, manual refresh, not exportable
 Security access level: 0
 Can be used: in result, in condition, in sort
 Object status: show

Class: Ad Type Codes
Description: This class contains information about Ad type codes.

Object: **Ad Type Code**
Type: Character
Description: This code represents the type of ad. E.g. BANNER, INSERT, DISPLAY, CLASSIFIED etc.. These values are to be defined by the user in the system.
Select equivalent: ADV_AD_TYPE.AD_TYPE_CODE
Where equivalent:

Qualification: dimension
List of values: 01k, editable, manual refresh, not exportable
Security access level: 0
Can be used: in result, in condition, in sort
Object status: show

Object: **Ad Type Description**
Type: Character
Description: This is the description of the ad type.
Select equivalent: ADV_AD_TYPE.DESCR
Where equivalent:

Qualification: dimension
List of values: 01l, editable, manual refresh, not exportable
Security access level: 0
Can be used: in result, in condition, in sort
Object status: show

Object: **Enable for Print Product?**
Type: Character
Description: When this flag is checked for an ad type code, the code will appear in the validation select list of ad type codes for an advertising product with a product type code that has been identified as a Print Ad Product in the advertising or unit setup.
Select equivalent: ADV_AD_TYPE.ENABLE_FOR_PRINT_PRODUCT_FLAG
Where equivalent:

Qualification: dimension
 List of values: 01m, editable, manual refresh, not exportable
 Security access level: 0
 Can be used: in result, in condition, in sort
 Object status: show

Object: **Enable for Web Product?**

Type: Character

Description: When this flag is checked for an ad type code, the code will appear in the validation select list of ad type codes for an advertising product with a product type code that has been identified as a Web Ad Product in the advertising org unit setup.

Select equivalent: ADV_AD_TYPE.ENABLE_FOR_WEB_PRODUCT_FLAG

Where equivalent:

Qualification: dimension
 List of values: 01n, editable, manual refresh, not exportable
 Security access level: 0
 Can be used: in result, in condition, in sort
 Object status: show

Object: **Enable For All Products?**

Type: Character

Description: When this flag is checked for an ad type code, the code will appear in the validation select list of ad type codes for all advertising products, regardless of product type code. In addition to Print Ad Products and Web Ad Products, advertising products might be for sponsorships, rebates, program enrollment fees, etc.

Select equivalent: ADV_AD_TYPE.ENABLE_FOR_ALL_PRODUCTS_FLAG

Where equivalent:

Qualification: dimension
 List of values: 01o, editable, manual refresh, not exportable
 Security access level: 0
 Can be used: in result, in condition, in sort
 Object status: show

Object: **Include in Display Ad Page Count?**
 Type: Character
 Description: This indicates if the advertisements with this ad type will be included in the display ad page count.
 Select equivalent: ADV_AD_TYPE.INCLUDE_IN_DISPLAY_AD_PAGE_COUNT_FLAG
 Where equivalent:

Qualification: dimension
 List of values: 01p, editable, manual refresh, not exportable
 Security access level: 0
 Can be used: in result, in condition, in sort
 Object status: show

Object: **Is Ad Type Active?**
 Type: Character
 Description: This indicates if the ad type is active?
 Select equivalent: ADV_AD_TYPE.ACTIVE_FLAG
 Where equivalent:

Qualification: dimension
 List of values: 01q, editable, manual refresh, not exportable
 Security access level: 0
 Can be used: in result, in condition, in sort
 Object status: show

Class:	Ad Size Codes
Description:	This class contains information about Ad size codes.

Object: **Ad Size Code**
 Type: Character
 Description: This code represents the size of the advertisement. E.g. FULLPAGE, HALFPAGE, QUATERPAGE etc.. These values are to be defined by

the user in the system.
 Select equivalent: ADV_AD_SIZE.AD_SIZE_CODE
 Where equivalent:

Qualification: dimension
 List of values: 01r, editable, manual refresh, not exportable
 Security access level: 0
 Can be used: in result, in condition, in sort
 Object status: show

Object: **Ad Size Description**
 Type: Character
 Description: This is the description of the ad size.
 Select equivalent: ADV_AD_SIZE.DESCR
 Where equivalent:

Qualification: dimension
 List of values: 01s, editable, manual refresh, not exportable
 Security access level: 0
 Can be used: in result, in condition, in sort
 Object status: show

Object: **Enable for Print Product?**
 Type: Character
 Description: When this flag is checked for an ad type code, the code will appear in the validation select list of ad type codes for an advertising product with a product type code that has been identified as a Print Ad Product in the advertising or unit setup.
 Select equivalent: ADV_AD_SIZE.ENABLE_FOR_PRINT_PRODUCT_FLAG
 Where equivalent:

Qualification: dimension
 List of values: 01t, editable, manual refresh, not exportable
 Security access level: 0
 Can be used: in result, in condition, in sort
 Object status: show

Object: **Enable for Web Product?**
Type: Character
Description: When this flag is checked for an ad type code, the code will appear in the validation select list of ad type codes for an advertising product with a product type code that has been identified as a Web Ad Product in the advertising organization setup.

Select equivalent: ADV_AD_SIZE.ENABLE_FOR_WEB_PRODUCT_FLAG
Where equivalent:

Qualification: dimension
List of values: 01u, editable, manual refresh, not exportable
Security access level: 0
Can be used: in result, in condition, in sort
Object status: show

Object: **Enable For All Products?**
Type: Character
Description: When this flag is checked for an ad type code, the code will appear in the validation select list of ad type codes for all advertising products, regardless of product type code. In addition to Print Ad Products and Web Ad Products, advertising products might be for sponsorships, rebates, program enrollment fees, etc.

Select equivalent: ADV_AD_SIZE.ENABLE_FOR_ALL_PRODUCTS_FLAG
Where equivalent:

Qualification: dimension
List of values: 01v, editable, manual refresh, not exportable
Security access level: 0
Can be used: in result, in condition, in sort
Object status: show

Object: **Ad Size Percentage**
 Type: Character
 Description: This is the percentage of advertising space occupied by this ad size.
 Select equivalent: ADV_AD_SIZE.AD_SIZE_PCT
 Where equivalent:

Qualification: dimension
 List of values: 01w, editable, manual refresh, not exportable
 Security access level: 0
 Can be used: in result, in condition, in sort
 Object status: show

Object: **Is Ad Size Active?**
 Type: Character
 Description: This indicates if the ad size is active?
 Select equivalent: ADV_AD_SIZE.ACTIVE_FLAG
 Where equivalent:

Qualification: dimension
 List of values: 01x, editable, manual refresh, not exportable
 Security access level: 0
 Can be used: in result, in condition, in sort
 Object status: show

Object: **Frequency Credit Qty**
 Type: Number
 Description: This is the quantity of credit given for frequency.
 Select equivalent: ADV_AD_SIZE.FREQUENCY_CREDIT_QTY
 Where equivalent:

Qualification: dimension
 List of values: 01y, editable, manual refresh, not exportable
 Security access level: 0
 Can be used: in result, in condition, in sort
 Object status: show

Class: Ad Color and Webmedia Codes Description: This class contains information about Ad color and webmedia codes.
--

Object: **Ad Color and Webmedia Code**
 Type: Character
 Description: This code represents the a
 dvertisement color/webmed

ia. e.g. 2COLOR, 4COLOR,
 FLASH, RICH etc.. These v
 alues are to be defined by
 the user in the system.
 Select equivalent: ADV_AD_COLOR_WEBMEDIA.AD_COLOR_WEBMEDIA_CODE
 Where equivalent:
 Qualification: dimension
 List of values: 020, editable, manual refresh, not exportable
 Security access level: 0
 Can be used: in result, in condition, in sort
 Object status: show

Object: **Ad Color and Webmedia Description**
 Type: Character
 Description: This is the description of the ad color and webmedia.
 Select equivalent: ADV_AD_COLOR_WEBMEDIA.DESCR
 Where equivalent:

Qualification: dimension
 List of values: 021, editable, manual refresh, not exportable
 Security access level: 0
 Can be used: in result, in condition, in sort
 Object status: show

Object: **Enable for Print Product?**
 Type: Character
 Description: When this flag is checked
 for an ad type code, the c
 ode will appear in the val
 idation select list of ad t
 ype codes for an advertisi
 ng product with a product
 type code that has been id
 entified as a Print Ad Pro
 duct in the advertising or
 g unit setup.
 Select equivalent: ADV_AD_COLOR_WEBMEDIA.ENABLE_FOR_PRINT_PRODUCT_FLAG
 Where equivalent:

Qualification: dimension
 List of values: 022, editable, manual refresh, not exportable
 Security access level: 0
 Can be used: in result, in condition, in sort

Object status: show

Object: **Enable for Web Product?**

Type: Character

Description: When this flag is checked for an ad type code, the code will appear in the validation select list of ad type codes for an advertising product with a product type code that has been identified as a Web Ad Product in the advertising org unit setup.

Select equivalent: ADV_AD_COLOR_WEBMEDIA.ENABLE_FOR_WEB_PRODUCT_FLAG

Where equivalent:

Qualification: dimension

List of values: 023, editable, manual refresh, not exportable

Security access level: 0

Can be used: in result, in condition, in sort

Object status: show

Object: **Enable For All Products?**

Type: Character

Description: When this flag is checked for an ad type code, the code will appear in the validation select list of ad type codes for an advertising product with a product type code that has been identified as a Web Ad Product in the advertising org unit setup.

Select equivalent: ADV_AD_COLOR_WEBMEDIA.ENABLE_FOR_ALL_PRODUCTS_FLAG

Where equivalent:

Qualification: dimension

List of values: 024, editable, manual refresh, not exportable

Security access level: 0

Can be used: in result, in condition, in sort

Object status: show

Object: **Is the Ad Color and Webmedia Active?**
 Type: Character
 Description: This indicates if the ad color and webmedia is active.
 Select equivalent: ADV_AD_COLOR_WEBMEDIA.ACTIVE_FLAG
 Where equivalent:

Qualification: dimension
 List of values: 025, editable, manual refresh, not exportable
 Security access level: 0
 Can be used: in result, in condition, in sort
 Object status: show

Class: Ad Premium Position Codes
Description: This class contains information about Ad premium position codes.

Object: **Ad Premium Position Code**
 Type: Character
 Description: This code represents the a
 dvertisement position. Eg.
 FRONTPAGE, HOMEPAGE, CH
 ECKOUT, FRONTCOVER etc..
 These values are to be de
 fined by the user in the s
 ystem.

Select equivalent: ADV_PREMIUM_POSITION.PREMIUM_POSITION_CODE
 Where equivalent:

Qualification: dimension
 List of values: 027, editable, manual refresh, not exportable
 Security access level: 0
 Can be used: in result, in condition, in sort
 Object status: show

Object: **Ad Premium Position Description**
 Type: Character
 Description: This is the description of the ad premium position code.
 Select equivalent: ADV_PREMIUM_POSITION.DESCR
 Where equivalent:

Qualification: dimension
 List of values: 028, editable, manual refresh, not exportable
 Security access level: 0
 Can be used: in result, in condition, in sort
 Object status: show

Object:	Enable for Print Product?
Type:	Character
Description:	When this flag is checked for an ad type code, the code will appear in the validation select list of ad type codes for an advertising product with a product type code that has been identified as a Print Ad Product in the advertising org unit setup.
Select equivalent:	ADV_PREMIUM_POSITION.ENABLE_FOR_PRINT_PRODUCT_FLAG
Where equivalent:	
Qualification:	dimension
List of values:	02a, editable, manual refresh, not exportable
Security access level:	0
Can be used:	in result, in condition, in sort
Object status:	show

Object:	Enable for Web Product?
Type:	Character
Description:	When this flag is checked for an ad type code, the code will appear in the validation select list of ad type codes for an advertising product with a product type code that has been identified as a Web Ad Product in the advertising org unit setup.
Select equivalent:	ADV_PREMIUM_POSITION.ENABLE_FOR_WEB_PRODUCT_FLAG
Where equivalent:	
Qualification:	dimension
List of values:	02b, editable, manual refresh, not exportable
Security access level:	0
Can be used:	in result, in condition, in sort
Object status:	show

Object:	Enable For All Products?
Type:	Character
Description:	When this flag is checked for an ad type code, the code will appear in the validation select list of ad type codes for an advertising product with a product type code that has been identified as a Web Ad Product in the advertising org unit setup.
Select equivalent:	ADV_PREMIUM_POSITION.ENABLE_FOR_ALL_PRODUCTS_FLAG
Where equivalent:	
Qualification:	dimension
List of values:	02c, editable, manual refresh, not exportable
Security access level:	0
Can be used:	in result, in condition, in sort
Object status:	show

Object:	Is Ad Premium Position Active?
Type:	Character
Description:	This indicates if the ad position is active.
Select equivalent:	ADV_PREMIUM_POSITION.ACTIVE_FLAG
Where equivalent:	
Qualification:	dimension
List of values:	029, editable, manual refresh, not exportable
Security access level:	0
Can be used:	in result, in condition, in sort
Object status:	show

Object:	Max Available Page Percentage
Type:	Number
Description:	This is the maximum available percentage of the advertising space that the ad's position occupies.
Select equivalent:	ADV_PREMIUM_POSITION.MAX_AVAILABLE_PAGE_PCT
Where equivalent:	
Qualification:	dimension
List of values:	02d, editable, manual refresh, not exportable

Security access level: 0
 Can be used: in result, in condition, in sort
 Object status: show

Class: Advertising Product Setup Info

Description: This class contains the Advertising product setup information such as product type, ad type, ad size, premium position etc..

Object: **Adv Product ID**
 Type: Character
 Description: This is a system generated number that uniquely identifies an ADV product.
 Select equivalent: ADV_PRODUCT.PRODUCT_ID
 Where equivalent:

Qualification: dimension
 List of values: 02e, editable, manual refresh, not exportable
 Security access level: 0
 Can be used: in result, in condition, in sort
 Object status: show

Object: Parent Product Code

Type: Character
 Description: This is the parent product code of the Advertising product. An advertising "product" in Personify is what you use to "order" a "half-page ad in the National Journal" or a "quarter page ad in the meeting directory" or "a one-month display of a banner ad on a web page". It is typical for multiple advertising products to be available for a publication. For instance, there may be a product for full page, half page, quarter page, classified ad, etc. for each journal, as well as miscellaneous advertising products for in

serts, bellyband wraps or article reprints.

An advertising media will always be the parent product code of an advertising product. The media code also functions as a way to tie various advertising products together for ordering, reporting, and analysis purposes. For instance, you may define the National Journal as an advertising media, and then associate that media code with each advertising product referencing the journal.

Select equivalent:

PRODUCT.PARENT_PRODUCT

Where equivalent:

Qualification:

dimension

List of values:

0o1, editable, manual refresh, not exportable

Security access level:

0

Can be used:

in result, in condition, in sort

Object status:

show

Object:

Product Code

Type:

Character

Description:

This is the product code of the Advertising product. An advertising "product" in Personify is what you use to "order" a "half-page ad in the National Journal" or a "quarter page ad in the meeting directory" or "a one-month display of a banner ad on a web page". It is typical for multiple advertising products to be available for a publication. For instance, there may be a product for full page, half page, quarter page, classified ad, etc

. for each journal, as well as miscellaneous advertising products for inserts, bellyband wraps or article reprints.

An advertising media will always be the parent product code of an advertising product. The media code also functions as a way to tie various advertising products together for ordering, reporting, and analysis purposes. For instance, you may define the National Journal as an advertising media, and then associate that media code with each advertising product referencing the journal.

Select equivalent: PRODUCT.PRODUCT_CODE
Where equivalent:

Qualification: dimension
List of values: no
Security access level: 0
Can be used: in result, in condition, in sort
Object status: show

Object: **Product Short Name**
Type: Character
Description: This is the advertising product short name.
Select equivalent: PRODUCT.SHORT_NAME
Where equivalent:

Qualification: dimension
List of values: no
Security access level: 0
Can be used: in result, in condition, in sort
Object status: show

Object: **Product Long Name**
Type: Character
Description: This is the advertising product short name.

Select equivalent: PRODUCT.LONG_NAME
Where equivalent:

Qualification: dimension
List of values: no
Security access level: 0
Can be used: in result, in condition, in sort
Object status: show

Object: **Master Product?**
Type: Character
Description: This indicates if the product is a master product.
Select equivalent: PRODUCT.MASTER_PRODUCT_FLAG
Where equivalent:

Qualification: dimension
List of values: no
Security access level: 0
Can be used: in result, in condition, in sort
Object status: show

Object: **Product Type Code**
Type: Character
Description: This is the product type code of the advertising product. E.g. Benefit, Classified, Insert,Print_Display, Web_Display etc..
Select equivalent: PRODUCT.PRODUCT_TYPE_CODE
Where equivalent:

Qualification: dimension
List of values: no
Security access level: 0
Can be used: in result, in condition, in sort
Object status: show

Object: **Product Type Description**
Type: Character
Description: This is the product type description.
Select equivalent: PRODUCT_TYPE_APP_CODE.DESCR
Where equivalent:

Qualification: dimension
 List of values: no
 Security access level: 0
 Can be used: in result, in condition, in sort
 Object status: show

Object: **Product Type Sort Order**
 Type: Number
 Description: This is the product type sort order.
 Select equivalent: PRODUCT_TYPE_APP_CODE.DISPLAY_ORDER
 Where equivalent:

Qualification: dimension
 List of values: no
 Security access level: 0
 Can be used: in result, in condition, in sort
 Object status: show

Object: **Product Class**
 Type: Character
 Description: This is the product class
 of the advertising product
 . E.g. Directory, Journal,
 Magazine, Publ etc..
 Select equivalent: PRODUCT.PRODUCT_CLASS_CODE
 Where equivalent:

Qualification: dimension
 List of values: no
 Security access level: 0
 Can be used: in result, in condition, in sort
 Object status: show

Object: **Product Class Description**
 Type: Character
 Description: This is the description of the product class of the product.
 Select equivalent: PRODUCT_CLASS_APP_CODE.DESCR
 Where equivalent:

Qualification: dimension
 List of values: no
 Security access level: 0
 Can be used: in result, in condition, in sort

Object status: show

Object: **Product Status Code**
Type: Character
Description: This is the product status code of the product.
Select equivalent: PRODUCT.PRODUCT_STATUS_CODE
Where equivalent:

Qualification: dimension
List of values: no
Security access level: 0
Can be used: in result, in condition, in sort
Object status: show

Object: **Product Status Date**
Type: Date
Description: This is the date the product status was last changed.
Select equivalent: PRODUCT.PRODUCT_STATUS_DATE
Where equivalent:

Qualification: dimension
List of values: no
Security access level: 0
Can be used: in result, in condition, in sort
Object status: show

Object: **Product Available Date**
Type: Date
Description: This is the date when the product will be available for sale.
Select equivalent: PRODUCT.AVAILABLE_DATE
Where equivalent:

Qualification: dimension
List of values: no
Security access level: 0
Can be used: in result, in condition, in sort
Object status: show

Object: **Product Expiration Date**
Type: Date
Description: This is the product expiration date. After this date the product cannot be sold.
Select equivalent: PRODUCT.EXPIRATION_DATE

Where equivalent:

Qualification: dimension
 List of values: no
 Security access level: 0
 Can be used: in result, in condition, in sort
 Object status: show

Object: **Ad Type Code**
 Type: Character
 Description: This code represents the type of ad. E.g. BANNER, INSERT, DISPLAY, CLASSIFIED etc.. These values are to be defined by the user in the system.
 Select equivalent: ADV_PRODUCT.AD_TYPE_CODE
 Where equivalent:

Qualification: dimension
 List of values: 0o2, editable, manual refresh, not exportable
 Security access level: 0
 Can be used: in result, in condition, in sort
 Object status: show

Object: **Ad Type Description**
 Type: Character
 Description: This is the description of the ad type.
 Select equivalent: ADV_AD_TYPE.DESCR
 Where equivalent:

Qualification: dimension
 List of values: 0o6, editable, manual refresh, not exportable
 Security access level: 0
 Can be used: in result, in condition, in sort
 Object status: show

Object: **Ad Size Code**
 Type: Character
 Description: This code represents the size of the advertisement. E.g. FULLPAGE, HALFPAGE, QUATERPAGE etc.. These va

Select equivalent: lues are to be defined by
 the user in the system.
 Where equivalent: ADV_PRODUCT.AD_SIZE_CODE

Qualification: dimension
 List of values: 0o3, editable, manual refresh, not exportable
 Security access level: 0
 Can be used: in result, in condition, in sort
 Object status: show

Object: Ad Size Description
 Type: Character
 Description: This is the description of the ad size.
 Select equivalent: ADV_AD_SIZE.DESCR
 Where equivalent:

Qualification: dimension
 List of values: 0o7, editable, manual refresh, not exportable
 Security access level: 0
 Can be used: in result, in condition, in sort
 Object status: show

Object: Ad Color Webmedia Code
 Type: Character
 Description: This code represents the a
 dvertisement color/webmed
 ia. e.g. 2COLOR, 4COLOR,
 FLASH, RICH etc.. These v
 alues are to be defined by
 the user in the system.
 Select equivalent: ADV_PRODUCT.AD_COLOR_WEBMEDIA_CODE
 Where equivalent:

Qualification: dimension
 List of values: 0o4, editable, manual refresh, not exportable
 Security access level: 0
 Can be used: in result, in condition, in sort
 Object status: show

Object: Ad Color and Webmedia Description
 Type: Character
 Description: This is the description of the ad color and webmedia.

Select equivalent: ADV_AD_COLOR_WEBMEDIA.DESCR
Where equivalent:

Qualification: dimension
List of values: 0o8, editable, manual refresh, not exportable
Security access level: 0
Can be used: in result, in condition, in sort
Object status: show

Object: **Ad Premium Position Code**

Type: Character

Description: This code represents the a
dvertisement position. Eg.
FRONTPAGE, HOMEPAGE, CH
ECKOUT, FRONTCOVER etc..
These values are to be de
fined by the user in the s
ystem.

Select equivalent: ADV_PRODUCT.AD_PREMIUM_POSITION_CODE
Where equivalent:

Qualification: dimension
List of values: 0o5, editable, manual refresh, not exportable
Security access level: 0
Can be used: in result, in condition, in sort
Object status: show

Object: **Ad Premium Position Description**

Type: Character

Description: This is the description of the ad premium position.

Select equivalent: ADV_PREMIUM_POSITION.DESCR

Where equivalent:

Qualification: dimension
List of values: 0q5, editable, manual refresh, not exportable
Security access level: 0
Can be used: in result, in condition, in sort
Object status: show

Object: **Is Contract Required?**

Type: Character

Description: This indicates if the advertising product requires a contract.

Select equivalent: ADV_PRODUCT.REQUIRES_CONTRACT_FLAG

Where equivalent:

Qualification: dimension
 List of values: 00a, editable, manual refresh, not exportable
 Security access level: 0
 Can be used: in result, in condition, in sort
 Object status: show

Object: **Include in the Page Plan?**
 Type: Character
 Description: This indicates if the advertising product should be included in the page plan.
 Select equivalent: ADV_PRODUCT.INCLUDE_IN_PG_PLAN_FLAG
 Where equivalent:

Qualification: dimension
 List of values: 00b, editable, manual refresh, not exportable
 Security access level: 0
 Can be used: in result, in condition, in sort
 Object status: show

Object: **Include in Percentage Fee Surcharge Calculation?**
 Type: Character
 Description: This indicates if the advertising product should be included in the percentage fee surcharge calculation
 .
 Select equivalent: ADV_PRODUCT.INCLUDE_IN_PCT_FEE_FLAG
 Where equivalent:

Qualification: dimension
 List of values: 00c, editable, manual refresh, not exportable
 Security access level: 0
 Can be used: in result, in condition, in sort
 Object status: show

Object: **Associated Product Type Code**
 Type: Character
 Description: This is the product type of the product associated with the advertising product.
 Select equivalent: ADV_PRODUCT.ASSOCIATED_PRODUCT_TYPE_CODE
 Where equivalent:

Qualification: dimension

List of values: Ood, editable, manual refresh, not exportable
 Security access level: 0
 Can be used: in result, in condition, in sort
 Object status: show

Object: **Associated Product Type Description**
 Type: Character
 Description: This is the description of the associated product's product type.
 Select equivalent: APP_CODE_ASSOCIATED_PRODUCT_TYPE.DESCR
 Where equivalent:

Qualification: dimension
 List of values: Ooe, editable, manual refresh, not exportable
 Security access level: 0
 Can be used: in result, in condition, in sort
 Object status: show

Object: **Invoice Rule Code**
 Type: Character
 Description: An advertising order is in voiced when the advertisement is considered published. The timing depends on the media. For a subscription-based publication, it would be when the issue is mailed. For a meeting, it may be when the meeting begins. For an inventoried product, it may be when the product is available for purchase.
 Based on the Media Type, Personify will set a value for the Invoice Rule Code. Possible values are AVAILABLE_DATE, MTG_START_DATE, ORDER_DATE etc..
 Select equivalent: ADV_PRODUCT.INVOICE_RULE_CODE
 Where equivalent:

Qualification: dimension
 List of values: Ooj, editable, manual refresh, not exportable
 Security access level: 0

Can be used: in result, in condition, in sort
 Object status: show

Class:	Restricted Quantity
Description:	

Object: **Restricted Sale Quantity**
 Type: Number
 Description:

Select equivalent: ADV_PRODUCT.RESTRICTED_SALE_QTY
 Where equivalent:

Qualification: dimension
 List of values: 0og, editable, manual refresh, not exportable
 Security access level: 0
 Can be used: in result, in condition, in sort
 Object status: show

Object: **Restricted Quantity Sold**
 Type: Number
 Description:

Select equivalent: ADV_PRODUCT.RESTRICTED_SOLD_QTY
 Where equivalent:

Qualification: dimension
 List of values: 0oh, editable, manual refresh, not exportable
 Security access level: 0
 Can be used: in result, in condition, in sort
 Object status: show

Object: **Quantity Available for Sale**
 Type: Number
 Description:

Select equivalent: ADV_PRODUCT.RESTRICTED_REMAINING_FOR_SALE_QTY
 Where equivalent:

Qualification: dimension
 List of values: 0oi, editable, manual refresh, not exportable
 Security access level: 0
 Can be used: in result, in condition, in sort

Object status: show

Class:	Advertising Product Rate Info
Description:	

Object: **Rate Structure**
 Type: Character
 Description: This is the structure that defines the customer. They are defined during the system setup. Certain customers such as members vs. non-members receive special rates. The rates for these structures are defined in the rate code.
 Select equivalent: PRODUCT_RATE_CODE.RATE_STRUCTURE
 Where equivalent:
 Qualification: dimension
 List of values: 0sn, editable, manual refresh, not exportable
 Security access level: 0
 Can be used: in result, in condition, in sort
 Object status: show

Object: **Rate Code**
 Type: Character
 Description: The established rate determines the pricing for the rate structure selected. Rate code can be used to define the type of service being provided. Several combinations of rate structure and rate code can be defined for each product. E.g. Rate Structure - 'LIST', Rate Code - '1 Year Membership', Rate Structure - 'LIST', Rate Code - '2 Year Membership' etc..
 Select equivalent: PRODUCT_RATE_CODE.RATE_CODE
 Where equivalent:

Qualification: dimension
 List of values: 0so, editable, manual refresh, not exportable
 Security access level: 0
 Can be used: in result, in condition, in sort
 Object status: show

Object: **Descr**
Type: Character
Description: This is the description of the rate which is a combination of rate structure and rate code.
Select equivalent: PRODUCT_RATE_CODE.DESCR
Where equivalent:

Qualification: dimension
 List of values: 0sp, editable, manual refresh, not exportable
 Security access level: 0
 Can be used: in result, in condition, in sort
 Object status: show

Object: **Priority**
Type: Number
Description:
Select equivalent: PRODUCT_RATE_CODE.SORT_ORDER
Where equivalent:

Qualification: measure
 Aggregate function: Sum
 List of values: 0sq, editable, manual refresh, not exportable
 Security access level: 0
 Can be used: in result, in condition, in sort
 Object status: show

Object: **Short Pay Proc Code**
Type: Character
Description: This fixed code indicates how the system handles short payment situations. Options include:

- Adjust: Accept whatever is paid.
- AR: Create Receivable - I

ndicates that the order can be placed with or without payment. The unpaid portion is considered an accounts receivable for the customer.

•Reject: Do not activate Order unless fully paid.
 Select equivalent: PRODUCT_RATE_CODE.SHORT_PAY_PROC_CODE
 Where equivalent:

Qualification: dimension
 List of values: 0ss, editable, manual refresh, not exportable
 Security access level: 0
 Can be used: in result, in condition, in sort
 Object status: show

Object: **Agency Discount Pct**
 Type: Number
 Description:

Select equivalent: PRODUCT_RATE_CODE.AGENCY_DISCOUNT_PCT
 Where equivalent:

Qualification: measure
 Aggregate function: Sum
 List of values: 0t1, editable, manual refresh, not exportable
 Security access level: 0
 Can be used: in result, in condition, in sort
 Object status: show

Object: **Pay Frequency Code**
 Type: Character
 Description: This is the payment frequency. The possible values are 'INVOICE' and 'MONTHLY'.
 Select equivalent: PRODUCT_RATE_CODE.PAY_FREQUENCY_CODE
 Where equivalent:

Qualification: dimension
 List of values: 0t6, editable, manual refresh, not exportable
 Security access level: 0
 Can be used: in result, in condition, in sort
 Object status: show

Object: **Sales Commission Pct**

Type: Number
 Description:
 Select equivalent: PRODUCT_RATE_CODE.SALES_COMMISSION_PCT
 Where equivalent:
 Qualification: measure
 Aggregate function: Sum
 List of values: 0tg, editable, manual refresh, not exportable
 Security access level: 0
 Can be used: in result, in condition, in sort
 Object status: show

Object: **Audit Type Code**
 Type: Character
 Description:
 Select equivalent: PRODUCT_RATE_CODE.AUDIT_TYPE_CODE
 Where equivalent:
 Qualification: dimension
 List of values: 0tk, editable, manual refresh, not exportable
 Security access level: 0
 Can be used: in result, in condition, in sort
 Object status: show

Object: **Agency Commission Pct**
 Type: Number
 Description:
 Select equivalent: PRODUCT_RATE_CODE.AGENCY_COMMISSION_PCT
 Where equivalent:
 Qualification: measure
 Aggregate function: Sum
 List of values: 0tm, editable, manual refresh, not exportable
 Security access level: 0
 Can be used: in result, in condition, in sort
 Object status: show

Object: **Is Rate Code Active?**
 Type: Character
 Description:

Select equivalent: PRODUCT_RATE_CODE.ACTIVE_FLAG
Where equivalent:

Qualification: dimension
List of values: 0sw, editable, manual refresh, not exportable
Security access level: 0
Can be used: in result, in condition, in sort
Object status: show

Object: **Is this Rate Code available on the web?**
Type: Character
Description:

Select equivalent: PRODUCT_RATE_CODE.ECOMMERCE_FLAG
Where equivalent:

Qualification: dimension
List of values: 0sx, editable, manual refresh, not exportable
Security access level: 0
Can be used: in result, in condition, in sort
Object status: show

Object: **Is this the default rate?**
Type: Character
Description:

Select equivalent: PRODUCT_RATE_CODE.DEFAULT_RATE_FLAG
Where equivalent:

Qualification: dimension
List of values: 0t5, editable, manual refresh, not exportable
Security access level: 0
Can be used: in result, in condition, in sort
Object status: show

Object: **Is this the default web rate?**
Type: Character
Description:

Select equivalent: PRODUCT_RATE_CODE.DEFAULT_RATE_WEB_FLAG
Where equivalent:

Qualification: dimension
 List of values: 0t7, editable, manual refresh, not exportable
 Security access level: 0
 Can be used: in result, in condition, in sort
 Object status: show

Object: **Include In Audit?**
 Type: Character
 Description:

Select equivalent: PRODUCT_RATE_CODE.INCLUDE_IN_AUDIT_FLAG
 Where equivalent:

Qualification: dimension
 List of values: 0te, editable, manual refresh, not exportable
 Security access level: 0
 Can be used: in result, in condition, in sort
 Object status: show

Object: **Use Adv Schedule?**
 Type: Character
 Description:

Select equivalent: PRODUCT_RATE_CODE.USE_ADV_SCHEDULE_FLAG
 Where equivalent:

Qualification: dimension
 List of values: 0tf, editable, manual refresh, not exportable
 Security access level: 0
 Can be used: in result, in condition, in sort
 Object status: show

Object: **Use Pct Fee Calculation?**
 Type: Character
 Description:

Select equivalent: PRODUCT_RATE_CODE.PCT_FEE_FLAG
 Where equivalent:

Qualification: dimension
 List of values: 0th, editable, manual refresh, not exportable
 Security access level: 0
 Can be used: in result, in condition, in sort

Object status: show

Object: **Credits Frequency Fulfillment?**

Type: Character

Description:

Select equivalent: PRODUCT_RATE_CODE.ADV_FULFILLS_FREQUENCY_FLAG

Where equivalent:

Qualification: dimension

List of values: 0ti, editable, manual refresh, not exportable

Security access level: 0

Can be used: in result, in condition, in sort

Object status: show

Object: **Earned Pages?**

Type: Character

Description:

Select equivalent: PRODUCT_RATE_CODE.CREDITS_ADV_EARNED_PAGE_FLAG

Where equivalent:

Qualification: dimension

List of values: 0tj, editable, manual refresh, not exportable

Security access level: 0

Can be used: in result, in condition, in sort

Object status: show

Class:	Advertising Product Pricing Info
--------	---

Description:	
--------------	--

Object: **Currency Code**

Type: Character

Description: This is the currency in which the product pricing is defined.

Select equivalent: PRODUCT_PRICING.CURRENCY_CODE

Where equivalent:

Qualification: dimension

List of values: 0tr, editable, manual refresh, not exportable

Security access level: 0

Can be used: in result, in condition, in sort

Object status: show

Object: **Price Begin Date**
 Type: Date
 Description: This is the effective date for the pricing.
 Select equivalent: PRODUCT_PRICING.PRICE_BEGIN_DATE
 Where equivalent:

Qualification: dimension
 List of values: 0ts, editable, manual refresh, not exportable
 Security access level: 0
 Can be used: in result, in condition, in sort
 Object status: show

Object: **Price End Date**
 Type: Date
 Description: This is the effective end date for pricing.
 Select equivalent: PRODUCT_PRICING.PRICE_END_DATE
 Where equivalent:

Qualification: dimension
 List of values: 0tt, editable, manual refresh, not exportable
 Security access level: 0
 Can be used: in result, in condition, in sort
 Object status: show

Object: **Minimim Adjusted Price**
 Type: Number
 Description: Controls various aspects of the behavior of an order depending on the Short Pay value. This is the price that must be paid prior to the line item being considered active.

Select equivalent: PRODUCT_PRICING.MIN_PRICE
 Where equivalent:

Qualification: measure
 Aggregate function: Sum
 List of values: 0tu, editable, manual refresh, not exportable
 Security access level: 0
 Can be used: in result, in condition, in sort
 Object status: show

Object: **Maximum Price**
 Type: Number
 Description: Controls adjustable pricing and is ignored for other

short-pay codes. When the Short Pay code is ADJUST, the system adjusts up only to this price.

Select equivalent: PRODUCT_PRICING.MAX_PRICE
Where equivalent:

Qualification: measure
Aggregate function: Sum
List of values: 0tv, editable, manual refresh, not exportable
Security access level: 0
Can be used: in result, in condition, in sort
Object status: show

Object: **Maximum Auto Writeoff**
Type: Number
Description: Controls what amount is acceptable as a final price.
Select equivalent: PRODUCT_PRICING.WRITEOFF_TOLERANCE
Where equivalent:

Qualification: measure
Aggregate function: Sum
List of values: 0tw, editable, manual refresh, not exportable
Security access level: 0
Can be used: in result, in condition, in sort
Object status: show

Object: **Taxable Amount**
Type: Number
Description: Exists for products where only a portion of the product is taxable.
Select equivalent: PRODUCT_PRICING.TAXABLE_AMOUNT
Where equivalent:

Qualification: measure
Aggregate function: Sum
List of values: 0ty, editable, manual refresh, not exportable
Security access level: 0
Can be used: in result, in condition, in sort
Object status: show

Object: **Price**
Type: Number
Description: The price charged for the product prior to any applicable discounts.
Select equivalent: PRODUCT_PRICING.PRICE

Where equivalent:

Qualification: measure
 Aggregate function: Sum
 List of values: 0tx, editable, manual refresh, not exportable
 Security access level: 0
 Can be used: in result, in condition, in sort
 Object status: show

Object: **Adv Schedule Id**
 Type: Character
 Description: Identifies that this price will be based on a previous year's rate card, which is defined using an advertising rate schedule.
 Select equivalent: PRODUCT_PRICING.ADV_SCHEDULE_ID
 Where equivalent:

Qualification: dimension
 List of values: 0ua, editable, manual refresh, not exportable
 Security access level: 0
 Can be used: in result, in condition, in sort
 Object status: show

Object: **Adv Rate Card Begin Year Code**
 Type: Character
 Description:
 Select equivalent: PRODUCT_PRICING.ADV_RATE_CARD_BEGIN_YEAR_CODE
 Where equivalent:

Qualification: dimension
 List of values: 0ue, editable, manual refresh, not exportable
 Security access level: 0
 Can be used: in result, in condition, in sort
 Object status: show

Object: **Adv Rate Card End Year Code**
 Type: Character
 Description:
 Select equivalent: PRODUCT_PRICING.ADV_RATE_CARD_END_YEAR_CODE

Where equivalent:

Qualification: dimension
 List of values: 0uf, editable, manual refresh, not exportable
 Security access level: 0
 Can be used: in result, in condition, in sort
 Object status: show

Object: **Pct Fee Amount**
 Type: Number
 Description: If a flat amount is supposed to be charged in addition to an amount calculated using a percentage of the price of other products in the order, that flat amount is defined here. The Percent Calculation Method must be set to 'ADV_BASE_AND_PCT' in order to be able to define a flat amount fee.
 Select equivalent: PRODUCT_PRICING.PCT_FEE_AMOUNT
 Where equivalent:

Qualification: measure
 Aggregate function: Sum
 List of values: 0u8, editable, manual refresh, not exportable
 Security access level: 0
 Can be used: in result, in condition, in sort
 Object status: show

Object: **Pct Calculation Method Code**
 Type: Character
 Description: This field is only visible when the "Use Pct Fee Calculation" flag is checked on the Rate Code tab.
 Initially, the only two values for this field will be "ADV_PCT" and "ADV_BASE_AND_PCT". ADV_PCT means that the price charged w

will be an amount calculated using the percentage defined for the price. ADV_B ASE_AND_PCT means that the price charged will include a flat amount defined in PercentFeeAmount plus an amount calculated using the percentage defined for the price.

Select equivalent: PRODUCT_PRICING.PCT_CALCULATION_METHOD_CODE
Where equivalent:

Qualification: dimension
List of values: 0ub, editable, manual refresh, not exportable
Security access level: 0
Can be used: in result, in condition, in sort
Object status: show

Object: **Price Pct**
Type: Number
Description: The percentage that will be used to calculate the price of a percentage-fee product when it is added to an order.

Select equivalent: PRODUCT_PRICING.PRICE_PCT
Where equivalent:

Qualification: measure
Aggregate function: Sum
List of values: 0uc, editable, manual refresh, not exportable
Security access level: 0
Can be used: in result, in condition, in sort
Object status: show

Object: **Use Adv Schedule?**
Type: Character
Description: Identifies whether the price is using an advertising rate schedule. Note that a pricing record can be defined with both regular,

date-driven pricing and an
advertising rate schedule

Select equivalent: PRODUCT_PRICING.USE_ADV_SCHEDULE_FLAG
Where equivalent:

Qualification: dimension
List of values: 0u9, editable, manual refresh, not exportable
Security access level: 0
Can be used: in result, in condition, in sort
Object status: show

Object: **Use Adv Rate Card Pricing?**
Type: Character
Description:

Select equivalent: PRODUCT_PRICING.USE_ADV_RATE_CARD_PRICING_FLAG
Where equivalent:

Qualification: dimension
List of values: 0ud, editable, manual refresh, not exportable
Security access level: 0
Can be used: in result, in condition, in sort
Object status: show

Class:	Rate Cards Schedules
Description:	This class contains information about the rate cards and schedules.

Object: **ADV Schedule ID**
Type: Number
Description: This is a system generated number to identify an adv schedule.
Select equivalent: ADV_SCHEDULE.ADV_SCHEDULE_ID
Where equivalent:

Qualification: dimension
List of values: 0om, editable, manual refresh, not exportable
Security access level: 0
Can be used: in result, in condition, in sort
Object status: show

Object: **ADV Schedule Description**
Type: Character
Description: This is the adv schedule d
escription. Schedules will

be used in advertising to manage different pricing based on past-year rate cards. If the organization gives past-year rates to some advertisers, that will be managed by using a schedule that is similar in concept to the dues-basis schedule. Some advertisers negotiate with an organization to continue to get past-year rates; this is sometimes called "rate protection". Let's say an organization is currently charging \$1,000 for a full-page display ad if an advertiser commits to run 6 ads during the advertiser's contract period; last year, advertisers were charged \$900 for a full-page ad if the advertiser committed to run 6 ads during the advertiser's contract period. An advertiser who has been advertising with the organization for a number of years might negotiate to continue to be billed at last year's rate of \$900 per full-page ad if the advertiser agrees to purchase 6 ads during the contract period, rather than having to pay \$1,000 per ad.

Select equivalent:

ADV_SCHEDULE.DESCR

Where equivalent:

Qualification:

dimension

List of values:

Oop, editable, manual refresh, not exportable

Security access level:

0

Can be used:

in result, in condition, in sort

Object status:

show

Object: **ADV Schedule Type Code**
Type: Character
Description: This identifies the schedule type. It is currently a fixed code with 1 value i.e. CONTRACT_RATE_YEAR.
Select equivalent: ADV_SCHEDULE.SCHEDULE_TYPE_CODE
Where equivalent:

Qualification: dimension
List of values: 0on, editable, manual refresh, not exportable
Security access level: 0
Can be used: in result, in condition, in sort
Object status: show

Object: **ADV Schedule Type Description**
Type: Character
Description: This is the description of the adv schedule type.
Select equivalent:

Where equivalent:

Qualification: dimension
List of values: 0oo, editable, manual refresh, not exportable
Security access level: 0
Can be used: in result, in condition, in sort
Object status: show

Object: **Is Schedule Active?**
Type: Character
Description: This indicates if the ADV schedule is active.
Select equivalent: ADV_SCHEDULE.ACTIVE_FLAG
Where equivalent:

Qualification: dimension
List of values: 0oq, editable, manual refresh, not exportable
Security access level: 0
Can be used: in result, in condition, in sort
Object status: show

Class: Rate Schedule Details Description: This class contains details about the rate card.
--

Object: **Rate Card Year Code**
Type: Character
Description: The Year of the rate card.
 The rate card year is compared against the advertiser's contract rate year to determine the price.
Select equivalent: ADV_SCHEDULE_DETAIL_YEAR.RATE_CARD_YEAR_CODE
Where equivalent:

Qualification: dimension
List of values: 0or, editable, manual refresh, not exportable
Security access level: 0
Can be used: in result, in condition, in sort
Object status: show

Object: **Rate Card Year Description**
Type: Character
Description: This is the description of the rate card year.
Select equivalent: APP_CODE_RATE_CARD_YEAR.DESCR
Where equivalent:

Qualification: dimension
List of values: 0os, editable, manual refresh, not exportable
Security access level: 0
Can be used: in result, in condition, in sort
Object status: show

Object: **Rate Structure**
Type: Character
Description: This is the rate structure associated with the rate card.
Select equivalent: ADV_SCHEDULE_DETAIL_YEAR.RATE_STRUCTURE
Where equivalent:

Qualification: dimension
List of values: 0p0, editable, manual refresh, not exportable
Security access level: 0
Can be used: in result, in condition, in sort
Object status: show

Object: **Rate Structure Description**
Type: Character
Description: This is the description of the rate structure associated with the rate card.

Select equivalent: RATE_STRUCTURE.DESCR
Where equivalent:

Qualification: dimension
List of values: 0p1, editable, manual refresh, not exportable
Security access level: 0
Can be used: in result, in condition, in sort
Object status: show

Object: **Rate Code**
Type: Character
Description: This is the rate code associated with the rate card.
Select equivalent: ADV_SCHEDULE_DETAIL_YEAR.RATE_CODE
Where equivalent:

Qualification: dimension
List of values: 0ot, editable, manual refresh, not exportable
Security access level: 0
Can be used: in result, in condition, in sort
Object status: show

Object: **Rate Code Description**
Type: Character
Description: This is the description of the rate code associated with the rate card.
Select equivalent: APP_CODE_RATE.DESCR
Where equivalent:

Qualification: dimension
List of values: 0ow, editable, manual refresh, not exportable
Security access level: 0
Can be used: in result, in condition, in sort
Object status: show

Object: **Currency Code**
Type: Character
Description: This is the currency code of the price.
Select equivalent: ADV_SCHEDULE_DETAIL_YEAR.CURRENCY_CODE
Where equivalent:

Qualification: dimension
List of values: 0ou, editable, manual refresh, not exportable
Security access level: 0
Can be used: in result, in condition, in sort

Object status: show

Object: **Price**
 Type: Number
 Description: This is the price on the rate card.
 Select equivalent: ADV_SCHEDULE_DETAIL_YEAR.PRICE
 Where equivalent:

Qualification: dimension
 List of values: 0ox, editable, manual refresh, not exportable
 Security access level: 0
 Can be used: in result, in condition, in sort
 Object status: show

Object: **Taxable Amount**
 Type: Number
 Description: This is the taxable amount on the rate card.
 Select equivalent: ADV_SCHEDULE_DETAIL_YEAR.TAXABLE_AMOUNT
 Where equivalent:

Qualification: dimension
 List of values: 0oy, editable, manual refresh, not exportable
 Security access level: 0
 Can be used: in result, in condition, in sort
 Object status: show

Class:	Cancellation Fee Schedules
Description:	

Object: **Cancellation Fee Schedule ID**
 Type: Number
 Description: This is a system generated number that uniquely identifies a cancellation fee schedule
 Select equivalent: Product_Cancel_Fee_Schedule.SCHEDULE_ID
 Where equivalent:

Qualification: dimension
 List of values: 0qq, editable, manual refresh, not exportable
 Security access level: 0
 Can be used: in result, in condition, in sort
 Object status: show

Object: **Cancellation Fee Schedule Description**

Type: Character
 Description: This is the description of the cancellation fee schedule.
 Select equivalent: Product_Cancel_Fee_Schedule.DESCR
 Where equivalent:

Qualification: dimension
 List of values: 0qh, editable, manual refresh, not exportable
 Security access level: 0
 Can be used: in result, in condition, in sort
 Object status: show

Object: **Cancellation Fee Basis Code**

Type: Character
 Description: This code is used to define a basis based on which the cancellation fees will be charged. E.g. Ad issue date, web Ad start date etc.. For Ad issue date the cancellation fees will be calculated based on the number of days/month after the issue date when the ad was cancelled.
 Select equivalent: Product_Cancel_Fee_Schedule.CANCEL_FEE_BASIS_CODE
 Where equivalent:

Qualification: dimension
 List of values: 0qi, editable, manual refresh, not exportable
 Security access level: 0
 Can be used: in result, in condition, in sort
 Object status: show

Object: **Cancellation Fee Basis Description**

Type: Character
 Description: This is the description of the cancellation fee basis.
 Select equivalent:

Where equivalent:

Qualification: dimension
 List of values: 0qj, editable, manual refresh, not exportable
 Security access level: 0
 Can be used: in result, in condition, in sort

Object status: show

Object: **Cancellation Fee Basis Unit Code**
 Type: Character
 Description: This is the cancellation fee basis unit code. The possible values are 'Day', 'Month'.
 Select equivalent: Product_Cancel_Fee_Schedule.CANCEL_FEE_BASIS_UNIT_CODE
 Where equivalent:

Qualification: dimension
 List of values: 0qk, editable, manual refresh, not exportable
 Security access level: 0
 Can be used: in result, in condition, in sort
 Object status: show

Object: **Cancellation Fee Basis Unit Description**
 Type: Character
 Description: This is the description of the cancellation fee basis unit.
 Select equivalent:

Where equivalent:

Qualification: dimension
 List of values: 0ql, editable, manual refresh, not exportable
 Security access level: 0
 Can be used: in result, in condition, in sort
 Object status: show

Object: **Is Schedule Active?**
 Type: Character
 Description: This indicates if the schedule is Active.
 Select equivalent: Product_Cancel_Fee_Schedule.ACTIVE_FLAG
 Where equivalent:

Qualification: dimension
 List of values: 0qm, editable, manual refresh, not exportable
 Security access level: 0
 Can be used: in result, in condition, in sort
 Object status: show

Class:	Cancellation Fee Schedule Detail
Description:	

Object: **Minimum Units from Basis Date**
Type: Character
Description: This is the minimum days/
month from the basis date
i.e. ad issue date if the
ADV order is cancelled the
n the
Select equivalent: Product_Cancel_Fee_Schedule_Detail.MIN_UNITS_FROM_BASIS_DATE
Where equivalent:

Qualification: dimension
List of values: 0qo, editable, manual refresh, not exportable
Security access level: 0
Can be used: in result, in condition, in sort
Object status: show

Object: **Maximum Units from Basis Date**
Type: Character
Description:

Select equivalent: Product_Cancel_Fee_Schedule_Detail.MAX_UNITS_TO_BASIS_DATE
Where equivalent:

Qualification: dimension
List of values: 0qp, editable, manual refresh, not exportable
Security access level: 0
Can be used: in result, in condition, in sort
Object status: show

Object: **Cancellation Amount**
Type: Number
Description:

Select equivalent: Product_Cancel_Fee_Schedule_Detail.CANCEL_AMOUNT
Where equivalent:

Qualification: dimension
List of values: 0qq, editable, manual refresh, not exportable
Security access level: 0
Can be used: in result, in condition, in sort
Object status: show

Object: **Cancellation Percentage**

Type: Number
 Description:
 Select equivalent: Product_Cancel_Fee_Schedule_Detail.CANCEL_PCT
 Where equivalent:
 Qualification: dimension
 List of values: 0qr, editable, manual refresh, not exportable
 Security access level: 0
 Can be used: in result, in condition, in sort
 Object status: show

Class:	Advertising Product Defaults
Description:	This class contains information about Organization Advertising product control. It defines the advertising product types for the organization and defaults related to them.

Object: **Product Type**
 Type: Character
 Description: This is the product type code of the advertising product. E.g. Benefit, Classified, Insert, Print_Display, Web_Display etc.. The product type defaults are defined at the Organization level.
 Select equivalent: APP_ORG_UNIT_ADV_PROD_DEFAULTS.PRODUCT_TYPE_CODE
 Where equivalent:
 Qualification: dimension
 List of values: 003, editable, manual refresh, not exportable
 Security access level: 0
 Can be used: in result, in condition, in sort
 Object status: show

Object: **Print Ad?**
 Type: Character
 Description: This indicates if the default product type can be a Print Ad.
 Select equivalent: APP_ORG_UNIT_ADV_PROD_DEFAULTS.PRINT_AD_FLAG
 Where equivalent:

Qualification: dimension
 List of values: 004, editable, manual refresh, not exportable
 Security access level: 0
 Can be used: in result, in condition, in sort
 Object status: show

Object: **Renewable?**
 Type: Character
 Description: This indicates if the default product type is renewable.
 Select equivalent: APP_ORG_UNIT_ADV_PROD_DEFAULTS.DEFAULT_RENEWABLE_FLAG
 Where equivalent:

Qualification: dimension
 List of values: 00a, editable, manual refresh, not exportable
 Security access level: 0
 Can be used: in result, in condition, in sort
 Object status: show

Object: **Web Ad?**
 Type: Character
 Description: This indicates if the default product type can be a Web Ad.
 Select equivalent: APP_ORG_UNIT_ADV_PROD_DEFAULTS.WEB_AD_FLAG
 Where equivalent:

Qualification: dimension
 List of values: 005, editable, manual refresh, not exportable
 Security access level: 0
 Can be used: in result, in condition, in sort
 Object status: show

Object: **Default Require Contract?**
 Type: Character
 Description: This indicates if the default product type requires a contract.
 Select equivalent: APP_ORG_UNIT_ADV_PROD_DEFAULTS.DEFAULT_REQUIRES_CONTRACT_FLAG
 Where equivalent:

Qualification: dimension
 List of values: 006, editable, manual refresh, not exportable
 Security access level: 0
 Can be used: in result, in condition, in sort
 Object status: show

Object: **Default fulfill frequency?**
Type: Character
Description: This defines the default fulfill frequency for the default product type.
Select equivalent: APP_ORG_UNIT_ADV_PROD_DEFAULTS.DEFAULT_FULFILLS_FREQ_FLAG
Where equivalent:

Qualification: dimension
List of values: 007, editable, manual refresh, not exportable
Security access level: 0
Can be used: in result, in condition, in sort
Object status: show

Object: **Eligible for sales commission?**
Type: Character
Description: This indicates if the default product type is eligible for sales commission.
Select equivalent: APP_ORG_UNIT_ADV_PROD_DEFAULTS.DEFAULT_ELIG_FOR_COMM_FLAG
Where equivalent:

Qualification: dimension
List of values: 009, editable, manual refresh, not exportable
Security access level: 0
Can be used: in result, in condition, in sort
Object status: show

Object: **Include in Percentage Surcharge Fee Calculation?**
Type: Character
Description: This indicates if the default product type can be included in percentage surcharge fee calculation.
Select equivalent: APP_ORG_UNIT_ADV_PROD_DEFAULTS.DEFAULT_INCL_IN_PCT_FEE_FLAG
Where equivalent:

Qualification: dimension
List of values: 008, editable, manual refresh, not exportable
Security access level: 0
Can be used: in result, in condition, in sort
Object status: show

Object: **Include in Page Plan?**
Type: Character
Description: This indicates if the default product type can be included in the page plan.

Select equivalent: APP_ORG_UNIT_ADV_PROD_DEFAULTS.DEFAULT_INCL_IN_PG_PLAN_FLAG
Where equivalent:

Qualification: dimension
List of values: 00b, editable, manual refresh, not exportable
Security access level: 0
Can be used: in result, in condition, in sort
Object status: show

Class:	Advertising Parameters
Description:	This class contains information about advertising parameters.

Object: **Default Advertising Agency Discount Percentage**
Type: Number
Description: This is the Ad agency discount percentage defined at the Org unit level. This can be overridden at the Advertising product level.

Select equivalent: APP_ORG_UNIT.DEFAULT_ADV_AGENCY_DISC_PCT
Where equivalent:

Qualification: dimension
List of values: 00c, editable, manual refresh, not exportable
Security access level: 0
Can be used: in result, in condition, in sort
Object status: show

Class:	Media Conditions
Description:	

No objects

Class:	Ad Type Conditions
Description:	

No objects

Class:	Ad Size Conditions
Description:	

No objects

Class: **Ad Color and Webmedia Conditions**
Description:

No objects

Class: **Ad Premium Position Conditions**
Description:

No objects

Class: **Product Conditions**
Description:

No objects

Condition List

No Conditions

Conditions

Class: **Media Conditions**
Description:

Active Media

Description:
Where Equivalent:ADV_MEDIA.ACTIVE_FLAG = 'Y'

Media Requiring Contract

Description:
Where Equivalent:ADV_MEDIA.REQUIRES_CONTRACT_FLAG = 'Y'

Media Not Requiring a Contract

Description:
Where Equivalent:ADV_MEDIA.REQUIRES_CONTRACT_FLAG = 'N'

Media with Ad Space Closed

Description:
Where Equivalent:ADV_MEDIA.AD_SPACE_CLOSE_DATE < Getdate()

Media with Ad Space Open

Description:

Where Equivalent:ADV_MEDIA.AD_SPACE_CLOSE_DATE > Getdate() or ADV_MEDIA.AD_SPACE_CLOSE_DATE is Null

Media with Art Due Date in Future

Description:

Where Equivalent:ADV_MEDIA.ART_DUE_DATE > Getdate() or ADV_MEDIA.ART_DUE_DATE is Null

Media with Digital File due date in Future

Description:

Where Equivalent:ADV_MEDIA.DIGITAL_FILE_DUE_DATE > getdate() or ADV_MEDIA.DIGITAL_FILE_DUE_DATE is Null

Media with Copy Due date in Future

Description:

Where Equivalent:ADV_MEDIA.COPY_DUE_DATE > Getdate() or ADV_MEDIA.COPY_DUE_DATE is Null

Media with Camera Ready Due Date in Future

Description:

Where Equivalent:ADV_MEDIA.CAMERA_READY_DUE_DATE > Getdate() or ADV_MEDIA.CAMERA_READY_DUE_DATE is Null

Only Internet Media

Description:

Where Equivalent:ADV_MEDIA.INTERNET_MEDIA_FLAG = 'Y'

Class:

Ad Type Conditions

Description:

Ad Type Enabled for Print Products

Description:

Where Equivalent:ADV_AD_TYPE.ENABLE_FOR_PRINT_PRODUCT_FLAG = 'Y'

Ad Type Enabled for Web Product

Description:

Where Equivalent:ADV_AD_TYPE.ENABLE_FOR_WEB_PRODUCT_FLAG = 'Y'

Ad Type Enabled for All Products

Description:

Where Equivalent:ADV_AD_TYPE.ENABLE_FOR_ALL_PRODUCTS_FLAG = 'Y'

Class:

Ad Size Conditions

Description:

Is Ad Size Active?

Description:

Where Equivalent:ADV_AD_SIZE.ACTIVE_FLAG

Ad Size Enabled for Print Products

Description:

Where Equivalent:ADV_AD_SIZE.ENABLE_FOR_PRINT_PRODUCT_FLAG = 'Y'

Ad Size Enabled for Web Product

Description:

Where Equivalent:ADV_AD_SIZE.ENABLE_FOR_WEB_PRODUCT_FLAG = 'Y'

Ad Size Enabled for All Products

Description:

Where Equivalent:ADV_AD_SIZE.ENABLE_FOR_ALL_PRODUCTS_FLAG = 'Y'

Class:

Ad Color and Webmedia Conditions

Description:

Is Ad Color and Webmedia Active?

Description:

Where Equivalent:ADV_AD_COLOR_WEBMEDIA.ACTIVE_FLAG

Ad Color and Webmedia Enabled for Print Products

Description:

Where Equivalent:ADV_AD_COLOR_WEBMEDIA.ENABLE_FOR_PRINT_PRODUCT_FLAG

Ad Color and Webmedia Enabled for Web Product

Description:

Where Equivalent:ADV_AD_COLOR_WEBMEDIA.ENABLE_FOR_WEB_PRODUCT_FLAG

Ad Color and Webmedia Enabled for All Products

Description:

Where Equivalent:ADV_AD_COLOR_WEBMEDIA.ENABLE_FOR_ALL_PRODUCTS_FLAG

Class:

Ad Premium Position Conditions

Description:

Is Ad Premium Position Active?

Description:

Where Equivalent:ADV_PREMIUM_POSITION.ACTIVE_FLAG

Ad Color and Webmedia Enabled for Print Products

Description:

Where Equivalent:ADV_PREMIUM_POSITION.ENABLE_FOR_PRINT_PRODUCT_FLAG

Ad Color and Webmedia Enabled for Web Product

Description:

Where Equivalent:ADV_PREMIUM_POSITION.ENABLE_FOR_WEB_PRODUCT_FLAG

Ad Color and Webmedia Enabled for All Products

Description:

Where Equivalent:ADV_PREMIUM_POSITION.ENABLE_FOR_ALL_PRODUCTS_FLAG

Class:

Product Conditions

Description:

Requires Contract

Description:

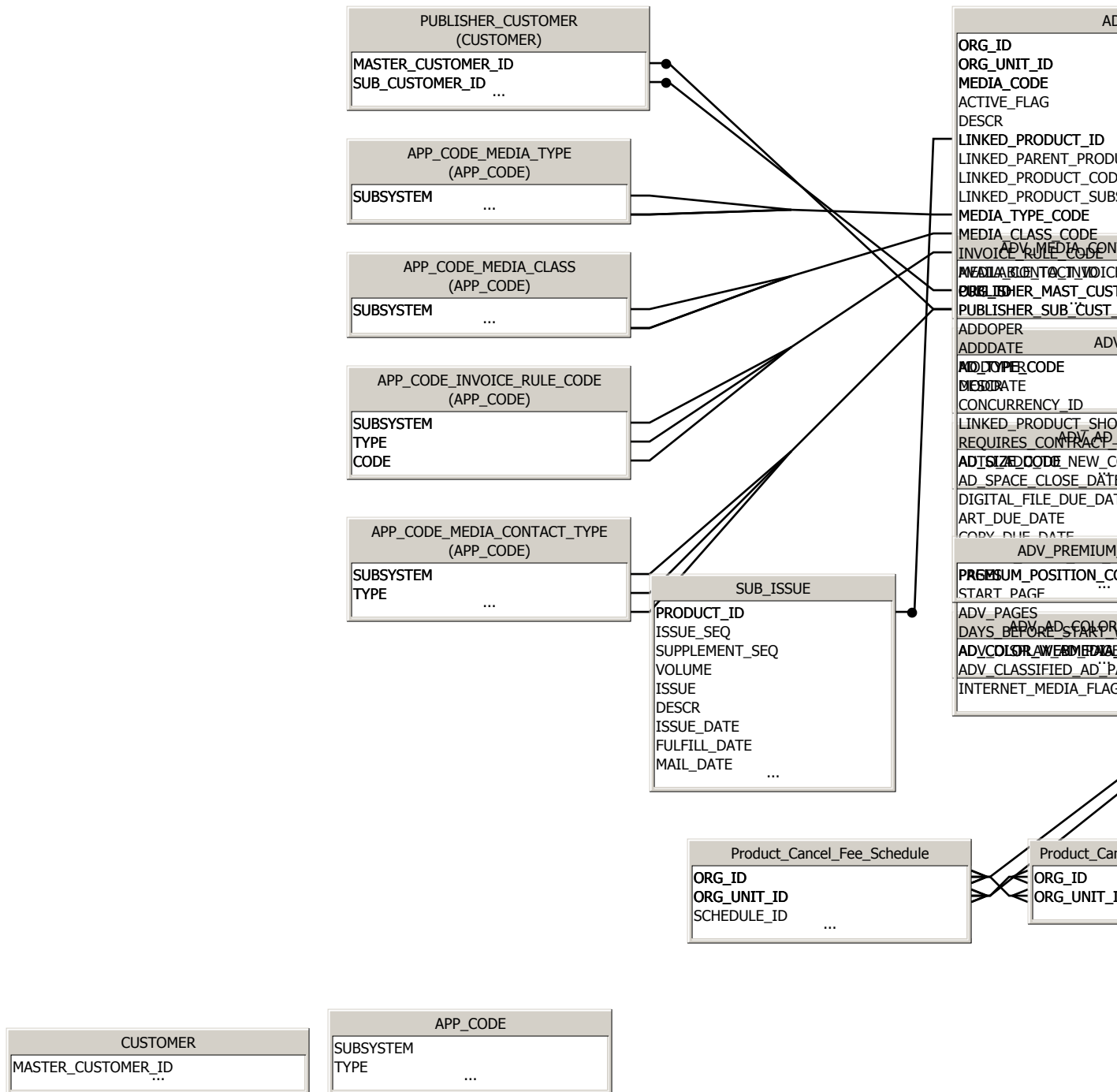
Where Equivalent:ADV_PRODUCT.REQUIRES_CONTRACT_FLAG = 'Y'

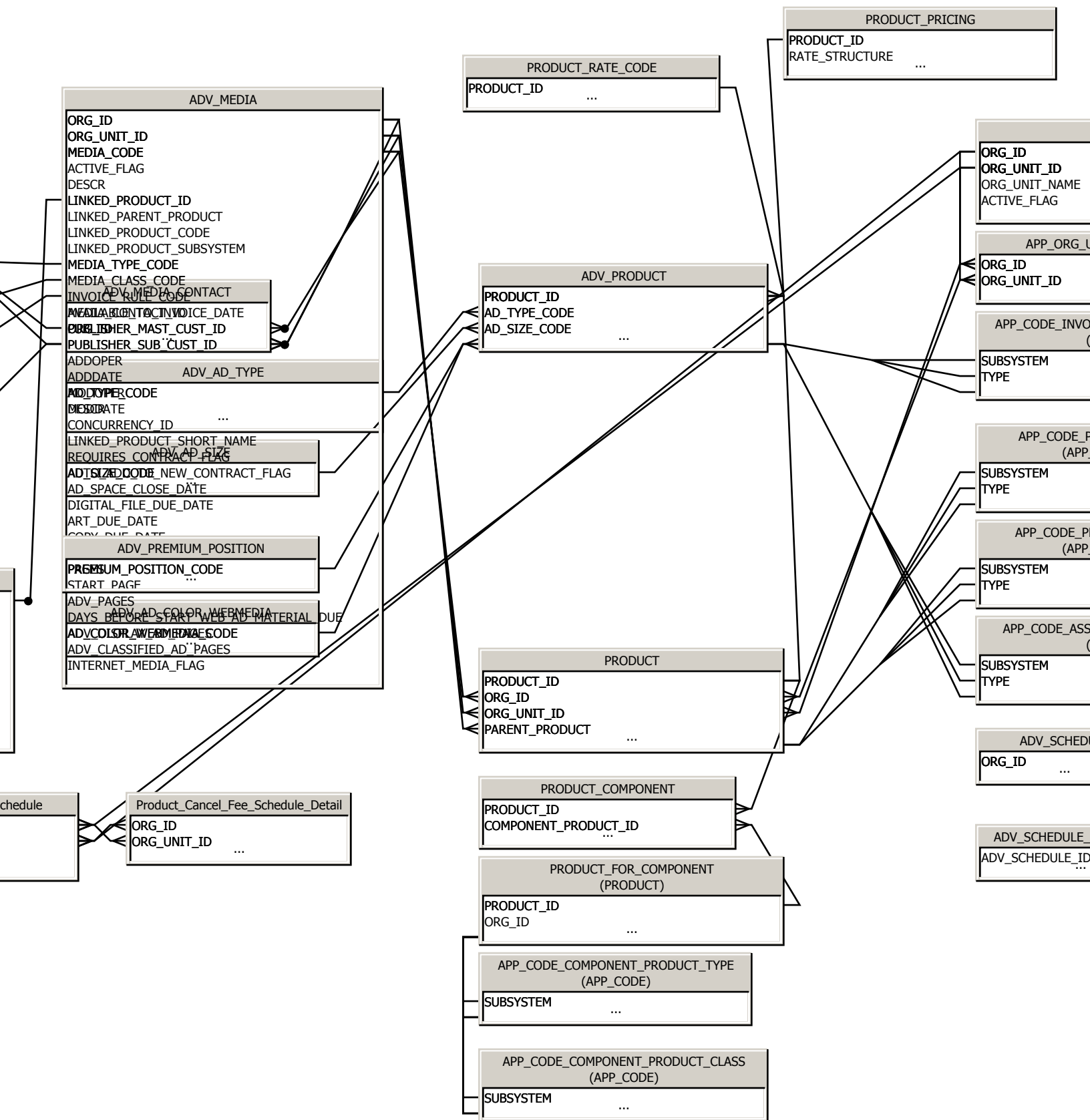
Hierarchies List

No Hierarchies

Hierarchies

No Hierarchies





PRODUCT_PRICING
E ...

