

## Universe Parameters

### Definition

Name: *Simple Memberships*

Description:

Connection: *PersonifyQA*

### General information

Created: *6/25/2009 by Administrator*

Modified: *6/25/2009 by Administrator*

Comments:

Statistics: *18 Classes*  
*103 Objects*  
*23 Tables*  
*20 Aliases*  
*37 Joins*  
*0 Contexts*  
*5 Hierarchies*  
*28 Conditions*

### Strategies

Join strategy: *Edit Manually (none)*

Table strategy: *(Built-in) Standard*

Object strategy: *(Built-in) Standard Renaming*

### Controls

Limit size of result set to: *unchecked*

Limit size of long text objects to: *1000 characters*

Limit execution time to: *10 minutes*

Warn if cost estimate exceeds: *unchecked*

### SQL parameters

Query

Allow use of subqueries: *yes*

Allow use of union, intersect and minus operators: *yes*

Allow complex conditions in Query Panel: *yes*

Cartesian products: *warn*

Multiple paths

Generate several SQL statements for each context: *yes*

Generate several SQL statements for each measure: *yes*

Allow selection of multiple contexts: *no*

### Links

---

No links for this universe

## Object List

No classes

## Condition List

No Conditions

## Hierarchies List

Ship Address  
Bill Address  
Orders Rate Structure  
Product Info  
Member Product Codes

## Tables List

APP\_CODE  
APP\_ORG\_UNIT  
ASSOCIATE\_CUSTOMER  
ASSOCIATE\_CUS\_ADDRESS\_VW  
BILL\_CUSTOMER  
BILL\_CUS\_ADDRESS  
BILL\_CUS\_ADDRESS\_DETAIL  
BILL\_CUS\_CURRENT\_MEMBERSHIP\_INFO  
CUSTOMER  
CUS\_ADDRESS  
CUS\_ADDRESS\_DETAIL  
CUS\_ADDRESS\_VW  
CUS\_BASIS\_HISTORY  
CUS\_CURRENT\_MEMBERSHIP\_INFO  
CUS\_DEMOGRAPHIC  
CUS\_DEMOGRAPHIC\_CODE\_DESCR\_VW  
CUS\_FACILITY\_PRIMARY\_INFO\_VW  
CUS\_PRIMARY\_INFO\_VW  
CUS\_SPECIALTY  
Cus\_Relationship\_Bill\_Related\_Cus\_Info\_VW  
Cus\_Relationship\_Bill\_Subsiary\_Info\_VW  
Cus\_Relationship\_Related\_Cus\_Info\_VW  
Cus\_Relationship\_Ship\_Related\_Cus\_Info\_VW  
FAR\_TXN  
MBR\_GROUP  
MBR\_GROUP\_DETAIL

MBR\_PRODUCT  
ORDER\_DETAIL  
ORDER\_MASTER  
ORDER\_MBR\_ASSOCIATE  
PRIMARY\_EMPLOYER\_CUS\_CURRENT\_MEMBERSHIP\_INFO  
PRODUCT  
PRODUCT\_CLASS\_APP\_CODE  
PRODUCT\_RATE\_CODE  
PRODUCT\_TYPE\_APP\_CODE  
SHIP\_CUSTOMER  
SHIP\_CUS\_ADDRESS  
SHIP\_CUS\_ADDRESS\_DETAIL  
SHIP\_CUS\_CURRENT\_MEMBERSHIP\_INFO  
SHIP\_CUS\_DEMOGRAPHIC\_CODE\_DESCR\_VW  
SHIP\_CUS\_PRIMARY\_EMPLOYMENT  
SHIP\_CUS\_SPECIALTY  
SUBGROUP\_CUSTOMER

## Join List

Join0: ORDER\_MASTER.ORDER\_NO=ORDER\_DETAIL.ORDER\_NO

Join1: ORDER\_MASTER.BILL\_MASTER\_CUSTOMER\_ID=BILL\_CUSTOMER.MASTER\_CUSTOMER\_ID and ORDER\_MASTER.BILL\_SUB\_CUSTOMER\_ID=BILL\_CUSTOMER.SUB\_CUSTOMER\_ID

Join2: ORDER\_MASTER.BILL\_MASTER\_CUSTOMER\_ID=BILL\_CUS\_CURRENT\_MEMBERSHIP\_INFO.MASTER\_CUSTOMER\_ID and ORDER\_MASTER.BILL\_SUB\_CUSTOMER\_ID=BILL\_CUS\_CURRENT\_MEMBERSHIP\_INFO.SUB\_CUSTOMER\_ID

Join3: BILL\_CUS\_ADDRESS.MASTER\_CUSTOMER\_ID=ORDER\_MASTER.BILL\_MASTER\_CUSTOMER\_ID and BILL\_CUS\_ADDRESS.SUB\_CUSTOMER\_ID=ORDER\_MASTER.BILL\_SUB\_CUSTOMER\_ID

Join4: BILL\_CUS\_ADDRESS\_DETAIL.MASTER\_CUSTOMER\_ID=ORDER\_MASTER.BILL\_MASTER\_CUSTOMER\_ID and BILL\_CUS\_ADDRESS\_DETAIL.SUB\_CUSTOMER\_ID=ORDER\_MASTER.BILL\_SUB\_CUSTOMER\_ID and

- 
- BILL\_CUS\_ADDRESS\_DETAIL.CUS\_ADDRE  
SS\_ID=ORDER\_MASTER.BILL\_ADDRESS\_  
ID and BILL\_CUS\_ADDRESS\_DETAIL.AD  
DRESS\_TYPE\_CODE=ORDER\_MASTER.BIL  
L\_ADDRESS\_TYPE\_CODE
- Join5: APP\_ORG\_UNIT.ORG\_ID=ORDER\_DETAIL  
.ORG\_ID and APP\_ORG\_UNIT.ORG\_UNIT  
\_ID=ORDER\_DETAIL.ORG\_UNIT\_ID
- Join6: SHIP\_CUS\_CURRENT\_MEMBERSHIP\_INFO  
.MASTER\_CUSTOMER\_ID=ORDER\_DETAIL  
.SHIP\_MASTER\_CUSTOMER\_ID and SHIP  
\_CUS\_CURRENT\_MEMBERSHIP\_INFO.SUB  
\_CUSTOMER\_ID=ORDER\_DETAIL.SHIP\_S  
UB\_CUSTOMER\_ID
- Join7: SHIP\_CUS\_ADDRESS.CUS\_ADDRESS\_ID=ORDER\_DETAIL.SHIP\_ADDRESS\_ID
- Join8: SHIP\_CUS\_ADDRESS\_DETAIL.MASTER\_C  
USTOMER\_ID=ORDER\_DETAIL.SHIP\_MAS  
TER\_CUSTOMER\_ID and SHIP\_CUS\_ADD  
RESS\_DETAIL.SUB\_CUSTOMER\_ID=ORDE  
R\_DETAIL.SHIP\_SUB\_CUSTOMER\_ID and  
SHIP\_CUS\_ADDRESS\_DETAIL.CUS\_ADDR  
ESS\_ID=ORDER\_DETAIL.SHIP\_ADDRESS  
\_ID and SHIP\_CUS\_ADDRESS\_DETAIL.A  
DDRESS\_TYPE\_CODE=ORDER\_DETAIL.SH  
IP\_ADDRESS\_TYPE\_CODE
- Join9: ORDER\_DETAIL.PRODUCT\_ID=PRODUCT.PRODUCT\_ID
- Join10: PRODUCT\_TYPE\_APP\_CODE.TYPE = 'PRODUCT\_TYPE'  
AND PRODUCT\_TYPE\_APP\_CODE.SUBSYSTEM = 'MBR'
- Join11: PRODUCT\_CLASS\_APP\_CODE.TYPE = 'PRODUCT\_CLASS'  
AND PRODUCT\_CLASS\_APP\_CODE.SUBSYSTEM = 'MBR'
- Join12: PRODUCT\_TYPE\_APP\_CODE.CODE=PRODUCT.PRODUCT\_TYPE\_CODE
- Join13: PRODUCT\_CLASS\_APP\_CODE.CODE=PRODUCT.PRODUCT\_CLASS\_CODE
- Join14: ORDER\_DETAIL.ORDER\_NO=FAR\_TXN.OR  
DER\_NO and ORDER\_DETAIL.ORDER\_LIN  
E\_NO=FAR\_TXN.ORDER\_LINE\_NO
-

- 
- Join15: SHIP\_CUSTOMER.MASTER\_CUSTOMER\_ID =SHIP\_CUS\_PRIMARY\_EMPLOYMENT.MASTER\_CUSTOMER\_ID and SHIP\_CUSTOMER.SUB\_CUSTOMER\_ID=SHIP\_CUS\_PRIMARY\_EMPLOYMENT.SUB\_CUSTOMER\_ID and SHIP\_CUS\_PRIMARY\_EMPLOYMENT.RELATIONSHIP\_TYPE= 'EMPLOYMENT' AND SHIP\_CUS\_PRIMARY\_EMPLOYMENT.RECIPROCAL\_CODE='EMPLOYER' and SHIP\_CUS\_PRIMARY\_EMPLOYMENT.PRIMARY\_EMPLOYER\_FLAG='Y'
- Join16: ORDER\_DETAIL.ORDER\_NO=ORDER\_MBR\_ASSOCIATE.ORDER\_NO and ORDER\_DETAIL.ORDER\_LINE\_NO=ORDER\_MBR\_ASSOCIATE.ORDER\_LINE\_NO
- Join17: ASSOCIATE\_CUSTOMER.MASTER\_CUSTOMER\_ID=ORDER\_MBR\_ASSOCIATE.MASTER\_CUSTOMER\_ID and ASSOCIATE\_CUSTOMER.SUB\_CUSTOMER\_ID=ORDER\_MBR\_ASSOCIATE.SUB\_CUSTOMER\_ID
- Join18: MBR\_GROUP\_DETAIL.ORG\_ID=MBR\_GROUP.ORG\_ID and MBR\_GROUP\_DETAIL.ORG\_UNIT\_ID=MBR\_GROUP.ORG\_UNIT\_ID and MBR\_GROUP\_DETAIL.MEMBER\_GROUP=MBR\_GROUP.MEMBER\_GROUP
- Join19: ORDER\_DETAIL.PRODUCT\_ID=MBR\_PRODUCT.PRODUCT\_ID and ORDER\_DETAIL.ORG\_ID=MBR\_PRODUCT.ORG\_ID and ORDER\_DETAIL.ORG\_UNIT\_ID=MBR\_PRODUCT.ORG\_UNIT\_ID
- Join20: SHIP\_CUSTOMER.MASTER\_CUSTOMER\_ID =SHIP\_CUS\_SPECIALTY.MASTER\_CUSTOMER\_ID and SHIP\_CUSTOMER.SUB\_CUSTOMER\_ID=SHIP\_CUS\_SPECIALTY.SUB\_CUSTOMER\_ID
- Join21: MBR\_PRODUCT.SUBGROUP\_MAST\_CUST=SUBGROUP\_CUSTOMER.MASTER\_CUSTOMER\_ID and MBR\_PRODUCT.SUBGROUP\_SUB\_CUST=SUBGROUP\_CUSTOMER.SUB\_CUSTOMER\_ID
-

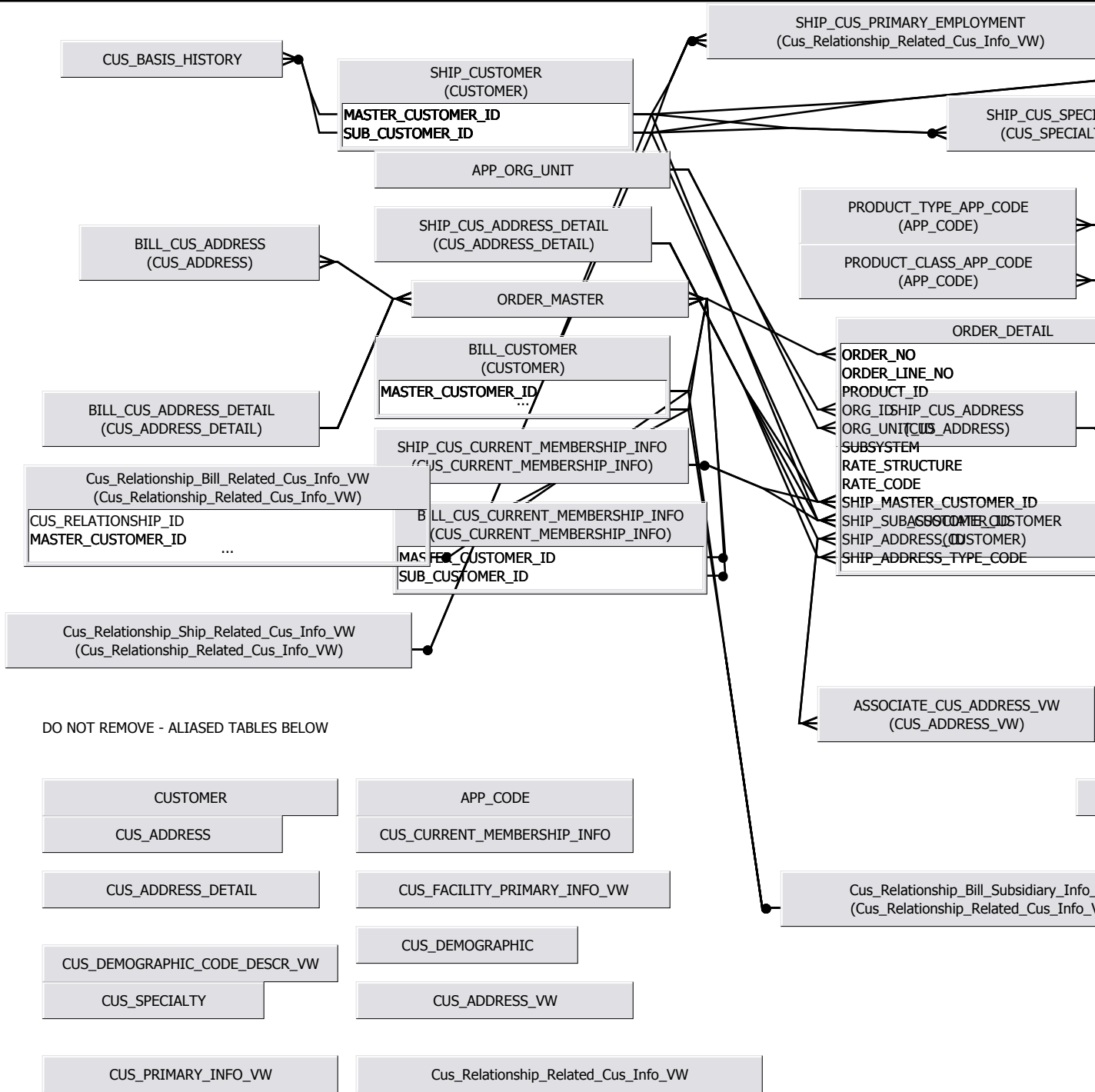
- 
- Join22: ASSOCIATE\_CUS\_ADDRESS\_VW.MASTER\_CUSTOMER\_ID=ASSOCIATE\_CUSTOMER.MASTER\_CUSTOMER\_ID and ASSOCIATE\_CUS\_ADDRESS\_VW.SUB\_CUSTOMER\_ID=ASSOCIATE\_CUSTOMER.SUB\_CUSTOMER\_ID
- Join23: ASSOCIATE\_CUS\_ADDRESS\_VW.PRIORITY\_SEQ = 0
- Join24: SHIP\_CUSTOMER.MASTER\_CUSTOMER\_ID=SHIP\_CUS\_DEMOGRAPHIC\_CODE\_DESCR\_VW.MASTER\_CUSTOMER\_ID and SHIP\_CUSTOMER.SUB\_CUSTOMER\_ID=SHIP\_CUS\_DEMOGRAPHIC\_CODE\_DESCR\_VW.SUB\_CUSTOMER\_ID
- Join25: ORDER\_DETAIL.SUBSYSTEM = 'MBR'
- Join26: SHIP\_CUSTOMER.MASTER\_CUSTOMER\_ID=ORDER\_DETAIL.SHIP\_MASTER\_CUSTOMER\_ID and SHIP\_CUSTOMER.SUB\_CUSTOMER\_ID=ORDER\_DETAIL.SHIP\_SUB\_CUSTOMER\_ID
- Join27: ORDER\_DETAIL.PRODUCT\_ID=PRODUCT\_RATE\_CODE.PRODUCT\_ID and ORDER\_DETAIL.RATE\_STRUCTURE=PRODUCT\_RATE\_CODE.RATE\_STRUCTURE and ORDER\_DETAIL.RATE\_CODE=PRODUCT\_RATE\_CODE.RATE\_CODE
- Join28: ORDER\_DETAIL.ORG\_ID = dbo.usrBOOrg(@Variable('BOUSER'))  
AND ORDER\_DETAIL.ORG\_UNIT\_ID = dbo.usrBOOrgUnit(@Variable('BOUSER'))
- Join29: ORDER\_MASTER.ORG\_ID = dbo.usrBOOrg(@Variable('BOUSER'))  
AND ORDER\_MASTER.ORG\_UNIT\_ID =dbo.usrBOOrgUnit(@Variable('BOUSER'))
- Join30: PRODUCT.ORG\_ID = dbo.usrBOOrg(@Variable('BOUSER'))  
AND PRODUCT.ORG\_UNIT\_ID = dbo.usrBOOrgUnit(@Variable('BOUSER'))
- Join31: CUS\_BASIS\_HISTORY.MASTER\_CUSTOMER\_ID=SHIP\_CUSTOMER.MASTER\_CUSTOMER\_ID and CUS\_BASIS\_HISTORY.SUB\_CUSTOMER\_ID=SHIP\_CUSTOMER.SUB\_CUSTOMER\_ID
-

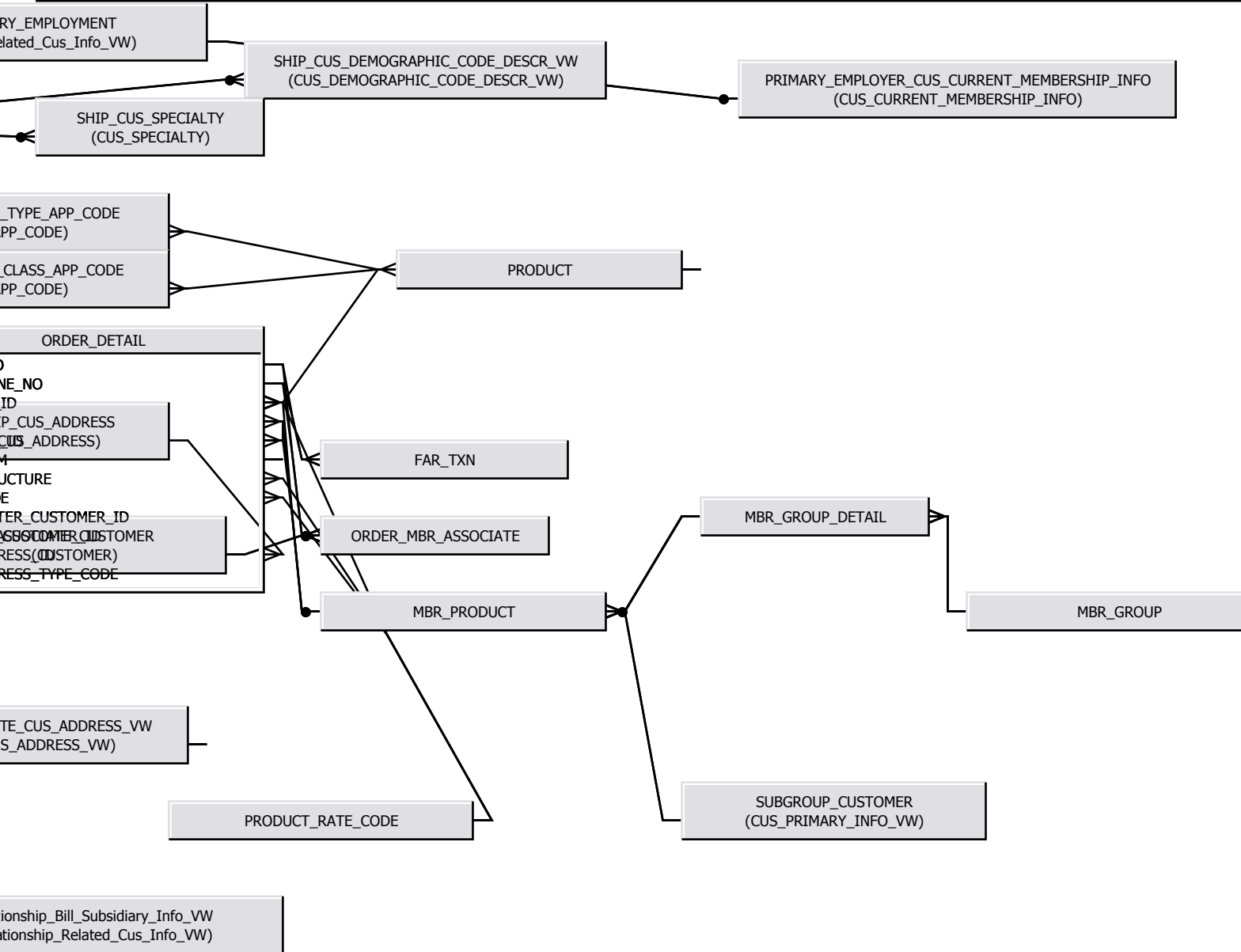
- 
- Join32: SHIP\_CUS\_PRIMARY\_EMPLOYMENT.RELATED\_MASTER\_CUSTOMER\_ID=PRIMARY\_EMPLOYER\_CUS\_CURRENT\_MEMBERSHIP\_INFO.MASTER\_CUSTOMER\_ID and SHIP\_CUS\_PRIMARY\_EMPLOYMENT.RELATED\_SUB\_CUSTOMER\_ID=PRIMARY\_EMPLOYER\_CUS\_CURRENT\_MEMBERSHIP\_INFO.SUB\_CUSTOMER\_ID
- Join33: Cus\_Relationship\_Ship\_Related\_Cus\_Info\_VW.MASTER\_CUSTOMER\_ID=SHIP\_CUSTOMER.MASTER\_CUSTOMER\_ID and Cus\_Relationship\_Ship\_Related\_Cus\_Info\_VW.SUB\_CUSTOMER\_ID=SHIP\_CUSTOMER.SUB\_CUSTOMER\_ID
- Join34: Cus\_Relationship\_Bill\_Related\_Cus\_Info\_VW.MASTER\_CUSTOMER\_ID=BILL\_CUSTOMER.MASTER\_CUSTOMER\_ID and Cus\_Relationship\_Bill\_Related\_Cus\_Info\_VW.SUB\_CUSTOMER\_ID=BILL\_CUSTOMER.SUB\_CUSTOMER\_ID
- Join35: BILL\_CUSTOMER.MASTER\_CUSTOMER\_ID=Cus\_Relationship\_Bill\_Subsiary\_Info\_VW.MASTER\_CUSTOMER\_ID and BILL\_CUSTOMER.SUB\_CUSTOMER\_ID=Cus\_Relationship\_Bill\_Subsiary\_Info\_VW.SUB\_CUSTOMER\_ID and Cus\_Relationship\_Bill\_Subsiary\_Info\_VW.RELATIONSHIP\_TYPE = 'CORPORATE' and Cus\_Relationship\_Bill\_Subsiary\_Info\_VW.RELATIONSHIP\_CODE = 'PARENT' and Cus\_Relationship\_Bill\_Subsiary\_Info\_VW.HIERARCHICAL\_FLAG = 'Y'
- Join36: MBR\_PRODUCT.ORG\_ID=MBR\_GROUP\_DETAIL.ORG\_ID and MBR\_PRODUCT.ORG\_UNIT\_ID=MBR\_GROUP\_DETAIL.ORG\_UNIT\_ID and MBR\_PRODUCT.MEMBER\_GROUP=MBR\_GROUP\_DETAIL.MEMBER\_GROUP and MBR\_PRODUCT.LEVEL1=MBR\_GROUP\_DETAIL.LEVEL1
-

## **Context List**

No context







MEMBERSHIP\_INFO  
(INFO)

MBR\_GROUP