

Universe Parameters

Definition

Name: Marketing

Description:

Connection: Personify711

General information

Created: 12/2/2007 by Administrator

Modified: 10/31/2008 by Administrator

Comments:

Statistics:

- 51 Classes
- 422 Objects
- 28 Tables
- 37 Aliases
- 61 Joins
- 0 Contexts
- 0 Hierarchies
- 19 Conditions

Strategies

Join strategy: Edit Manually (none)

Table strategy: (Built-in) Standard

Object strategy: (Built-in) Standard Renaming

Controls

Limit size of result set to: 50000 rows

Limit size of long text objects to: 1000 characters

Limit execution time to: 10 minutes

Warn if cost estimate exceeds: unchecked

SQL parameters

Query

Allow use of subqueries: yes

Allow use of union, intersect and minus operators: yes

Allow complex conditions in Query Panel: yes

Cartesian products: warn

Multiple paths

Generate several SQL statements for each context: yes

Generate several SQL statements for each measure: yes

Allow selection of multiple contexts: no

Links

No links for this universe

Object List

No classes

Object Properties

Class:

Order Line Marketing Codes

Description:

This class holds the frequently used Order Line related marketing code info.

Object:

Market Code

Type:

Character

Description:

This is the Market Code at the order line level.

Select equivalent:

Order_Detail_Ship_Customer_And_Donor_VW.MARKET_CODE

Where equivalent:

Qualification:

dimension

List of values:

2lc, editable, manual refresh, not exportable

Security access level:

0

Can be used:

in result, in condition, in sort

Object status:

show

Object:

Market Code Description

Type:

Character

Description:

This is the market code description at the order line level.

Select equivalent:

MKT_MARKET_MASTER.DESCRPTION

Where equivalent:

Qualification:

dimension

List of values:

2ld, editable, manual refresh, not exportable

Security access level:

0

Can be used:

in result, in condition, in sort

Object status:

show

Object:

Marketing Date

Type:

Date

Description:

This is the marketing date at the order line level.

Select equivalent:

MKT_MARKET_MASTER.MARKET_DATE

Where equivalent:

Qualification:

dimension

List of values:

0r1, editable, manual refresh, not exportable

Security access level:

0

Can be used:

in result, in condition, in sort

Object status: show

Object: **List Code**
 Type: Character
 Description: This is the List Code at the order line level.
 Select equivalent: Order_Detail_Ship_Customer_And_Donor_VW.LIST_CODE
 Where equivalent:

Qualification: dimension
 List of values: 2le, editable, manual refresh, not exportable
 Security access level: 0
 Can be used: in result, in condition, in sort
 Object status: show

Object: **List Code Description**
 Type: Character
 Description: This is the marketing list description at the order line level.
 Select equivalent: MKT_LIST_MASTER.DESCRPTION
 Where equivalent:

Qualification: dimension
 List of values: 0qx, editable, manual refresh, not exportable
 Security access level: 0
 Can be used: in result, in condition, in sort
 Object status: show

Object: **List Source**
 Type: Character
 Description: This is the marketing list source code at the order line level.
 Select equivalent: MKT_LIST_MASTER.LIST_SOURCE_CODE
 Where equivalent:

Qualification: dimension
 List of values: 0lw, editable, manual refresh, not exportable
 Security access level: 0
 Can be used: in result, in condition, in sort
 Object status: show

Object: **List Creation Date**
 Type: Date
 Description: This is the marketing list creation date at the order line level.
 Select equivalent: MKT_LIST_MASTER.LIST_CREATION_DATE

Where equivalent:

Qualification: dimension
List of values: 0qy, editable, manual refresh, not exportable
Security access level: 0
Can be used: in result, in condition, in sort
Object status: show

Object: **Key Code**
Type: Character
Description: This is the key code at the order line level.
Select equivalent: Order_Detail_Ship_Customer_And_Donor_VW.KEY_CODE
Where equivalent:

Qualification: dimension
List of values: 2lf, editable, manual refresh, not exportable
Security access level: 0
Can be used: in result, in condition, in sort
Object status: show

Object: **Key Code Description**
Type: Character
Description: This is the key code description at the order line level.
Select equivalent: MKT_MAIL_MASTER.DESCRPTION
Where equivalent:

Qualification: dimension
List of values: 0r7, editable, manual refresh, not exportable
Security access level: 0
Can be used: in result, in condition, in sort
Object status: show

Object: **Order Method Code**
Type: Character
Description: This is the order method code for the order created.
Select equivalent: Order_Detail_Ship_Customer_And_Donor_VW.ORDER_METHOD_CODE
Where equivalent:

Qualification: dimension
List of values: 2lg, editable, manual refresh, not exportable
Security access level: 0
Can be used: in result, in condition, in sort
Object status: show

Class:	Contact Tracking Marketing Codes
Description:	This class holds the frequently used Contact Tracking related marketing code info.

Object: **Market Code**
 Type: Character
 Description: This is the Market code at the cus activity level.
 Select equivalent: CUS_ACTIVITY.MARKET_CODE
 Where equivalent:

Qualification: dimension
 List of values: 2li, editable, manual refresh, not exportable
 Security access level: 0
 Can be used: in result, in condition, in sort
 Object status: show

Object: **List Code**
 Type: Character
 Description: This is the list code at the cus activity level.
 Select equivalent: CUS_ACTIVITY.LIST_CODE
 Where equivalent:

Qualification: dimension
 List of values: 2lj, editable, manual refresh, not exportable
 Security access level: 0
 Can be used: in result, in condition, in sort
 Object status: show

Object: **Key Code**
 Type: Character
 Description: This is the Market code at the cus activity level.
 Select equivalent: CUS_ACTIVITY.KEY_CODE
 Where equivalent:

Qualification: dimension
 List of values: 2lk, editable, manual refresh, not exportable
 Security access level: 0
 Can be used: in result, in condition, in sort
 Object status: show

Class:	Discount & Coupon Info
Description:	This class holds the discount and coupon info for the order line item.

Object: **Discount ID**

Type: Character
 Description: This is the discount id of the order line item.
 Select equivalent: Order_Detail_Ship_Customer_And_Donor_VW.PRODUCT_DISCOUNT_ID
 Where equivalent:

Qualification: dimension
 List of values: 07j, editable, manual refresh, not exportable
 Security access level: 0
 Can be used: in result, in condition, in sort
 Object status: show

Object: **Description**
 Type: Character
 Description: This is the description of the dicount id.
 Select equivalent: PRODUCT_DISCOUNT.DESCRPTION
 Where equivalent:

Qualification: dimension
 List of values: 2m5, editable, manual refresh, not exportable
 Security access level: 0
 Can be used: in result, in condition, in sort
 Object status: show

Object: **Manual Discount?**
 Type: Character
 Description: This indicates if there is a manual discount.
 Select equivalent: Order_Detail_Ship_Customer_And_Donor_VW.MANUAL_DISCOUNT_FLAG
 Where equivalent:

Qualification: dimension
 List of values: 07k, editable, manual refresh, not exportable
 Security access level: 0
 Can be used: in result, in condition, in sort
 Object status: show

Object: **Discount Amount**
 Type: Number
 Description: This is the discount amount on the order line item.
 Select equivalent: Order_Detail_Ship_Customer_And_Donor_VW.BASE_UNIT_DISCOUNT
 Where equivalent:

Qualification: measure
 Aggregate function: Sum

List of values: 2fk, editable, manual refresh, not exportable
 Security access level: 0
 Can be used: in result, in condition, in sort
 Object status: show

Object: **Coupon Code**
 Type: Character
 Description: This is the coupon code of the order detail line item.
 Select equivalent: Order_Detail_Ship_Customer_And_Donor_VW.COUPON_CODE
 Where equivalent:

Qualification: dimension
 List of values: 07l, editable, manual refresh, not exportable
 Security access level: 0
 Can be used: in result, in condition, in sort
 Object status: show

Object: **Base Coupon Amount**
 Type: Number
 Description: This is the base coupon amount of the coupon item.
 Select equivalent: Order_Detail_Ship_Customer_And_Donor_VW.BASE_COUPON_AMOUNT
 Where equivalent:

Qualification: measure
 Aggregate function: Sum
 List of values: 2lh, editable, manual refresh, not exportable
 Security access level: 0
 Can be used: in result, in condition, in sort
 Object status: show

Object: **Base Unit Price**
 Type: Number
 Description: This is the base unit price of the discount.
 Select equivalent: Order_Detail_Ship_Customer_And_Donor_VW.BASE_UNIT_PRICE
 Where equivalent:

Qualification: dimension
 List of values: 2m1, editable, manual refresh, not exportable
 Security access level: 0
 Can be used: in result, in condition, in sort
 Object status: show

Object: **Effective Begin Date**
Type: Date
Description: This is the product discount begin date .
Select equivalent: PRODUCT_DISCOUNT.EFFECTIVE_BEGIN_DATE
Where equivalent:

Qualification: dimension
List of values: 2mn, editable, manual refresh, not exportable
Security access level: 0
Can be used: in result, in condition, in sort
Object status: show

Object: **Effective End Date**
Type: Date
Description: This is the product discount end date.
Select equivalent: PRODUCT_DISCOUNT.EFFECTIVE_END_DATE
Where equivalent:

Qualification: dimension
List of values: 2mo, editable, manual refresh, not exportable
Security access level: 0
Can be used: in result, in condition, in sort
Object status: show

Object: **Purchasing Group**
Type: Character
Description: This is the purchase group for the discounted product.
Select equivalent: PRODUCT_DISCOUNT.PURCHASING_GROUP
Where equivalent:

Qualification: dimension
List of values: 2mr, editable, manual refresh, not exportable
Security access level: 0
Can be used: in result, in condition, in sort
Object status: show

Object: **Discount Category Code**
Type: Character
Description: This is the discout category for the product.
Select equivalent: PRODUCT_DISCOUNT.DISCOUNT_CATEGORY_CODE
Where equivalent:

Qualification: dimension

List of values: 2n4, editable, manual refresh, not exportable
 Security access level: 0
 Can be used: in result, in condition, in sort
 Object status: show

Object: **Agency Unit Discount**
 Type: Number
 Description:

Select equivalent: Order_Detail_Ship_Customer_And_Donor_VW.AGENCY_UNIT_DISCOUNT
 Where equivalent:

Qualification: measure
 Aggregate function: Sum
 List of values: 2qr, editable, manual refresh, not exportable
 Security access level: 0
 Can be used: in result, in condition, in sort
 Object status: show

Class: Fundraising Info
Description: This class holds the fundraising details for the order line item.

Object: **Appeal**
 Type: Character
 Description: This is the appeal associated with the fund raising line item.
 Select equivalent: Order_Detail_Ship_Customer_And_Donor_VW.APPEAL
 Where equivalent:

Qualification: dimension
 List of values: 06u, editable, automatic refresh, not exportable
 Security access level: 0
 Can be used: in result, in condition, in sort
 Object status: show

Object: **Campaign**
 Type: Character
 Description: This is the campaign associated with the fund raising line item.
 Select equivalent: Order_Detail_Ship_Customer_And_Donor_VW.CAMPAIGN
 Where equivalent:

Qualification: dimension
 List of values: 06s, editable, automatic refresh, not exportable
 Security access level: 0
 Can be used: in result, in condition, in sort

Object status: show

Object: **Fund**
 Type: Character
 Description: This is the fund associated with the fund raising line item.
 Select equivalent: Order_Detail_Ship_Customer_And_Donor_VW.FUND
 Where equivalent:

Qualification: dimension
 List of values: 06t, editable, automatic refresh, not exportable
 Security access level: 0
 Can be used: in result, in condition, in sort
 Object status: show

Object: **Appeal Activity Code**
 Type: Character
 Description: This is the appeal activity associated with the fund raising line item.
 Select equivalent: Order_Detail_Ship_Customer_And_Donor_VW.APPEAL_ACTIVITY_CODE
 Where equivalent:

Qualification: dimension
 List of values: 06v, editable, manual refresh, not exportable
 Security access level: 0
 Can be used: in result, in condition, in sort
 Object status: show

Object: **Appeal Activity Description**
 Type: Character
 Description: This is the description for the appeal activity associated with the fund raising line item.
 Select equivalent: APP_CODE_APPEAL_ACTIVITY.DESCR
 Where equivalent:

Qualification: dimension
 List of values: 2p3, editable, manual refresh, not exportable
 Security access level: 0
 Can be used: in result, in condition, in sort
 Object status: show

Object: **Recognition Status Code**
 Type: Character
 Description: This is the recognition status of the fund raising line item.
 Select equivalent: Order_Detail_Ship_Customer_And_Donor_VW.RECOGNITION_STATUS_CODE

Where equivalent:

Qualification: dimension
 List of values: 06r, editable, automatic refresh, exportable
 Security access level: 0
 Can be used: in result, in condition, in sort
 Object status: show

Object: **Recognition Status Description**
 Type: Character
 Description: This is the description for the recognition status of the fund raising line item.
 Select equivalent: APP_CODE_RECOGNITION_STATUS.DESCR
 Where equivalent:

Qualification: dimension
 List of values: 2p4, editable, manual refresh, not exportable
 Security access level: 0
 Can be used: in result, in condition, in sort
 Object status: show

Class:	Fund Appeal Activity
Description:	This class holds the fund , appeal and campaign activities of the fund raising item.

Object: **Market Code**
 Type: Character
 Description: This is the market code associated with the fund raising line item.
 Select equivalent: FND_APPEAL_ACTIVITY.MARKET_CODE
 Where equivalent:

Qualification: dimension
 List of values: 2kk, editable, manual refresh, not exportable
 Security access level: 0
 Can be used: in result, in condition, in sort
 Object status: show

Object: **List Code**
 Type: Character
 Description: This is the list code associated with the fund raising line item.
 Select equivalent: FND_APPEAL_ACTIVITY.LIST_CODE
 Where equivalent:

Qualification: dimension
 List of values: 2ki, editable, manual refresh, not exportable
 Security access level: 0

Can be used: in result, in condition, in sort
 Object status: show

Object: **Key Code**
 Type: Character
 Description: This is the key code associated with the fund raising line item.
 Select equivalent: FND_APPEAL_ACTIVITY.KEY_CODE
 Where equivalent:

Qualification: dimension
 List of values: 2kj, editable, manual refresh, not exportable
 Security access level: 0
 Can be used: in result, in condition, in sort
 Object status: show

Object: **Appeal Activity Code**
 Type: Character
 Description: This is the appeal activity code associated with the fund raising line item.
 Select equivalent: FND_APPEAL_ACTIVITY.APPEAL_ACTIVITY_CODE
 Where equivalent:

Qualification: dimension
 List of values: 2kd, editable, manual refresh, not exportable
 Security access level: 0
 Can be used: in result, in condition, in sort
 Object status: show

Object: **Appeal Activity Description**
 Type: Character
 Description: This is the description of appeal activity associated with the fund raising line item.
 Select equivalent: FND_APPEAL_ACTIVITY.DESCRPTION
 Where equivalent:

Qualification: dimension
 List of values: 2ke, editable, manual refresh, not exportable
 Security access level: 0
 Can be used: in result, in condition, in sort
 Object status: show

Object: **Activity Date**
 Type: Date
 Description: This is the activity date associated with the fund raising line item.

Select equivalent: FND_APEAL_ACTIVITY.ACTIVITY_DATE
Where equivalent:

Qualification: dimension
List of values: 2kc, editable, manual refresh, not exportable
Security access level: 0
Can be used: in result, in condition, in sort
Object status: show

Object: **Contact Count**
Type: Number
Description: This is the contact count associated with the fund raising line item.
Select equivalent: FND_APEAL_ACTIVITY.CONTACT_COUNT
Where equivalent:

Qualification: dimension
List of values: 2kf, editable, manual refresh, not exportable
Security access level: 0
Can be used: in result, in condition, in sort
Object status: show

Class:	Order Line Status Info
Description:	This class holds the Order line status info.

Object: **Order Line Status Code**
Type: Character
Description: The status of the order line item.
Select equivalent: Order_Detail_Ship_Customer_And_Donor_VW.LINE_STATUS_CODE
Where equivalent:

Qualification: dimension
List of values: 00m, editable, manual refresh, exportable
Security access level: 0
Can be used: in result, in condition, in sort
Object status: show

Object: **Order Line Status Description**
Type: Character
Description: This is the description of the order line status.
Select equivalent: APP_CODE_LINE_STATUS_CODE.DESCR
Where equivalent:

Qualification: dimension
List of values: 2p5, editable, manual refresh, not exportable

Security access level: 0
 Can be used: in result, in condition, in sort
 Object status: show

Object: **Order Line Status Date**
 Type: Date
 Description: The last change date for the order line item status.
 Select equivalent: Order_Detail_Ship_Customer_And_Donor_VW.LINE_STATUS_DATE
 Where equivalent:

Qualification: dimension
 List of values: no
 Security access level: 0
 Can be used: in result, in condition, in sort
 Object status: show

Object: **Order Line Status Reason Code**
 Type: Character
 Description: The reason for change in the order line status.
 Select equivalent: Order_Detail_Ship_Customer_And_Donor_VW.LINE_STATUS_REASON_CODE
 Where equivalent:

Qualification: dimension
 List of values: 00o, editable, automatic refresh, exportable
 Security access level: 0
 Can be used: in result, in condition, in sort
 Object status: show

Object: **Order Line Status Reason Description**
 Type: Character
 Description: This is the description for the order line status change reason
 Select equivalent: APP_CODE_LINE_STATUS_REASON_CODE.DESCR
 Where equivalent:

Qualification: dimension
 List of values: 2p6, editable, manual refresh, not exportable
 Security access level: 0
 Can be used: in result, in condition, in sort
 Object status: show

Object: **Order Line Fulfill Status Code**
 Type: Character

Description: The fulfill status for the order line item.
 Select equivalent: Order_Detail_Ship_Customer_And_Donor_VW.FULFILL_STATUS_CODE
 Where equivalent:

Qualification: dimension
 List of values: 00p, editable, automatic refresh, exportable
 Security access level: 0
 Can be used: in result, in condition, in sort
 Object status: show

Object: **Order Line Fulfill Status Description**
 Type: Character
 Description: This is the description for the fulfill status of the order line.
 Select equivalent: APP_CODE_FULFILL_STATUS_CODE.DESCR
 Where equivalent:

Qualification: dimension
 List of values: 2p7, editable, manual refresh, not exportable
 Security access level: 0
 Can be used: in result, in condition, in sort
 Object status: show

Object: **Order Line Fulfill Status Date**
 Type: Date
 Description: The last change date for the order line item fulfill status.
 Select equivalent: Order_Detail_Ship_Customer_And_Donor_VW.FULFILL_DATE
 Where equivalent:

Qualification: dimension
 List of values: no
 Security access level: 0
 Can be used: in result, in condition, in sort
 Object status: show

Class:	Additional Order Line Info
Description:	This class holds the additional order line info.

Object: **Original Order Number**
 Type: Character
 Description: The original order number of the order from which this order was renewed.
 Select equivalent: Order_Detail_Ship_Customer_And_Donor_VW.ORIGINAL_ORDER_NO
 Where equivalent:

Qualification: dimension

List of values: no
 Security access level: 0
 Can be used: in result, in condition, in sort
 Object status: show

Object: **Original Order Line Number**
 Type: Number
 Description: If this is a renewed order then, this is the original order line item number.
 Select equivalent: Order_Detail_Ship_Customer_And_Donor_VW.ORIGINAL_ORDER_LINE_NO
 Where equivalent:

Qualification: dimension
 List of values: no
 Security access level: 0
 Can be used: in result, in condition, in sort
 Object status: show

Object: **Transfer From Order Number**
 Type: Character
 Description: If this order was created because an order was transferred to this order then this is the order number of the original order.
 Select equivalent: Order_Detail_Ship_Customer_And_Donor_VW.TRANSFER_FROM_ORDER_NO
 Where equivalent:

Qualification: dimension
 List of values: no
 Security access level: 0
 Can be used: in result, in condition, in sort
 Object status: show

Object: **Transfer From Order Line Number**
 Type: Number
 Description: If this order was created because an order was transferred to this order then this is the order line number of the original order.
 Select equivalent: Order_Detail_Ship_Customer_And_Donor_VW.TRANSFER_FROM_ORDER_LINE_
 Where equivalent:

Qualification: dimension
 List of values: no
 Security access level: 0
 Can be used: in result, in condition, in sort
 Object status: show

Object: **Transfer To Order Number**
 Type: Character
 Description: If this order was transferred to another order then this is the new order number
 Select equivalent: Order_Detail_Ship_Customer_And_Donor_VW.TRANSFER_TO_ORDER_NO
 Where equivalent:

Qualification: dimension
 List of values: no
 Security access level: 0
 Can be used: in result, in condition, in sort
 Object status: show

Object: **Transfer To Order Line Number**
 Type: Number
 Description: If this order was transferred to another order then this is the new order line number
 Select equivalent: Order_Detail_Ship_Customer_And_Donor_VW.TRANSFER_TO_ORDER_LINE_NO
 Where equivalent:

Qualification: dimension
 List of values: no
 Security access level: 0
 Can be used: in result, in condition, in sort
 Object status: show

Object: **Order Line Type Code**
 Type: Character
 Description: This signifies the type of product present in the order line item. Possible values are 'IP' - Individual Product, 'IC' - Individual Component, 'PC' - Package Component, 'PK' - Package.
 Select equivalent: Order_Detail_Ship_Customer_And_Donor_VW.LINE_TYPE_CODE
 Where equivalent:

Qualification: dimension
 List of values: 00x, editable, automatic refresh, exportable
 Security access level: 0
 Can be used: in result, in condition, in sort
 Object status: show

Object: **Order Line Type Description**
 Type: Character
 Description: This is the description for the the order line type.
 Select equivalent: APP_CODE_LINE_TYPE_CODE.DESCR
 Where equivalent:

Qualification: dimension
 List of values: 2p8, editable, manual refresh, not exportable
 Security access level: 0
 Can be used: in result, in condition, in sort
 Object status: show

Object: **Order Line Level**
 Type: Number
 Description: This is the level to which line relates to. For instance, if line #2 is a child of line #1, then it would exist at level 2.
 Select equivalent: Order_Detail_Ship_Customer_And_Donor_VW.LINE_LEVEL
 Where equivalent:

Qualification: dimension
 List of values: no
 Security access level: 0
 Can be used: in result, in condition, in sort
 Object status: show

Object: **Related Order Line Number**
 Type: Number
 Description: If the line relates to another line item what line item does it relate to. E.g . if an event is related to a meeting then this field will contain the order li

ne number of the meeting
for the event order line.

Select equivalent: Order_Detail_Ship_Customer_And_Donor_VW.RELATED_LINE_NO
Where equivalent:

Qualification: dimension
List of values: no
Security access level: 0
Can be used: in result, in condition, in sort
Object status: show

Class:	Order Address
Description:	This class holds the order address of the order line item (ship to if subsystem is other than FND else bill to where subsystem is FND)

Object: **Address 1**
Type: Character
Description: This is the Address 1 of the order created , if the subsystem is aThis is the market code associated with the fund raising line item.

Select equivalent: Order_Detail_Cus_Address.ADDRESS_1
Where equivalent:

Qualification: dimension
List of values: 2og, editable, manual refresh, not exportable
Security access level: 0
Can be used: in result, in condition, in sort
Object status: show

Object: **Address 2**
Type: Character
Description: This is the Address 2 of the order created , if the subsystem is aThis is the market code associated with the fund raising line item.

Select equivalent: Order_Detail_Cus_Address.ADDRESS_2
Where equivalent:

Qualification: dimension
 List of values: 2oh, editable, manual refresh, not exportable
 Security access level: 0
 Can be used: in result, in condition, in sort
 Object status: show

Object: **Address 3**
 Type: Character
 Description: This is the Address 3 of the order created , if the subsystem is aThis is the market code associated with the fund raising line item.
 Select equivalent: Order_Detail_Cus_Address.ADDRESS_3
 Where equivalent:

Qualification: dimension
 List of values: 2oi, editable, manual refresh, not exportable
 Security access level: 0
 Can be used: in result, in condition, in sort
 Object status: show

Object: **Address 4**
 Type: Character
 Description: This is the Address 4 of the order created , if the subsystem is aThis is the market code associated with the fund raising line item.
 Select equivalent: Order_Detail_Cus_Address.ADDRESS_4
 Where equivalent:

Qualification: dimension
 List of values: 2oj, editable, manual refresh, not exportable
 Security access level: 0
 Can be used: in result, in condition, in sort
 Object status: show

Object: **City**
 Type: Character

Description: This is the City of the order created , if the system is aThis is the market code associated with the fund raising line item.

Select equivalent: Order_Detail_Cus_Address.CITY

Where equivalent:

Qualification: dimension

List of values: 20k, editable, manual refresh, not exportable

Security access level: 0

Can be used: in result, in condition, in sort

Object status: show

Object: **State**

Type: Character

Description: This is the state of the order created , if the system is aThis is the market code associated with the fund raising line item.

Select equivalent: Order_Detail_Cus_Address.STATE

Where equivalent:

Qualification: dimension

List of values: 20l, editable, manual refresh, not exportable

Security access level: 0

Can be used: in result, in condition, in sort

Object status: show

Object: **Postal Code**

Type: Character

Description: This is the Postal Code of the order created , if the system is aThis is the market code associated with the fund raising line item.

Select equivalent: Order_Detail_Cus_Address.POSTAL_CODE

Where equivalent:

Qualification: dimension

List of values: 20m, editable, manual refresh, not exportable

Security access level: 0

Can be used: in result, in condition, in sort
Object status: show

Object: **Country Code**
Type: Character
Description: This is the country in which the order created , if the subsystem is aThis is the market code associated with the fund raising line item.
Select equivalent: Order_Detail_Cus_Address.COUNTRY_CODE
Where equivalent:

Qualification: dimension
List of values: 2on, editable, manual refresh, not exportable
Security access level: 0
Can be used: in result, in condition, in sort
Object status: show

Object: **Country Description**
Type: Character
Description: This is the description of the country in which the order was created.
Select equivalent: Order_Detail_Cus_Address.COUNTRY_DESCR
Where equivalent:

Qualification: dimension
List of values: 2oo, editable, manual refresh, not exportable
Security access level: 0
Can be used: in result, in condition, in sort
Object status: show

Class:	Order Line Creation & Modification Date
Description:	

Object: **Order Creation Date**
Type: Date
Description: This is the order line created date.
Select equivalent: Order_Detail_Ship_Customer_And_Donor_VW.ADDDATE
Where equivalent:

Qualification: dimension
List of values: 2fn, editable, manual refresh, not exportable

Security access level: 0
 Can be used: in result, in condition, in sort
 Object status: show

Object: **Order Line Created Operator**
 Type: Character
 Description: This is the operator who created the order.
 Select equivalent: Order_Detail_Ship_Customer_And_Donor_VW.ADDOPER
 Where equivalent:

Qualification: dimension
 List of values: 2ot, editable, manual refresh, not exportable
 Security access level: 0
 Can be used: in result, in condition, in sort
 Object status: show

Object: **Order Modified Date**
 Type: Date
 Description: This is the order line modified date.
 Select equivalent: Order_Detail_Ship_Customer_And_Donor_VW.MODDATE
 Where equivalent:

Qualification: dimension
 List of values: 2fo, editable, manual refresh, not exportable
 Security access level: 0
 Can be used: in result, in condition, in sort
 Object status: show

Object: **Order Line Modified Operator**
 Type: Character
 Description: This is the operator who modified the order line.
 Select equivalent: Order_Detail_Ship_Customer_And_Donor_VW.MODOPER
 Where equivalent:

Qualification: dimension
 List of values: 2ou, editable, manual refresh, not exportable
 Security access level: 0
 Can be used: in result, in condition, in sort
 Object status: show

Class:	Mailing Address
Description:	This class holds the mailing address of the customer

Object: **Address ID**
Type: Number
Description: This is the mailing address id.
Select equivalent: CUS_ADDRESS_DETAIL_MKT_LIST_INFO.CUS_ADDRESS_ID
Where equivalent:

Qualification: dimension
List of values: no
Security access level: 0
Can be used: in result, in condition, in sort
Object status: show

Object: **Address Type Code**
Type: Character
Description: This is the address type of the customer's mailing address.
Select equivalent: CUS_ADDRESS_DETAIL_MKT_LIST_INFO.ADDRESS_TYPE_CODE
Where equivalent:

Qualification: dimension
List of values: 0ou, editable, manual refresh, not exportable
Security access level: 0
Can be used: in result, in condition, in sort
Object status: show

Object: **Address Line 1**
Type: Character
Description: This is the address line 1 of the mailing address.
Select equivalent: CUS_ADDRESS_MKT_LIST_INFO.ADDRESS_1
Where equivalent:

Qualification: dimension
List of values: no
Security access level: 0
Can be used: in result, in condition, in sort
Object status: show

Object: **Address Line 2**
Type: Character
Description: This is the address line 2 of the mailing address.
Select equivalent: CUS_ADDRESS_MKT_LIST_INFO.ADDRESS_2
Where equivalent:

Qualification: dimension

List of values: no
 Security access level: 0
 Can be used: in result, in condition, in sort
 Object status: show

Object: **Address Line 3**
 Type: Character
 Description: This is the address line 3 of the mailing address.
 Select equivalent: CUS_ADDRESS_MKT_LIST_INFO.ADDRESS_3
 Where equivalent:

Qualification: dimension
 List of values: no
 Security access level: 0
 Can be used: in result, in condition, in sort
 Object status: show

Object: **Address Line 4**
 Type: Character
 Description: This is the address line 4 of the mailing address.
 Select equivalent: CUS_ADDRESS_MKT_LIST_INFO.ADDRESS_4
 Where equivalent:

Qualification: dimension
 List of values: no
 Security access level: 0
 Can be used: in result, in condition, in sort
 Object status: show

Object: **City**
 Type: Character
 Description: This is the city of the mailing address.
 Select equivalent: CUS_ADDRESS_MKT_LIST_INFO.CITY
 Where equivalent:

Qualification: dimension
 List of values: 0p0, editable, manual refresh, not exportable
 Security access level: 0
 Can be used: in result, in condition, in sort
 Object status: show

Object: **State**

Type: Character
 Description: This is the state of the mailing address.
 Select equivalent: CUS_ADDRESS_MKT_LIST_INFO.STATE
 Where equivalent:

Qualification: dimension
 List of values: 0p1, editable, manual refresh, not exportable
 Security access level: 0
 Can be used: in result, in condition, in sort
 Object status: show

Object: **Zip**
 Type: Character
 Description: This is the zip of the mailing address.
 Select equivalent: CUS_ADDRESS_MKT_LIST_INFO.POSTAL_CODE
 Where equivalent:

Qualification: dimension
 List of values: 0p2, editable, manual refresh, not exportable
 Security access level: 0
 Can be used: in result, in condition, in sort
 Object status: show

Object: **Country Code**
 Type: Character
 Description: This is the country code of the mailing address.
 Select equivalent: CUS_ADDRESS_MKT_LIST_INFO.COUNTRY_CODE
 Where equivalent:

Qualification: dimension
 List of values: 0p3, editable, manual refresh, not exportable
 Security access level: 0
 Can be used: in result, in condition, in sort
 Object status: show

Object: **Country Description**
 Type: Character
 Description: This is the description of the mailing address.
 Select equivalent: CUS_ADDRESS_MKT_LIST_INFO.COUNTRY_DESCR
 Where equivalent:

Qualification: dimension
 List of values: no

Security access level: 0
 Can be used: in result, in condition, in sort
 Object status: show

Object: **Full Address**
 Type: Character
 Description: This is the mailing address.
 Select equivalent: CUS_ADDRESS_DETAIL_MKT_LIST_INFO.FORMATTED_DETAIL + CUS_ADDRESS_MKT_LIST_INFO.FORMATTED_ADDRESSES

Where equivalent:

Qualification: dimension
 List of values: no
 Security access level: 0
 Can be used: in result, in condition, in sort
 Object status: show

Class: Membership Info
Description: This class holds the info regarding the marketing list customers membership info.

Object: **Member Type**
 Type: Character
 Description: This is the type of membership of the customer.
 Select equivalent: CUS_CURRENT_MEMBERSHIP_INFO_MKT_LIST.NATIONAL_LEVEL2
 Where equivalent:

Qualification: dimension
 List of values: no
 Security access level: 0
 Can be used: in result, in condition, in sort
 Object status: show

Object: **Membership Begin Date**
 Type: Date
 Description: This is the begin date
 Select equivalent: CUS_CURRENT_MEMBERSHIP_INFO_MKT_LIST.CYCLE_BEGIN_DATE
 Where equivalent:

Qualification: dimension
 List of values: no
 Security access level: 0

Can be used: in result, in condition, in sort
 Object status: show

Object: **Membership End Date**
 Type: Date
 Description: This is the end date of the membership
 Select equivalent: CUS_CURRENT_MEMBERSHIP_INFO_MKT_LIST.CYCLE_END_DATE
 Where equivalent:

Qualification: dimension
 List of values: no
 Security access level: 0
 Can be used: in result, in condition, in sort
 Object status: show

Object: **Membership Description**
 Type: Character
 Description: This is the description of the type of membership
 Select equivalent: CUS_CURRENT_MEMBERSHIP_INFO_MKT_LIST.NATIONAL_DESCR
 Where equivalent:

Qualification: dimension
 List of values: no
 Security access level: 0
 Can be used: in result, in condition, in sort
 Object status: show

Object: **Member Since Date**
 Type: Date
 Description: This is the member since date
 Select equivalent: CUS_CURRENT_MEMBERSHIP_INFO_MKT_LIST.NATIONAL_SINCE_DATE
 Where equivalent:

Qualification: dimension
 List of values: no
 Security access level: 0
 Can be used: in result, in condition, in sort
 Object status: show

Object: **Chapter 1**
 Type: Character
 Description: This is the first chapter that the customer is a member of.

Select equivalent: CUS_CURRENT_MEMBERSHIP_INFO_MKT_LIST.CHAPTER_DESCR
Where equivalent:

Qualification: dimension
List of values: no
Security access level: 0
Can be used: in result, in condition, in sort
Object status: show

Object: **Chapter 2**
Type: Character
Description: This is the second chapter that the customer is a member of.
Select equivalent: CUS_CURRENT_MEMBERSHIP_INFO_MKT_LIST.CHAPTER2_DESCR
Where equivalent:

Qualification: dimension
List of values: no
Security access level: 0
Can be used: in result, in condition, in sort
Object status: show

Object: **Section 1**
Type: Character
Description: This is the first section that the customer is a member of.
Select equivalent: CUS_CURRENT_MEMBERSHIP_INFO_MKT_LIST.SECTION_DESCR
Where equivalent:

Qualification: dimension
List of values: no
Security access level: 0
Can be used: in result, in condition, in sort
Object status: show

Object: **Section 2**
Type: Character
Description: This is the second chapter that the customer is a member of.
Select equivalent: CUS_CURRENT_MEMBERSHIP_INFO_MKT_LIST.SECTION2_DESCR
Where equivalent:

Qualification: dimension
List of values: no
Security access level: 0
Can be used: in result, in condition, in sort

Object status: show

Class: **Name Components**
 Description: This class holds the information about the customers nameing components

Object: **Last First Name**
 Type: Character
 Description: This is the concatenation of the last name and first name
 Select equivalent: CUSTOMER_MKT_LIST_INFO.LAST_FIRST_NAME
 Where equivalent:

Qualification: dimension
 List of values: no
 Security access level: 0
 Can be used: in result, in condition, in sort
 Object status: show

Object: **Last Name**
 Type: Character
 Description: This is the last name
 Select equivalent: CUSTOMER_MKT_LIST_INFO.LAST_NAME
 Where equivalent:

Qualification: dimension
 List of values: no
 Security access level: 0
 Can be used: in result, in condition, in sort
 Object status: show

Object: **First Name**
 Type: Character
 Description: This is the first name
 Select equivalent: CUSTOMER_MKT_LIST_INFO.FIRST_NAME
 Where equivalent:

Qualification: dimension
 List of values: no
 Security access level: 0
 Can be used: in result, in condition, in sort
 Object status: show

Object: **Name Prefix**
 Type: Character

Description: This is the name prefix
Select equivalent: CUSTOMER_MKT_LIST_INFO.NAME_PREFIX
Where equivalent:

Qualification: dimension
List of values: no
Security access level: 0
Can be used: in result, in condition, in sort
Object status: show

Object: **Name Suffix**
Type: Character
Description: This is the name suffix
Select equivalent: CUSTOMER_MKT_LIST_INFO.NAME_SUFFIX
Where equivalent:

Qualification: dimension
List of values: no
Security access level: 0
Can be used: in result, in condition, in sort
Object status: show

Object: **Professional Credentials**
Type: Character
Description: These are the professional credentials
Select equivalent: CUSTOMER_MKT_LIST_INFO.NAME_CREDENTIALS
Where equivalent:

Qualification: dimension
List of values: no
Security access level: 0
Can be used: in result, in condition, in sort
Object status: show

Object: **Nickname**
Type: Character
Description:
Select equivalent: CUSTOMER_MKT_LIST_INFO.NICKNAME
Where equivalent:
Qualification: dimension

List of values: no
Security access level: 0
Can be used: in result, in condition, in sort
Object status: show

Object: **Informal Salutation**
Type: Character
Description:

Select equivalent: CUSTOMER_MKT_LIST_INFO.INFORMAL_SALUTATION

Where equivalent:

Qualification: dimension
List of values: no
Security access level: 0
Can be used: in result, in condition, in sort
Object status: show

Object: **Formal Salutation**
Type: Character
Description:

Select equivalent: CUSTOMER_MKT_LIST_INFO.FORMAL_SALUTATION

Where equivalent:

Qualification: dimension
List of values: no
Security access level: 0
Can be used: in result, in condition, in sort
Object status: show

Object: **Record Type**
Type: Character
Description:

Select equivalent: CUSTOMER_MKT_LIST_INFO.Record_Type

Where equivalent:

Qualification: dimension
List of values: 0f6, editable, manual refresh, not exportable

Security access level: 0
 Can be used: in result, in condition, in sort
 Object status: show

Class:	Primary Employer
Description:	This class holds the info for the Primary Employer details of the customer

Object: **Employer Customer ID**
 Type: Character
 Description: This is the concatenation of the master customer id and the sub customer id of the employer.
 Select equivalent: Cus_Relationship_Related_Cus_Info_Mkt_List_Primary_Employment.RELATED_CUS_CusMastSubID
 Where equivalent:
 Qualification: dimension
 List of values: no
 Security access level: 0
 Can be used: in result, in condition, in sort
 Object status: show

Object: **Employer Master Customer ID**
 Type: Character
 Description: This is the master customer id of the employer.
 Select equivalent: Cus_Relationship_Related_Cus_Info_Mkt_List_Primary_Employment.RELATED_MASTER_CUSTOMER_ID
 Where equivalent:
 Qualification: dimension
 List of values: no
 Security access level: 0
 Can be used: in result, in condition, in sort
 Object status: show

Object: **Employer Sub Customer ID**
 Type: Number
 Description: This is the sub customer id of the employer.
 Select equivalent: Cus_Relationship_Related_

Cus_Info_Mkt_List_Primary
_Employment.RELATED_SUB_
CUSTOMER_ID

Where equivalent:

Qualification: dimension
List of values: no
Security access level: 0
Can be used: in result, in condition, in sort
Object status: show

Object: **Employer Label Name**
Type: Character
Description: This is the label name of the employer.
Select equivalent: Cus_Relationship_Related_
Cus_Info_Mkt_List_Primary
_Employment.RELATED_CUS_
LABEL_NAME

Where equivalent:

Qualification: dimension
List of values: no
Security access level: 0
Can be used: in result, in condition, in sort
Object status: show

Object: **Employer Customer Class Code**
Type: Character
Description: This is the customer class code of the employer.
Select equivalent: Cus_Relationship_Related_
Cus_Info_Mkt_List_Primary
_Employment.RELATED_CUS_
CUSTOMER_CLASS_CODE

Where equivalent:

Qualification: dimension
List of values: no
Security access level: 0
Can be used: in result, in condition, in sort
Object status: show

Object: **Employer Customer Class Description**
Type: Character

Description: This is the description of the customer class of the employer.
 Select equivalent: APP_CODE_PRIMARY_EMPLOYMENT.DESCR
 Where equivalent:

Qualification: dimension
 List of values: 2p9, editable, manual refresh, not exportable
 Security access level: 0
 Can be used: in result, in condition, in sort
 Object status: show

Object: **Employer Customer Status Code**
 Type: Character
 Description: This is the customer status code of the employer.
 Select equivalent: Cus_Relationship_Related_
 Cus_Info_Mkt_List_Primary
 _Employment.RELATED_CUS_
 CUSTOMER_STATUS_CODE
 Where equivalent:

Qualification: dimension
 List of values: no
 Security access level: 0
 Can be used: in result, in condition, in sort
 Object status: show

Object: **Employer Customer Status Description**
 Type: Character
 Description: This is the description of the customer status of the employer.
 Select equivalent: APP_CODE_EMPLOYER_CUSTOMER_STATUS.DESCR
 Where equivalent:

Qualification: dimension
 List of values: 2pb, editable, manual refresh, not exportable
 Security access level: 0
 Can be used: in result, in condition, in sort
 Object status: show

Object: **Employer City**
 Type: Character
 Description: This is the employer city.
 Select equivalent: Cus_Relationship_Related_
 Cus_Info_Mkt_List_Primary
 _Employment.RELATED_CUS_

Where equivalent: CITY

Qualification: dimension
 List of values: 2op, editable, manual refresh, not exportable
 Security access level: 0
 Can be used: in result, in condition, in sort
 Object status: show

Object: **Employer State**
 Type: Character
 Description: This is the employer state.
 Select equivalent: Cus_Relationship_Related_
 Cus_Info_Mkt_List_Primary
 _Employment.RELATED_CUS_
 STATE

Where equivalent:

Qualification: dimension
 List of values: 2oq, editable, manual refresh, not exportable
 Security access level: 0
 Can be used: in result, in condition, in sort
 Object status: show

Object: **Employer Zip**
 Type: Character
 Description: This is the employer zip.
 Select equivalent: Cus_Relationship_Related_
 Cus_Info_Mkt_List_Primary
 _Employment.RELATED_CUS_
 POSTAL_CODE

Where equivalent:

Qualification: dimension
 List of values: 2or, editable, manual refresh, not exportable
 Security access level: 0
 Can be used: in result, in condition, in sort
 Object status: show

Object: **Employer Country**
 Type: Character
 Description: This is the employer country.
 Select equivalent: Cus_Relationship_Related_

Cus_Info_Mkt_List_Primary
_Employment.RELATED_CUS_
COUNTRY_CODE

Where equivalent:

Qualification: dimension
List of values: 2os, editable, manual refresh, not exportable
Security access level: 0
Can be used: in result, in condition, in sort
Object status: show

Object: **Employer Primary Address**
Type: Character
Description: This is the primary address of the employer.
Select equivalent: Cus_Relationship_Related_
Cus_Info_Mkt_List_Primary
_Employment.RELATED_CUS_
ADDRESS_LABEL

Where equivalent:

Qualification: dimension
List of values: no
Security access level: 0
Can be used: in result, in condition, in sort
Object status: show

Class:	Primary Employer Membership Info
Description:	

Object: **Primary Employer Member Type**
Type: Character
Description: This is the type of customer's primary employer's membership.
Select equivalent: CUS_CURRENT_MEMBERSHIP_INFO_PRIMARY_EMPLOYMENT.NATIONAL_LEVEL
Where equivalent:

Qualification: dimension
List of values: 16d, editable, automatic refresh, not exportable
Security access level: 0
Can be used: in result, in condition, in sort
Object status: show

Object: **Primary Employer's Membership Begin Date**
Type: Date

Description: This is the begin date of the customer's primary employer's membership.
 Select equivalent: CUS_CURRENT_MEMBERSHIP_INFO_PRIMARY_EMPLOYMENT.CYCLE_BEGIN_D
 Where equivalent:

Qualification: dimension
 List of values: 16e, editable, manual refresh, not exportable
 Security access level: 0
 Can be used: in result, in condition, in sort
 Object status: show

Object: **Primary Employer's Membership End Date**
 Type: Date
 Description: This is the end date of the customer's primary employer's membership.
 Select equivalent: CUS_CURRENT_MEMBERSHIP_INFO_PRIMARY_EMPLOYMENT.CYCLE_END_DAT
 Where equivalent:

Qualification: dimension
 List of values: 16f, editable, manual refresh, not exportable
 Security access level: 0
 Can be used: in result, in condition, in sort
 Object status: show

Object: **Primary Employer's Membership Grace Date**
 Type: Date
 Description: This is the grace date of customer's primary employer's membership.
 Select equivalent: CUS_CURRENT_MEMBERSHIP_INFO_PRIMARY_EMPLOYMENT.GRACE_DATE
 Where equivalent:

Qualification: dimension
 List of values: 16g, editable, manual refresh, not exportable
 Security access level: 0
 Can be used: in result, in condition, in sort
 Object status: show

Object: **Primary Employer's Membership Description**
 Type: Character
 Description: This is the description of the customer's primary employer's membership.
 Select equivalent: CUS_CURRENT_MEMBERSHIP_INFO_PRIMARY_EMPLOYMENT.NATIONAL_DESC
 Where equivalent:

Qualification: dimension
 List of values: 16h, editable, manual refresh, not exportable
 Security access level: 0

Can be used: in result, in condition, in sort
 Object status: show

Object: **Primary Employer's Member Since Date**
 Type: Date
 Description: This is the members since date of the customer's primary employer's membership
 Select equivalent: CUS_CURRENT_MEMBERSHIP_
 INFO_PRIMARY_EMPLOYMENT
 .NATIONAL_SINCE_DATE

Where equivalent:

Qualification: dimension
 List of values: 16i, editable, manual refresh, not exportable
 Security access level: 0
 Can be used: in result, in condition, in sort
 Object status: show

Object: **Primary Employer's Chapter 1**
 Type: Character
 Description: This is the description of the customer's primary employer's membership 1st ch
 Select equivalent: CUS_CURRENT_MEMBERSHIP_INFO_PRIMARY_EMPLOYMENT.CHAPTER_DESCR
 Where equivalent:

Qualification: dimension
 List of values: 16j, editable, manual refresh, not exportable
 Security access level: 0
 Can be used: in result, in condition, in sort
 Object status: show

Object: **Primary Employer's Chapter 2**
 Type: Character
 Description: This is the description of the customer's primary employer's membership 2nd ch
 Select equivalent: CUS_CURRENT_MEMBERSHIP_INFO_PRIMARY_EMPLOYMENT.CHAPTER2_DESCR
 Where equivalent:

Qualification: dimension
 List of values: 16k, editable, manual refresh, not exportable
 Security access level: 0
 Can be used: in result, in condition, in sort
 Object status: show

Object: **Primary Employer's Section 1**

Type: Character
 Description: This is the description of the customer's primary employer's membership 1st section
 Select equivalent: CUS_CURRENT_MEMBERSHIP_INFO_PRIMARY_EMPLOYMENT.SECTION_DESCR
 Where equivalent:

Qualification: dimension
 List of values: 16l, editable, manual refresh, not exportable
 Security access level: 0
 Can be used: in result, in condition, in sort
 Object status: show

Object: **Primary Employer's Section 2**
 Type: Character
 Description: This is the description of the customer's primary employer's membership 2nd section
 Select equivalent: CUS_CURRENT_MEMBERSHIP_INFO_PRIMARY_EMPLOYMENT.SECTION2_DESCR
 Where equivalent:

Qualification: dimension
 List of values: 16m, editable, manual refresh, not exportable
 Security access level: 0
 Can be used: in result, in condition, in sort
 Object status: show

Class:	Primary Employer List Demographics
Description:	

Object: **List Demographic Code**
 Type: Character
 Description: This is the list demographic code of the primary employer's demographic information
 Select equivalent: CUS_DEMOGRAPHIC_CODE_DESCR_PRIMARY_EMPLOYER.DEMOGRAPHIC_CODE
 Where equivalent:

Qualification: dimension
 List of values: no
 Security access level: 0
 Can be used: in result, in condition, in sort
 Object status: show

Object: **List Demographic Code Description**
 Type: Character
 Description: This is the description of the list demographic of the primary employer's demographic information

Select equivalent: ographic information.
CUS_DEMOGRAPHIC_CODE_DE
SCR_PRIMARY_EMPLOYER.DE
MOGRAPHIC_CODE_DESCR

Where equivalent:

Qualification: dimension
List of values: no
Security access level: 0
Can be used: in result, in condition, in sort
Object status: show

Object: **List Demographic Subcode**
Type: Character
Description: This is the subcode of the
list demographic of the p
rimary employer's demogra
phic information.

Select equivalent: CUS_DEMOGRAPHIC_CODE_DESCR_PRIMARY_EMPLOYER.DEMOGRAPHIC_SUB
Where equivalent:

Qualification: dimension
List of values: no
Security access level: 0
Can be used: in result, in condition, in sort
Object status: show

Object: **List Demographic Subcode Description**
Type: Character
Description: This is the description of
the subcode of the list d
emographic of the primary
employer's demographic i
nformation.

Select equivalent: CUS_DEMOGRAPHIC_CODE_DE
SCR_PRIMARY_EMPLOYER.DE
MOGRAPHIC_SUBCODE_DESCR

Where equivalent:

Qualification: dimension
List of values: no
Security access level: 0
Can be used: in result, in condition, in sort
Object status: show

Object: **List Demographic Begin Date**
Type: Date
Description: This is the begin date of the primary employer's demographic information.
Select equivalent: CUS_DEMOGRAPHIC_CODE_DESCR_PRIMARY_EMPLOYER.USER_D1
Where equivalent:

Qualification: dimension
List of values: no
Security access level: 0
Can be used: in result, in condition, in sort
Object status: show

Object: **List Demographic End Date**
Type: Date
Description: This is the end date of the ship to primary employer's demographic information.
Select equivalent: CUS_DEMOGRAPHIC_CODE_DESCR_PRIMARY_EMPLOYER.USER_D2
Where equivalent:

Qualification: dimension
List of values: no
Security access level: 0
Can be used: in result, in condition, in sort
Object status: show

Class: Corporate Parent Description: This class holds the Corporate parent info of an individual or a company.
--

Object: **Subsidiary Full Name**
Type: Character
Description: This is the Subsidiary Full Name

Select equivalent: Cus_Relationship_Related_
 Cus_Info_Mkt_List_Corpora
 te_Relationship.RELATED_C
 US_LABEL_NAME

Where equivalent:

Qualification: dimension
List of values: 2bm, editable, manual refresh, not exportable
Security access level: 0
Can be used: in result, in condition, in sort
Object status: show

Object: **Relationship Code**
Type: Character
Description: This is the Donor Corporate Relationship Code

Select equivalent: Cus_Relationship_Related_
Cus_Info_Mkt_List_Corpora
te_Relationship.RELATIONS
HIP_CODE

Where equivalent:

Qualification: dimension
List of values: 2bn, editable, manual refresh, not exportable
Security access level: 0
Can be used: in result, in condition, in sort
Object status: show

Object: **Reciprocal Code**
Type: Character
Description: This is the Donor Corporate Reciprocal Code

Select equivalent: Cus_Relationship_Related_
Cus_Info_Mkt_List_Corpora
te_Relationship.RECIPROCA
L_CODE

Where equivalent:

Qualification: dimension
List of values: 2bo, editable, manual refresh, not exportable
Security access level: 0
Can be used: in result, in condition, in sort
Object status: show

Object: **Relationship Begin Date**
Type: Date
Description: This is the Donor Corporate Relationship Begin Date

Select equivalent: Cus_Relationship_Related_Cus_Info_Mkt_List_Corporate_Relationship.BEGIN_DA

Where equivalent:

Qualification: dimension
 List of values: 2bp, editable, manual refresh, not exportable
 Security access level: 0
 Can be used: in result, in condition, in sort
 Object status: show

Object: **Relationship End Date**
 Type: Date
 Description: This is the Donor Corporate Relationship End Date

Select equivalent: Cus_Relationship_Related_Cus_Info_Mkt_List_Corporate_Relationship.END_DATE

Where equivalent:

Qualification: dimension
 List of values: 2bq, editable, manual refresh, not exportable
 Security access level: 0
 Can be used: in result, in condition, in sort
 Object status: show

Object: **Customer Class Code**
 Type: Character
 Description: This is the Donor Corporate Customer Class Code

Select equivalent: Cus_Relationship_Related_Cus_Info_Mkt_List_Corporate_Relationship.Related_Customer_Class_Code

Where equivalent:

Qualification: dimension
 List of values: 2br, editable, manual refresh, not exportable
 Security access level: 0
 Can be used: in result, in condition, in sort
 Object status: show

Object: **Customer Class Description**
 Type: Character
 Description: This is the description of the Donor Corporate Customer Class.
 Select equivalent: APP_CODE_CUSTOMER_CLASS.DESCR
 Where equivalent:

Qualification: dimension
List of values: 2pc, editable, manual refresh, not exportable
Security access level: 0
Can be used: in result, in condition, in sort
Object status: show

Object: **Record Type**
Type: Character
Description: This is the Donor Corporate Record Type

Select equivalent: Cus_Relationship_Related_
Cus_Info_Mkt_List_Corpora
te_Relationship.Related_C
us_Record_Type

Where equivalent:

Qualification: dimension
List of values: 2bs, editable, manual refresh, not exportable
Security access level: 0
Can be used: in result, in condition, in sort
Object status: show

Object: **Subsidiary Matching Percentage**
Type: Number
Description: This is the Doonor Subsidiary Matching Percentage

Select equivalent: Cus_Relationship_Related_
Cus_Info_Mkt_List_Corpora
te_Relationship.RELATED_C
US_FND_MATCHING_PERCENT

Where equivalent:

Qualification: dimension
List of values: 2bt, editable, manual refresh, not exportable
Security access level: 0
Can be used: in result, in condition, in sort
Object status: show

Object: **Subsidiary Matching Limit**
Type: Number
Description: This is the Donor Subsidiary Matching Limit

Select equivalent: Cus_Relationship_Related_
Cus_Info_Mkt_List_Corpora
te_Relationship.RELATED_C
US_FND_MATCHING_LIMIT

Where equivalent:

Qualification: dimension
List of values: 2bu, editable, manual refresh, not exportable
Security access level: 0
Can be used: in result, in condition, in sort
Object status: show

Object: **Subsidiary Customer ID**
Type: Character
Description: This is the Donor Subsidiary Customer ID

Select equivalent: Cus_Relationship_Related_
Cus_Info_Mkt_List_Corpora
te_Relationship.RELATED_C
US_CusMastSubID

Where equivalent:

Qualification: dimension
List of values: 2bv, editable, manual refresh, not exportable
Security access level: 0
Can be used: in result, in condition, in sort
Object status: show

Object: **Subsidiary Master Customer ID**
Type: Character
Description: This is the Donor Subsidiary Master Customer ID

Select equivalent: Cus_Relationship_Related_
Cus_Info_Mkt_List_Corpora
te_Relationship.RELATED_M
ASTER_CUSTOMER_ID

Where equivalent:

Qualification: dimension
List of values: 2bw, editable, manual refresh, not exportable
Security access level: 0

Can be used: in result, in condition, in sort
 Object status: show

Object: **Subsidiary Sub Customer ID**
 Type: Number
 Description: This is the Donor Subsidiary Sub Customer ID

Select equivalent: Cus_Relationship_Related_
 Cus_Info_Mkt_List_Corpora
 te_Relationship.RELATED_S
 UB_CUSTOMER_ID

Where equivalent:

Qualification: dimension
 List of values: 2bx, editable, manual refresh, not exportable
 Security access level: 0
 Can be used: in result, in condition, in sort
 Object status: show

Object: **Is the Subsidiary a Foundation?**
 Type: Character
 Description: Flag to identify if the Subsidiary a Foundation

Select equivalent: Cus_Relationship_Related_
 Cus_Info_Mkt_List_Corpora
 te_Relationship.Related_C
 us_Foundation_Flag

Where equivalent:

Qualification: dimension
 List of values: 2by, editable, manual refresh, not exportable
 Security access level: 0
 Can be used: in result, in condition, in sort
 Object status: show

Object: **Does the Subsidiary Match Donation?**
 Type: Character
 Description: Flag to identify if the Subsidiary Match Donation

Select equivalent: Cus_Relationship_Related_
 Cus_Info_Mkt_List_Corpora

te_Relationship.Related_C
us_Fnd_Matching_Flag

Where equivalent:

Qualification: dimension
List of values: 2c0, editable, manual refresh, not exportable
Security access level: 0
Can be used: in result, in condition, in sort
Object status: show

Class:	Demographics Info
Description:	This class holds the info regarding the demographics of the customer

Object: **Customer Class Code**
Type: Character
Description: This is the customer class code
Select equivalent: CUSTOMER_MKT_LIST_INFO.CUSTOMER_CLASS_CODE
Where equivalent:

Qualification: dimension
List of values: no
Security access level: 0
Can be used: in result, in condition, in sort
Object status: show

Object: **Customer Class Description**
Type: Character
Description: This is the description of the customer class.
Select equivalent: APP_CODE_CUSTOMER_CLASS_CUSTOMER.DESCR
Where equivalent:

Qualification: dimension
List of values: 2pd, editable, manual refresh, not exportable
Security access level: 0
Can be used: in result, in condition, in sort
Object status: show

Object: **Customer Status Code**
Type: Character
Description: This is the customer status code
Select equivalent: CUSTOMER_MKT_LIST_INFO.CUSTOMER_STATUS_CODE
Where equivalent:

Qualification: dimension
List of values: no
Security access level: 0
Can be used: in result, in condition, in sort
Object status: show

Object: **Customer Status Description**
Type: Character
Description: This is the description of the custome status.
Select equivalent: APP_CODE_CUSTOMER_STATUS_CUSTOMER.DESCR
Where equivalent:

Qualification: dimension
List of values: 2pe, editable, manual refresh, not exportable
Security access level: 0
Can be used: in result, in condition, in sort
Object status: show

Object: **Customer Status Date**
Type: Date
Description: This is the date when the customer status last changed.
Select equivalent: CUSTOMER_MKT_LIST_INFO.CUSTOMER_STATUS_DATE
Where equivalent:

Qualification: dimension
List of values: no
Security access level: 0
Can be used: in result, in condition, in sort
Object status: show

Object: **Primary Job Title**
Type: Character
Description: This is the primary job title
Select equivalent: CUSTOMER_MKT_LIST_INFO.PRIMARY_JOB_TITLE
Where equivalent:

Qualification: dimension
List of values: no
Security access level: 0
Can be used: in result, in condition, in sort
Object status: show

Object: **Job Function Code**
Type: Character
Description: This is the primary job function
Select equivalent: CUSTOMER_MKT_LIST_INFO.JOB_FUNCTION_CODE
Where equivalent:

Qualification: dimension
List of values: no
Security access level: 0
Can be used: in result, in condition, in sort
Object status: show

Object: **Gender Code**
Type: Character
Description: This is the gender code
Select equivalent: CUSTOMER_MKT_LIST_INFO.GENDER_CODE
Where equivalent:

Qualification: dimension
List of values: no
Security access level: 0
Can be used: in result, in condition, in sort
Object status: show

Object: **Ethnicity Code**
Type: Character
Description: This is the ethnicity code
Select equivalent: CUSTOMER_MKT_LIST_INFO.ETHNICITY_CODE
Where equivalent:

Qualification: dimension
List of values: no
Security access level: 0
Can be used: in result, in condition, in sort
Object status: show

Object: **Birthdate**
Type: Date
Description: This is the birthdate
Select equivalent: CUSTOMER_MKT_LIST_INFO.BIRTH_DATE
Where equivalent:

Qualification: dimension

List of values: no
 Security access level: 0
 Can be used: in result, in condition, in sort
 Object status: show

Object: **Age**
 Type: Number
 Description: This is the age of the customer.
 Select equivalent:

```
CASE WHEN cast(datepart(m
,getdate()) as int) > cast
(datepart(m,CUSTOMER_MKT
_LIST_INFO.BIRTH_DATE) a
s int)
THEN cast(datediff(yyyy,CUSTOMER_MKT_LIST_INFO.BIRTH_DATE,getdate()) a
s int)
WHEN cast(datepart(m,getd
ate()) as int) = cast(date
part(m,CUSTOMER_MKT_LIST
_INFO.BIRTH_DATE) as int)
AND datepart(d,getdate()) >= datepart(d,CUSTOMER_MKT_LIST_INFO.BIRTH
_DATE,getdate())
THEN cast(datediff(yyyy,CUSTOMER_MKT_LIST_INFO.BIRTH_DATE,getdate()) a
s int)
ELSE cast(datediff(yyyy,C
USTOMER_MKT_LIST_INFO.BI
RTH_DATE,getdate()) as in
t) -1
END
```

Where equivalent:

Qualification: measure
 Aggregate function: None
 List of values: no
 Security access level: 0
 Can be used: in result, in condition, in sort
 Object status: show

Class:	List Demographics
Description:	This Class holds the list demographics details of the customer

Object: **List Demographic Code**
 Type: Character
 Description: This is the list demographic code
 Select equivalent: CUS_DEMOGRAPHIC_CODE_DESCR_MKT_LIST_INFO.DEMOGRAPHIC_CODE
 Where equivalent:
 Qualification: dimension

List of values: no
 Security access level: 0
 Can be used: in result, in condition, in sort
 Object status: show

Object: **List Demographic Code Description**
 Type: Character
 Description: This is the description of the list demographic code
 Select equivalent: CUS_DEMOGRAPHIC_CODE_DESCR_MKT_LIST_INFO.DEMOGRAPHIC_CODE_DE
 Where equivalent:

Qualification: dimension
 List of values: no
 Security access level: 0
 Can be used: in result, in condition, in sort
 Object status: show

Object: **List Demographic Subcode**
 Type: Character
 Description: This is the subcode of the list demographic subcode
 Select equivalent: CUS_DEMOGRAPHIC_CODE_DESCR_MKT_LIST_INFO.DEMOGRAPHIC_SUBCODE
 Where equivalent:

Qualification: dimension
 List of values: no
 Security access level: 0
 Can be used: in result, in condition, in sort
 Object status: show

Object: **List Demographic Subcode Description**
 Type: Character
 Description: This is the description of the list demographic subcode
 Select equivalent: CUS_DEMOGRAPHIC_CODE_DE
 SCR_MKT_LIST_INFO.DEMOG
 RAPHIC_SUBCODE_DESCR

Where equivalent:

Qualification: dimension
 List of values: no
 Security access level: 0
 Can be used: in result, in condition, in sort
 Object status: show

Object: **List Demographic Begin Date**
Type: Date
Description: This is the begin date of the list demographics
Select equivalent: CUS_DEMOGRAPHIC_CODE_DESCR_MKT_LIST_INFO.USER_D1
Where equivalent:

Qualification: dimension
List of values: no
Security access level: 0
Can be used: in result, in condition, in sort
Object status: show

Object: **List Demographic End Date**
Type: Date
Description: This is the end date of the list demographics
Select equivalent: CUS_DEMOGRAPHIC_CODE_DESCR_MKT_LIST_INFO.USER_D2
Where equivalent:

Qualification: dimension
List of values: no
Security access level: 0
Can be used: in result, in condition, in sort
Object status: show

Class: Customer Specialty Description: This class holds the speciality of the customer
--

Object: **Specialty Description**
Type: Character
Description: This is the description of the specialty
Select equivalent: CUS_SPECIALTY_MKT_LIST.COMMENTS
Where equivalent:

Qualification: dimension
List of values: no
Security access level: 0
Can be used: in result, in condition, in sort
Object status: show

Object: **Specialty Level Code**
Type: Character
Description: This is the specialty level code
Select equivalent: CUS_SPECIALTY_MKT_LIST.SPECIALTY_STATUS_CODE

Where equivalent:

Qualification: dimension
 List of values: no
 Security access level: 0
 Can be used: in result, in condition, in sort
 Object status: show

Object: **Specialty Level Description**
 Type: Character
 Description: This is the description of the specialty level code
 Select equivalent: CUS_SPECIALTY_MKT_LIST.COMMENTS
 Where equivalent:

Qualification: dimension
 List of values: no
 Security access level: 0
 Can be used: in result, in condition, in sort
 Object status: show

Class:	Customer Education
Description:	This class holds the education details of the customer

Object: **Prog Degree Code**
 Type: Character
 Description: This is the Program degree of the customer.
 Select equivalent: CUS_EDUCATION.PROG_DEGREE_CODE
 Where equivalent:

Qualification: dimension
 List of values: 2lo, editable, manual refresh, not exportable
 Security access level: 0
 Can be used: in result, in condition, in sort
 Object status: show

Object: **Prog Degree Description**
 Type: Character
 Description: This is the description of the Program degree of the customer.
 Select equivalent: APP_CODE_CUS_EDUCATION.DESCR
 Where equivalent:

Qualification: dimension
 List of values: 2pf, editable, manual refresh, not exportable
 Security access level: 0

Can be used: in result, in condition, in sort
Object status: show

Object: **Prog Type Code**
Type: Character
Description: This the program type of the customer.
Select equivalent: CUS_EDUCATION.PROG_TYPE_CODE
Where equivalent:

Qualification: dimension
List of values: 2lp, editable, manual refresh, not exportable
Security access level: 0
Can be used: in result, in condition, in sort
Object status: show

Object: **Prog Type Description**
Type: Character
Description: This is the description of the program type of the customer.
Select equivalent: APP_CODE_PROG_TYPE.DESCR
Where equivalent:

Qualification: dimension
List of values: 2pg, editable, manual refresh, not exportable
Security access level: 0
Can be used: in result, in condition, in sort
Object status: show

Object: **Institution Name**
Type: Character
Description: This is institution name where the customer got his program degree from.
Select equivalent: CUS_EDUCATION.INSTITUTION_NAME
Where equivalent:

Qualification: dimension
List of values: 2lr, editable, manual refresh, not exportable
Security access level: 0
Can be used: in result, in condition, in sort
Object status: show

Object: **Begin Date**
Type: Date
Description: This is the program begin date of the customer.

Select equivalent: CUS_EDUCATION.BEGIN_DATE
Where equivalent:

Qualification: dimension
List of values: 2ls, editable, manual refresh, not exportable
Security access level: 0
Can be used: in result, in condition, in sort
Object status: show

Object: **End Date**
Type: Date
Description: This is the program end date of the customer.
Select equivalent: CUS_EDUCATION.END_DATE
Where equivalent:

Qualification: dimension
List of values: 2lt, editable, manual refresh, not exportable
Security access level: 0
Can be used: in result, in condition, in sort
Object status: show

Class:	Customer Opt In's
Description:	

Object: **Option Type Code**
Type: Character
Description:

Select equivalent: CUS_OPT_IN.OPTION_TYPE_CODE
Where equivalent:

Qualification: dimension
List of values: 2q4, editable, manual refresh, not exportable
Security access level: 0
Can be used: in result, in condition, in sort
Object status: show

Object: **Option Short Name**
Type: Character
Description:

Select equivalent: CUS_OPT_IN.OPTION_SHORT_NAME
Where equivalent:

Qualification: dimension
List of values: 2q5, editable, manual refresh, not exportable
Security access level: 0
Can be used: in result, in condition, in sort
Object status: show

Object: **Option Short Subname**
Type: Character
Description:

Select equivalent: CUS_OPT_IN.OPTION_SHORT_SUBNAME
Where equivalent:

Qualification: dimension
List of values: 2q6, editable, manual refresh, not exportable
Security access level: 0
Can be used: in result, in condition, in sort
Object status: show

Object: **Option Descr**
Type: Character
Description:

Select equivalent: CUS_OPT_IN.OPTION_DESCR
Where equivalent:

Qualification: dimension
List of values: 2q8, editable, manual refresh, not exportable
Security access level: 0
Can be used: in result, in condition, in sort
Object status: show

Object: **Opted In Flag**
Type: Character
Description:

Select equivalent: CUS_OPT_IN.OPTED_IN_FLAG
Where equivalent:

Qualification: dimension
List of values: 2q9, editable, manual refresh, not exportable
Security access level: 0

Can be used: in result, in condition, in sort
Object status: show

Object: **Opted In Date**

Type: Date

Description:

Select equivalent: CUS_OPT_IN.OPTED_IN_DATE

Where equivalent:

Qualification: dimension

List of values: 2qa, editable, manual refresh, not exportable

Security access level: 0

Can be used: in result, in condition, in sort

Object status: show

Object: **Opt In Expiration Date**

Type: Date

Description:

Select equivalent: CUS_OPT_IN.OPT_IN_EXPIRATION_DATE

Where equivalent:

Qualification: dimension

List of values: 2qb, editable, manual refresh, not exportable

Security access level: 0

Can be used: in result, in condition, in sort

Object status: show

Object: **Opted Out Date**

Type: Date

Description:

Select equivalent: CUS_OPT_IN.OPTED_OUT_DATE

Where equivalent:

Qualification: dimension

List of values: 2qc, editable, manual refresh, not exportable

Security access level: 0

Can be used: in result, in condition, in sort

Object status: show

Object: **Opt Out Reason Code**
Type: Character
Description:

Select equivalent: CUS_OPT_IN.OPT_OUT_REASON_CODE
Where equivalent:

Qualification: dimension
List of values: 2qd, editable, manual refresh, not exportable
Security access level: 0
Can be used: in result, in condition, in sort
Object status: show

Object: **Communication Choice Code**
Type: Character
Description:

Select equivalent: CUS_OPT_IN.COMMUNICATION_CHOICE_CODE
Where equivalent:

Qualification: dimension
List of values: 2qe, editable, manual refresh, not exportable
Security access level: 0
Can be used: in result, in condition, in sort
Object status: show

Object: **Preferred Communication Method Code**
Type: Character
Description:

Select equivalent: CUS_OPT_IN.PREFERRED_COMMUNICATION_METHOD_CODE
Where equivalent:

Qualification: dimension
List of values: 2qf, editable, manual refresh, not exportable
Security access level: 0
Can be used: in result, in condition, in sort
Object status: show

Object: **Email Fax Use Code**
Type: Character
Description:

Select equivalent: CUS_OPT_IN.EMAIL_FAX_USE_CODE
Where equivalent:

Qualification: dimension
List of values: 2qg, editable, manual refresh, not exportable
Security access level: 0
Can be used: in result, in condition, in sort
Object status: show

Object: **Preferred Communication Seq**
Type: Number
Description:

Select equivalent: CUS_OPT_IN.PREFERRED_COMMUNICATION_SEQ
Where equivalent:

Qualification: dimension
List of values: 2qh, editable, manual refresh, not exportable
Security access level: 0
Can be used: in result, in condition, in sort
Object status: show

Object: **Address Use Code**
Type: Character
Description:

Select equivalent: CUS_OPT_IN.ADDRESS_USE_CODE
Where equivalent:

Qualification: dimension
List of values: 2qi, editable, manual refresh, not exportable
Security access level: 0
Can be used: in result, in condition, in sort
Object status: show

Object: **Preferred Address Type Code**
Type: Character
Description:

Select equivalent: CUS_OPT_IN.PREFERRED_ADDRESS_TYPE_CODE
Where equivalent:

Qualification: dimension

List of values: 2qk, editable, manual refresh, not exportable
 Security access level: 0
 Can be used: in result, in condition, in sort
 Object status: show

Object: **Comments**
 Type: Character
 Description:

Select equivalent: CUS_OPT_IN.COMMENTS
 Where equivalent:

Qualification: dimension
 List of values: 2ql, editable, manual refresh, not exportable
 Security access level: 0
 Can be used: in result, in condition, in sort
 Object status: show

Class: Communication Info
Description: This class holds the customers communication info.

Object: **Primary Fax**
 Type: Character
 Description: This is the customers primary fax
 Select equivalent: CUSTOMER_MKT_LIST_INFO.PRIMARY_FAX
 Where equivalent:

Qualification: dimension
 List of values: no
 Security access level: 0
 Can be used: in result, in condition, in sort
 Object status: show

Object: **Primary Phone**
 Type: Character
 Description: This is the customers primary phone
 Select equivalent: CUSTOMER_MKT_LIST_INFO.PRIMARY_PHONE
 Where equivalent:

Qualification: dimension
 List of values: no
 Security access level: 0
 Can be used: in result, in condition, in sort
 Object status: show

Object: **Primary Email Address**
Type: Character
Description: This is the customers primary email address
Select equivalent: CUSTOMER_MKT_LIST_INFO.PRIMARY_EMAIL_ADDRESS
Where equivalent:

Qualification: dimension
List of values: no
Security access level: 0
Can be used: in result, in condition, in sort
Object status: show

Class: Communication Rules Description: This class holds the customers communication rules
--

Object: **Allow Phone?**
Type: Character
Description: This indicates if the customer allows any phone solicitation.
Select equivalent: CUSTOMER_MKT_LIST_INFO.ALLOW_PHONE_FLAG
Where equivalent:

Qualification: dimension
List of values: no
Security access level: 0
Can be used: in result, in condition, in sort
Object status: show

Object: **Allow Fax?**
Type: Character
Description: This indicates if the customer allows any fax solicitation.
Select equivalent: CUSTOMER_MKT_LIST_INFO.ALLOW_EMAIL_FLAG
Where equivalent:

Qualification: dimension
List of values: no
Security access level: 0
Can be used: in result, in condition, in sort
Object status: show

Object: **Allow Label Sales?**
Type: Character
Description: This indicates if the customer allows the organization to sell their name.

Select equivalent: CUSTOMER_MKT_LIST_INFO.ALLOW_FAX_FLAG
Where equivalent:

Qualification: dimension
List of values: no
Security access level: 0
Can be used: in result, in condition, in sort
Object status: show

Object: **Allow Solicitation?**
Type: Character
Description: This indicates if the customer allows any type of solicitation.
Select equivalent: CUSTOMER_MKT_LIST_INFO.ALLOW_LABEL_SALES_FLAG
Where equivalent:

Qualification: dimension
List of values: no
Security access level: 0
Can be used: in result, in condition, in sort
Object status: show

Object: **Allow Internal Mail?**
Type: Character
Description: This indicates if the customer allows any internal mail.
Select equivalent: CUSTOMER_MKT_LIST_INFO.ALLOW_SOLICITATION_FLAG
Where equivalent:

Qualification: dimension
List of values: no
Security access level: 0
Can be used: in result, in condition, in sort
Object status: show

Object: **Allow System Notification?**
Type: Character
Description:
Select equivalent: CUSTOMER_MKT_LIST_INFO.ALLOW_SYSTEM_NOTIFICATION_FLAG
Where equivalent:

Qualification: dimension
List of values: 2px, editable, manual refresh, not exportable
Security access level: 0

Can be used: in result, in condition, in sort
 Object status: show

Class:	Contact Tracking
Description:	This class holds info regarding contact tracking and as well as other activities.

Object: **Contact Tracking Market Code**
 Type: Character
 Description: This is the contact tracking market code.
 Select equivalent: CUS_ACTIVITY.MARKET_CODE

Where equivalent:

Qualification: dimension
 List of values: 2fi, editable, manual refresh, not exportable
 Security access level: 0
 Can be used: in result, in condition, in sort
 Object status: show

Object: **Contact Tracking List Code**
 Type: Character
 Description: This is the contact tracking list code.
 Select equivalent: CUS_ACTIVITY.LIST_CODE

Where equivalent:

Qualification: dimension
 List of values: 2fj, editable, manual refresh, not exportable
 Security access level: 0
 Can be used: in result, in condition, in sort
 Object status: show

Object: **Contact Tracking Key Code**
 Type: Character
 Description: This is the contact tracking key code.
 Select equivalent: CUS_ACTIVITY.KEY_CODE

Where equivalent:

Qualification: dimension
 List of values: 2fh, editable, manual refresh, not exportable
 Security access level: 0
 Can be used: in result, in condition, in sort
 Object status: show

Object: **Contact Tracking Call Type**
Type: Character
Description: This is the contact tracking call type.
Select equivalent: CUS_ACTIVITY.CALL_TYPE_CODE

Where equivalent:

Qualification: dimension
List of values: 06k, editable, manual refresh, not exportable
Security access level: 0
Can be used: in result, in condition, in sort
Object status: show

Object: **Contact Tracking Call Type Description**
Type: Character
Description: This is the description of the call type for contact tracking.
Select equivalent: APP_CODE_CALL_TYPE_CODE.DESCR

Where equivalent:

Qualification: dimension
List of values: no
Security access level: 0
Can be used: in result, in condition, in sort
Object status: show

Object: **Contact Tracking Call Topic Code**
Type: Character
Description: This is the call topic code for the contact.
Select equivalent: CUS_ACTIVITY.CALL_TOPIC_CODE

Where equivalent:

Qualification: dimension
List of values: 06l, editable, manual refresh, not exportable
Security access level: 0
Can be used: in result, in condition, in sort
Object status: show

Object: **Contact Tracking Call Topic Description**

Type: Character
Description: This is the description of the call topic for the contact.
Select equivalent: APP_CODE_CALL_TYPE_CODE.DESCR

Where equivalent:

Qualification: dimension
List of values: no
Security access level: 0
Can be used: in result, in condition, in sort
Object status: show

Object: **Contact Tracking Call Topic Subcode**
Type: Character
Description: This is the call topic subcode.
Select equivalent: CUS_ACTIVITY.CALL_TOPIC_SUBCODE

Where equivalent:

Qualification: dimension
List of values: 06m, editable, manual refresh, not exportable
Security access level: 0
Can be used: in result, in condition, in sort
Object status: show

Object: **Contact Tracking Call Topic Subcode Description**
Type: Character
Description: This is description for the call topic subcode.
Select equivalent: APP_SUBCODE_CALL_TOPIC_SUBCODE.DESCR

Where equivalent:

Qualification: dimension
List of values: 0ja, editable, manual refresh, not exportable
Security access level: 0
Can be used: in result, in condition, in sort
Object status: show

Object: **Contact Tracking Activity Text**
Type: Character
Description: This is the contact summary.
Select equivalent: CUS_ACTIVITY.ACTIVITY_TEXT

Where equivalent:

Qualification: dimension
 List of values: no
 Security access level: 0
 Can be used: in result, in condition, in sort
 Object status: show

Object: **Contact Tracking Person Contacted Name**
 Type: Character
 Description: This is the name of the person contacted.
 Select equivalent: CUS_ACTIVITY.PERSON_CONTACTED

Where equivalent:

Qualification: dimension
 List of values: 2ff, editable, manual refresh, not exportable
 Security access level: 0
 Can be used: in result, in condition, in sort
 Object status: show

Object: **Customer Contacted Customer ID**
 Type: Character
 Description: This is the concatenation of the contacted master customer id and sub customer
 Select equivalent: CASE WHEN CUS_ACTIVITY.S
 UB_CUSTOMER_ID = 0 THEN
 CUS_ACTIVITY.MASTER_CUST
 OMER_ID ELSE CUS_ACTIVIT
 Y.MASTER_CUSTOMER_ID + '
 -' + CONVERT(varchar, CUS
 _ACTIVITY.SUB_CUSTOMER_I
 D) END

Where equivalent:

Qualification: dimension
 List of values: 2fg, editable, manual refresh, not exportable
 Security access level: 0
 Can be used: in result, in condition, in sort
 Object status: show

Object: **Customer Contacted Master Customer ID**
 Type: Character
 Description: This is the contacted customers master customer id.

Select equivalent: CUS_ACTIVITY.MASTER_CUSTOMER_ID
Where equivalent:

Qualification: dimension
List of values: no
Security access level: 0
Can be used: in result, in condition, in sort
Object status: show

Object: **Customer Contacted Sub Customer ID**
Type: Number
Description: This is the contacted customers sub customer id.
Select equivalent: CUS_ACTIVITY.SUB_CUSTOMER_ID

Where equivalent:

Qualification: dimension
List of values: no
Security access level: 0
Can be used: in result, in condition, in sort
Object status: show

Object: **Contact Tracking Staff Assigned**
Type: Character
Description: This is the staff assigned for the contact.
Select equivalent: CUS_ACTIVITY.STAFF_USER_ID

Where equivalent:

Qualification: dimension
List of values: no
Security access level: 0
Can be used: in result, in condition, in sort
Object status: show

Object: **Contact Tracking Followup Date**
Type: Date
Description: This is the followup date for the contact.
Select equivalent: CUS_ACTIVITY.FOLLOWUP_DATE

Where equivalent:

Qualification: dimension

List of values: no
Security access level: 0
Can be used: in result, in condition, in sort
Object status: show

Object: **Contact Tracking Followup Action Date**
Type: Date
Description: This is the followup action date for the contact.
Select equivalent: CUS_ACTIVITY.FOLLOWUP_ACTION_DATE

Where equivalent:

Qualification: dimension
List of values: no
Security access level: 0
Can be used: in result, in condition, in sort
Object status: show

Object: **Is the contact tracking issue resolved?**
Type: Character
Description: This indicated if the contacts issues has been resolved or not.
Select equivalent: CUS_ACTIVITY.RESOLVED_FLAG

Where equivalent:

Qualification: dimension
List of values: no
Security access level: 0
Can be used: in result, in condition, in sort
Object status: show

Object: **Contact Tracking Resolved Date**
Type: Date
Description: The date when the contacts issue was resolved.
Select equivalent: CUS_ACTIVITY.RESOLVED_DATE

Where equivalent:

Qualification: dimension
List of values: no
Security access level: 0
Can be used: in result, in condition, in sort
Object status: show

Object: **Contact Tracking Comments**
Type: Long text
Description: This is the comments of the contact.
Select equivalent: CUS_ACTIVITY.COMMENTS
Where equivalent:

Qualification: dimension
List of values: no
Security access level: 0
Can be used: in result, in condition, in sort
Object status: show

Class: Other Activites Description: This class holds info regarding other activites other than contat tracking.

Object: **Market Code**
Type: Character
Description:

Select equivalent: CUS_ACTIVITY_MARKETING_RELATED_CUSTOMER.MARKET_CODE
Where equivalent:

Qualification: dimension
List of values: 2eh, editable, manual refresh, not exportable
Security access level: 0
Can be used: in result, in condition, in sort
Object status: show

Object: **List Code**
Type: Character
Description:

Select equivalent: CUS_ACTIVITY_MARKETING_RELATED_CUSTOMER.LIST_CODE
Where equivalent:

Qualification: dimension
List of values: 2ei, editable, manual refresh, not exportable
Security access level: 0
Can be used: in result, in condition, in sort
Object status: show

Object: **Key Code**

Type: Character
 Description:

Select equivalent: CUS_ACTIVITY_MARKETING_RELATED_CUSTOMER.KEY_CODE
 Where equivalent:

Qualification: dimension
 List of values: 2eg, editable, manual refresh, not exportable
 Security access level: 0
 Can be used: in result, in condition, in sort
 Object status: show

Object: **Customer ID**
 Type: Character
 Description:

Select equivalent: CASE WHEN CUS_ACTIVITY_M
 ARKETING_RELATED_CUSTOM
 ER.SUB_CUSTOMER_ID = 0 T
 HEN CUS_ACTIVITY_MARKETI
 NG_RELATED_CUSTOMER.MAS
 TER_CUSTOMER_ID ELSE CUS
 _ACTIVITY_MARKETING_RELA
 TED_CUSTOMER.MASTER_CUS
 TOMER_ID + '-' + CONVERT
 (varchar, CUS_ACTIVITY_MA
 RKETING_RELATED_CUSTOME
 R.SUB_CUSTOMER_ID) END

Where equivalent:

Qualification: dimension
 List of values: 211, editable, manual refresh, not exportable
 Security access level: 0
 Can be used: in result, in condition, in sort
 Object status: show

Object: **Master Customer ID**
 Type: Character
 Description:

Select equivalent: CUS_ACTIVITY_MARKETING_RELATED_CUSTOMER.MASTER_CUSTOMER_ID
 Where equivalent:

Qualification: dimension

List of values: 212, editable, manual refresh, not exportable
Security access level: 0
Can be used: in result, in condition, in sort
Object status: show

Object: **Sub Customer ID**
Type: Number
Description:

Select equivalent: CUS_ACTIVITY_MARKETING_RELATED_CUSTOMER.SUB_CUSTOMER_ID

Where equivalent:

Qualification: dimension
List of values: 213, editable, manual refresh, not exportable
Security access level: 0
Can be used: in result, in condition, in sort
Object status: show

Object: **Customer Name**
Type: Character
Description:

Select equivalent: CUSTOMER_MKT_LIST_INFO.LABEL_NAME

Where equivalent:

Qualification: dimension
List of values: 214, editable, manual refresh, not exportable
Security access level: 0
Can be used: in result, in condition, in sort
Object status: show

Object: **Prospect ID**
Type: Character
Description:

Select equivalent: CUS_ACTIVITY_MARKETING_RELATED_CUSTOMER.PROSPECT_ID

Where equivalent:

Qualification: dimension
List of values: 215, editable, manual refresh, not exportable
Security access level: 0
Can be used: in result, in condition, in sort

Object status: show

Object: **Prospect Name**

Type: Character

Description:

Select equivalent: MKT_PROSPECT_MARKETING_RELATED_CUSTOMER.LABEL_NAME

Where equivalent:

Qualification: dimension

List of values: 216, editable, manual refresh, not exportable

Security access level: 0

Can be used: in result, in condition, in sort

Object status: show

Object: **Activity Date**

Type: Date

Description: This is the activity date.

Select equivalent: CUS_ACTIVITY_MARKETING_RELATED_CUSTOMER.ACTIVITY_DATE

Where equivalent:

Qualification: dimension

List of values: no

Security access level: 0

Can be used: in result, in condition, in sort

Object status: show

Object: **Activity Code**

Type: Character

Description: This is the activity code.

Select equivalent: CUS_ACTIVITY_MARKETING_RELATED_CUSTOMER.ACTIVITY_CODE

Where equivalent:

Qualification: dimension

List of values: 11y, editable, automatic refresh, not exportable

Security access level: 0

Can be used: in result, in condition, in sort

Object status: show

Object: **Activity Description**

Type: Character

Description:

Select equivalent: APP_CODE_CUS_ACTIVITY_CODE.DESCR
Where equivalent:

Qualification: dimension
List of values: 2fe, editable, manual refresh, not exportable
Security access level: 0
Can be used: in result, in condition, in sort
Object status: show

Object: **Activity Subcode**
Type: Character
Description: This is the activity subcode.
Select equivalent: CUS_ACTIVITY_MARKETING_RELATED_CUSTOMER.ACTIVITY_SUBCODE
Where equivalent:

Qualification: dimension
List of values: 120, editable, automatic refresh, not exportable
Security access level: 0
Can be used: in result, in condition, in sort
Object status: show

Object: **Order Number Line Number**
Type: Character
Description: This is the concatenation of the order number and the order line number of the order for which activity is created.

Select equivalent: CUS_ACTIVITY_MARKETING_RELATED_CUSTOMER.ORDER_NO + '-' + convert(varchar, CUS_ACTIVITY_MARKETING_RELATED_CUSTOMER.ORDER_LINE_NO)

Where equivalent:

Qualification: dimension
List of values: no
Security access level: 0
Can be used: in result, in condition, in sort
Object status: show

Object: **Order Number**
 Type: Character
 Description: This is the order number of the order for which activity is created.
 Select equivalent: CUS_ACTIVITY_MARKETING_RELATED_CUSTOMER.ORDER_NO
 Where equivalent:

Qualification: dimension
 List of values: no
 Security access level: 0
 Can be used: in result, in condition, in sort
 Object status: show

Object: **Order Line Number**
 Type: Number
 Description: This is the order line number of the order for which activity is created.
 Select equivalent: CUS_ACTIVITY_MARKETING_RELATED_CUSTOMER.ORDER_LINE_NO
 Where equivalent:

Qualification: dimension
 List of values: no
 Security access level: 0
 Can be used: in result, in condition, in sort
 Object status: show

Object: **Subsystem**
 Type: Character
 Description: This is the subsystem for which activity is generated.
 Select equivalent: CUS_ACTIVITY_MARKETING_RELATED_CUSTOMER.SUBSYSTEM
 Where equivalent:

Qualification: dimension
 List of values: no
 Security access level: 0
 Can be used: in result, in condition, in sort
 Object status: show

Object: **Parent Product**
 Type: Character
 Description: This is the parent product of the order line item for which activity is being created.
 Select equivalent: CUS_ACTIVITY_MARKETING_RELATED_CUSTOMER.PARENT_PRODUCT
 Where equivalent:

Qualification: dimension

List of values: no
 Security access level: 0
 Can be used: in result, in condition, in sort
 Object status: show

Object: **Product Code**
 Type: Character
 Description: This is the product code of the order line item for which activity is being created.
 Select equivalent: CUS_ACTIVITY_MARKETING_RELATED_CUSTOMER.PRODUCT_CODE
 Where equivalent:

Qualification: dimension
 List of values: 126, editable, automatic refresh, not exportable
 Security access level: 0
 Can be used: in result, in condition, in sort
 Object status: show

Object: **Rate Structure**
 Type: Character
 Description: This is the rate structure of the order line item for which activity is being created.
 Select equivalent: CUS_ACTIVITY_MARKETING_RELATED_CUSTOMER.RATE_STRUCTURE
 Where equivalent:

Qualification: dimension
 List of values: no
 Security access level: 0
 Can be used: in result, in condition, in sort
 Object status: show

Object: **Rate Code**
 Type: Character
 Description: This is the rate code of the order line item for which activity is being created.
 Select equivalent: CUS_ACTIVITY_MARKETING_RELATED_CUSTOMER.RATE_CODE
 Where equivalent:

Qualification: dimension
 List of values: 128, editable, automatic refresh, not exportable
 Security access level: 0
 Can be used: in result, in condition, in sort
 Object status: show

Object: **Order Quantity**

Type: Number
 Description: This is the order quantity of the order line item for which activity is being created.
 Select equivalent: CUS_ACTIVITY_MARKETING_RELATED_CUSTOMER.ORDER_QTY
 Where equivalent:

Qualification: measure
 Aggregate function: Sum
 List of values: no
 Security access level: 0
 Can be used: in result, in condition, in sort
 Object status: show

Object: **Base Total Amount**
 Type: Number
 Description: This is the base total amount of the order line item for which activity is being created.
 Select equivalent: CUS_ACTIVITY_MARKETING_RELATED_CUSTOMER.BASE_TOTAL_AMOUNT
 Where equivalent:

Qualification: measure
 Aggregate function: Sum
 List of values: no
 Security access level: 0
 Can be used: in result, in condition, in sort
 Object status: show

Object: **Comments**
 Type: Long text
 Description: These are the activity comments.
 Select equivalent: CUS_ACTIVITY_MARKETING_RELATED_CUSTOMER.COMMENTS
 Where equivalent:

Qualification: dimension
 List of values: no
 Security access level: 0
 Can be used: in result, in condition, in sort
 Object status: show

Class:	Customer Modification & Creation Date
Description:	

Object: **Customer Creation Date**
 Type: Date
 Description: This is the customers creation date.

Select equivalent: CUSTOMER_MKT_LIST_INFO.ADDDATE
Where equivalent:

Qualification: dimension
List of values: 2ft, editable, manual refresh, not exportable
Security access level: 0
Can be used: in result, in condition, in sort
Object status: show

Object: **Customer Created Operator**
Type: Character
Description: This is the operator who added the customer.
Select equivalent: CUSTOMER_MKT_LIST_INFO.ADDOPER
Where equivalent:

Qualification: dimension
List of values: 2p0, editable, manual refresh, not exportable
Security access level: 0
Can be used: in result, in condition, in sort
Object status: show

Object: **Customer Modified Date**
Type: Date
Description: This is the customers modified date.
Select equivalent: CUSTOMER_MKT_LIST_INFO.MODDATE
Where equivalent:

Qualification: dimension
List of values: 2fu, editable, manual refresh, not exportable
Security access level: 0
Can be used: in result, in condition, in sort
Object status: show

Object: **Customer Modified Operator**
Type: Character
Description: This is the operator who modified the customer.
Select equivalent: CUSTOMER_MKT_LIST_INFO.MODOPER
Where equivalent:

Qualification: dimension
List of values: 2p1, editable, manual refresh, not exportable
Security access level: 0
Can be used: in result, in condition, in sort

Object status: show

Class:	Prospect Mailing Address
Description:	This class holds the mailing address of the prospect.

Object: **Address 1**
 Type: Character
 Description: This is the address line 1 of the prospects mailing address.
 Select equivalent: MKT_PROSPECT.ADDRESS_1
 Where equivalent:

Qualification: dimension
 List of values: 2gm, editable, manual refresh, not exportable
 Security access level: 0
 Can be used: in result, in condition, in sort
 Object status: show

Object: **Address 2**
 Type: Character
 Description: This is the address line 2 of the prospects mailing address.
 Select equivalent: MKT_PROSPECT.ADDRESS_2
 Where equivalent:

Qualification: dimension
 List of values: 2gn, editable, manual refresh, not exportable
 Security access level: 0
 Can be used: in result, in condition, in sort
 Object status: show

Object: **Address 3**
 Type: Character
 Description: This is the address line 3 of the prospects mailing address.
 Select equivalent: MKT_PROSPECT.ADDRESS_3
 Where equivalent:

Qualification: dimension
 List of values: 2go, editable, manual refresh, not exportable
 Security access level: 0
 Can be used: in result, in condition, in sort
 Object status: show

Object: **Address 4**
 Type: Character

Description: This is the address line 4 of the prospects mailing address.
Select equivalent: MKT_PROSPECT.ADDRESS_4
Where equivalent:

Qualification: dimension
List of values: 2gp, editable, manual refresh, not exportable
Security access level: 0
Can be used: in result, in condition, in sort
Object status: show

Object: **City**
Type: Character
Description: This is the City of the prospects mailing address.
Select equivalent: MKT_PROSPECT.CITY
Where equivalent:

Qualification: dimension
List of values: 2gq, editable, manual refresh, not exportable
Security access level: 0
Can be used: in result, in condition, in sort
Object status: show

Object: **State**
Type: Character
Description: This is the State of the prospects mailing address.
Select equivalent: MKT_PROSPECT.STATE
Where equivalent:

Qualification: dimension
List of values: 2gr, editable, manual refresh, not exportable
Security access level: 0
Can be used: in result, in condition, in sort
Object status: show

Object: **Postal Code**
Type: Character
Description: This is the Postal Code of the prospects mailing address.
Select equivalent: MKT_PROSPECT.POSTAL_CODE
Where equivalent:

Qualification: dimension
List of values: 2gs, editable, manual refresh, not exportable
Security access level: 0

Can be used: in result, in condition, in sort
Object status: show

Object: **Country Code**
Type: Character
Description: This is the Country Code of the prospects mailing address.
Select equivalent: MKT_PROSPECT.COUNTRY_CODE
Where equivalent:

Qualification: dimension
List of values: 2gt, editable, manual refresh, not exportable
Security access level: 0
Can be used: in result, in condition, in sort
Object status: show

Object: **Country Description**
Type: Character
Description: This is the Country description of the prospects mailing address.
Select equivalent: MKT_PROSPECT.COUNTRY_DESCR
Where equivalent:

Qualification: dimension
List of values: 2gu, editable, manual refresh, not exportable
Security access level: 0
Can be used: in result, in condition, in sort
Object status: show

Class:	Prospect Name Components
Description:	This class holds the prospect customers name components.

Object: **Label Name**
Type: Character
Description: This is the prospect customers label name.
Select equivalent: MKT_PROSPECT.LABEL_NAME
Where equivalent:

Qualification: dimension
List of values: 2g5, editable, manual refresh, not exportable
Security access level: 0
Can be used: in result, in condition, in sort
Object status: show

Object: **First Name**

Type: Character
Description: This is the prospect customers First Name.
Select equivalent: MKT_PROSPECT.FIRST_NAME
Where equivalent:

Qualification: dimension
List of values: 2g7, editable, manual refresh, not exportable
Security access level: 0
Can be used: in result, in condition, in sort
Object status: show

Object: **Middle Name**
Type: Character
Description: This is the prospect customers Middle Name.
Select equivalent: MKT_PROSPECT.MIDDLE_NAME
Where equivalent:

Qualification: dimension
List of values: 2g8, editable, manual refresh, not exportable
Security access level: 0
Can be used: in result, in condition, in sort
Object status: show

Object: **Last Name**
Type: Character
Description: This is the prospect customers Last Name.
Select equivalent: MKT_PROSPECT.LAST_NAME
Where equivalent:

Qualification: dimension
List of values: 2g9, editable, manual refresh, not exportable
Security access level: 0
Can be used: in result, in condition, in sort
Object status: show

Object: **Name Prefix**
Type: Character
Description: This is the prospect customers Name Prefix.
Select equivalent: MKT_PROSPECT.NAME_PREFIX
Where equivalent:

Qualification: dimension
List of values: 2g6, editable, manual refresh, not exportable

Security access level: 0
 Can be used: in result, in condition, in sort
 Object status: show

Object: **Name Suffix**
 Type: Character
 Description: This is the prospect customers Name Suffix.
 Select equivalent: MKT_PROSPECT.NAME_SUFFIX
 Where equivalent:

Qualification: dimension
 List of values: 2ga, editable, manual refresh, not exportable
 Security access level: 0
 Can be used: in result, in condition, in sort
 Object status: show

Object: **Name Credentials**
 Type: Character
 Description: This is the prospect customers Name Credentials.
 Select equivalent: MKT_PROSPECT.NAME_CREDENTIALS
 Where equivalent:

Qualification: dimension
 List of values: 2gb, editable, manual refresh, not exportable
 Security access level: 0
 Can be used: in result, in condition, in sort
 Object status: show

Class:	Prospect Communication Info
Description:	This class holds the prospect customers communication info.

Object: **Home Phone**
 Type: Character
 Description: This is the prospect customer home phone.
 Select equivalent: MKT_PROSPECT.HOME_PHONE
 Where equivalent:

Qualification: dimension
 List of values: 2h6, editable, manual refresh, not exportable
 Security access level: 0
 Can be used: in result, in condition, in sort
 Object status: show

Object: **Office Phone**
 Type: Character
 Description: This is the prospect customer Office Phone.
 Select equivalent: MKT_PROSPECT.OFFICE_PHONE
 Where equivalent:

Qualification: dimension
 List of values: 2h7, editable, manual refresh, not exportable
 Security access level: 0
 Can be used: in result, in condition, in sort
 Object status: show

Object: **Fax**
 Type: Character
 Description: This is the prospect customer Fax.
 Select equivalent: MKT_PROSPECT.FAX
 Where equivalent:

Qualification: dimension
 List of values: 2h8, editable, manual refresh, not exportable
 Security access level: 0
 Can be used: in result, in condition, in sort
 Object status: show

Object: **Email**
 Type: Character
 Description: This is the prospect customer Email.
 Select equivalent: MKT_PROSPECT.EMAIL
 Where equivalent:

Qualification: dimension
 List of values: 2h9, editable, manual refresh, not exportable
 Security access level: 0
 Can be used: in result, in condition, in sort
 Object status: show

Class: Prospect Demographics Info
Description: This class holds the prospects customers demogrphatics info.

Object: **Customer Class Code**
 Type: Character
 Description: This is the customer class code of the prospect customer.
 Select equivalent: MKT_PROSPECT.CUSTOMER_CLASS_CODE
 Where equivalent:

Qualification: dimension
List of values: 2gc, editable, manual refresh, not exportable
Security access level: 0
Can be used: in result, in condition, in sort
Object status: show

Object: **Customer Status Code**
Type: Character
Description: This is the Customer Status Code of the prospect customer.
Select equivalent: MKT_PROSPECT.CUSTOMER_STATUS_CODE
Where equivalent:

Qualification: dimension
List of values: 2gd, editable, manual refresh, not exportable
Security access level: 0
Can be used: in result, in condition, in sort
Object status: show

Object: **Job Title**
Type: Character
Description: This is the Job Title of the prospect customer.
Select equivalent: MKT_PROSPECT.JOB_TITLE
Where equivalent:

Qualification: dimension
List of values: 2gj, editable, manual refresh, not exportable
Security access level: 0
Can be used: in result, in condition, in sort
Object status: show

Object: **Job Function Code**
Type: Character
Description: This is the Job Function Code of the prospect customer.
Select equivalent: MKT_PROSPECT.JOB_FUNCTION_CODE
Where equivalent:

Qualification: dimension
List of values: 2ha, editable, manual refresh, not exportable
Security access level: 0
Can be used: in result, in condition, in sort
Object status: show

Class: **Prospect Company Info**
 Description: This class holds the prospects company info.

Object: **Company Mast Cust**
 Type: Character
 Description: This is the prospect customers company master customer id.
 Select equivalent: MKT_PROSPECT.COMPANY_MAST_CUST
 Where equivalent:

Qualification: dimension
 List of values: 2ge, editable, manual refresh, not exportable
 Security access level: 0
 Can be used: in result, in condition, in sort
 Object status: show

Object: **Company Sub Cust**
 Type: Number
 Description: This is the prospect customers company Sub customer id.
 Select equivalent: MKT_PROSPECT.COMPANY_SUB_CUST
 Where equivalent:

Qualification: dimension
 List of values: 2gf, editable, manual refresh, not exportable
 Security access level: 0
 Can be used: in result, in condition, in sort
 Object status: show

Object: **Company Name**
 Type: Character
 Description: This is the prospect customers company Name.
 Select equivalent: MKT_PROSPECT.COMPANY_NAME
 Where equivalent:

Qualification: dimension
 List of values: 2gg, editable, manual refresh, not exportable
 Security access level: 0
 Can be used: in result, in condition, in sort
 Object status: show

Object: **Attention Line**
 Type: Character
 Description: This is the Attention line for the prospect customers company.
 Select equivalent: MKT_PROSPECT.ATTENTION_LINE

Where equivalent:

Qualification: dimension
 List of values: 2gh, editable, manual refresh, not exportable
 Security access level: 0
 Can be used: in result, in condition, in sort
 Object status: show

Object: **Personal Line**
 Type: Character
 Description: This is the Personal line for the prospect customers company
 Select equivalent: MKT_PROSPECT.PERSONAL_LINE
 Where equivalent:

Qualification: dimension
 List of values: 2gi, editable, manual refresh, not exportable
 Security access level: 0
 Can be used: in result, in condition, in sort
 Object status: show

Object: **Revenue Range Code**
 Type: Character
 Description: This isthe revenue range code of the prospects customer company.Personal
 Select equivalent: MKT_PROSPECT.REVENUE_RANGE_CODE
 Where equivalent:

Qualification: dimension
 List of values: 2hb, editable, manual refresh, not exportable
 Security access level: 0
 Can be used: in result, in condition, in sort
 Object status: show

Object: **Revenue**
 Type: Number
 Description: This isthe revenue of the prospects customer company.Personal
 Select equivalent: MKT_PROSPECT.REVENUE
 Where equivalent:

Qualification: dimension
 List of values: 2hc, editable, manual refresh, not exportable
 Security access level: 0
 Can be used: in result, in condition, in sort
 Object status: show

Class:	Agency Info
Description:	This class houses the marketing agency info related to a particulare market code

No objects

Class:	Agency Customer Info
Description:	This class houses the marketing agency customer info.

Object: **Agency Customer ID**

Type: Character

Description: This is the concatenation of the master customer id and the sub customer id of the agency customer if the sub customer id is not 0 , else it is the master customer id.

Select equivalent:

```
CASE WHEN CUSTOMER_MARKET_CODE.SUB_CUSTOMER_ID = 0 THEN CUSTOMER_MARKET_CODE.MASTER_CUSTOMER_ID ELSE CUSTOMER_MARKET_CODE.MASTER_CUSTOMER_ID + '-' + CONVERT(CHAR, CUSTOMER_MARKET_CODE.SUB_CUSTOMER_ID) END
```

Where equivalent:

Qualification: dimension

List of values: 0n6, editable, manual refresh, not exportable

Security access level: 0

Can be used: in result, in condition, in sort

Object status: show

Object: **Agency Master Customer ID**

Type: Character

Description: This is the master customer id of the registrant.

Select equivalent: CUSTOMER_MARKET_CODE.MASTER_CUSTOMER_ID

Where equivalent:

Qualification: dimension

List of values: 0n7, editable, manual refresh, not exportable

Security access level: 0

Can be used: in result, in condition, in sort

Object status: show

Object: **Agency Sub Customer ID**
Type: Number
Description: This is the sub customer id of the registrant.
Select equivalent: CUSTOMER_MARKET_CODE.SUB_CUSTOMER_ID
Where equivalent:

Qualification: dimension
List of values: 0n8, editable, manual refresh, not exportable
Security access level: 0
Can be used: in result, in condition, in sort
Object status: show

Object: **Name**
Type: Character
Description: This is the search name
Select equivalent: CUSTOMER_MARKET_CODE.LABEL_NAME
Where equivalent:

Qualification: dimension
List of values: 0nb, editable, manual refresh, not exportable
Security access level: 0
Can be used: in result, in condition, in sort
Object status: show

Object: **Customer Class**
Type: Character
Description: This is the customer class for the agency customer
Select equivalent: CUSTOMER_MARKET_CODE.CUSTOMER_CLASS_CODE
Where equivalent:

Qualification: dimension
List of values: 0n9, editable, manual refresh, not exportable
Security access level: 0
Can be used: in result, in condition, in sort
Object status: show

Object: **Primary Phone**
Type: Character
Description: This is the primary phone
Select equivalent: CUSTOMER_MARKET_CODE.PRIMARY_PHONE

Where equivalent:

Qualification: dimension
 List of values: 0nc, editable, manual refresh, not exportable
 Security access level: 0
 Can be used: in result, in condition, in sort
 Object status: show

Class: Product Linked to Market Code

Description: This class holds the information regarding the market codes associated subsystem and products.

Object: Subsystem
Type: Character
Description: This is the subsystem.
Select equivalent: MKT_MARKET_DETAIL.SUBSYSTEM
Where equivalent:

Qualification: dimension
 List of values: 0mm, editable, manual refresh, not exportable
 Security access level: 0
 Can be used: in result, in condition, in sort
 Object status: show

Object: Product Code
Type: Character
Description: This is the product code for the select subsystem and the added product under the subsystem
Select equivalent: MKT_MARKET_DETAIL.PRODUCT_CODE
Where equivalent:

Qualification: dimension
 List of values: 0mo, editable, manual refresh, not exportable
 Security access level: 0
 Can be used: in result, in condition, in sort
 Object status: show

Object: Product Code Description
Type: Character
Description: This is the product code description

Select equivalent: APP_CODE.DESCR
 Where equivalent:

Qualification: dimension
 List of values: 0mq, editable, manual refresh, not exportable
 Security access level: 0
 Can be used: in result, in condition, in sort
 Object status: show

Object: **Parent Product**
 Type: Character
 Description: This is the parent product
 Select equivalent: MKT_MARKET_DETAIL.PARENT_PRODUCT
 Where equivalent:

Qualification: dimension
 List of values: 0mn, editable, manual refresh, not exportable
 Security access level: 0
 Can be used: in result, in condition, in sort
 Object status: show

Class:	Market Code Creation & Modification Info
Description:	

Object: **Market Code Creation Date**
 Type: Date
 Description: This is the market code creation date.
 Select equivalent: MKT_MARKET_DETAIL.ADDDATE
 Where equivalent:

Qualification: dimension
 List of values: 2fr, editable, manual refresh, not exportable
 Security access level: 0
 Can be used: in result, in condition, in sort
 Object status: show

Object: **Market Code Created Operator**
 Type: Character
 Description: This is the operator who created the market code.
 Select equivalent: MKT_MARKET_DETAIL.ADDOPER
 Where equivalent:

Qualification: dimension

List of values: 2ox, editable, manual refresh, not exportable
 Security access level: 0
 Can be used: in result, in condition, in sort
 Object status: show

Object: **Market Code Modification Date**
 Type: Date
 Description: This is the market code modification date.
 Select equivalent: MKT_MARKET_DETAIL.MODDATE
 Where equivalent:

Qualification: dimension
 List of values: 2fs, editable, manual refresh, not exportable
 Security access level: 0
 Can be used: in result, in condition, in sort
 Object status: show

Object: **Market Code Modified Operator**
 Type: Character
 Description: This is the operator who modified the market code.
 Select equivalent: MKT_MARKET_DETAIL.MODOPER
 Where equivalent:

Qualification: dimension
 List of values: 2oy, editable, manual refresh, not exportable
 Security access level: 0
 Can be used: in result, in condition, in sort
 Object status: show

Class:	Marketing List Usage Info
Description:	This class has the objects related to the usage of the generated marketing list

Object: **Usage Limit**
 Type: Character
 Description: This the usage limit of the marketing list.
 Select equivalent: MKT_LIST_MASTER.USAGE_LIMIT_CODE
 Where equivalent:

Qualification: dimension
 List of values: 0m4, editable, manual refresh, not exportable
 Security access level: 0
 Can be used: in result, in condition, in sort
 Object status: show

Object: **Mail Usage?**
Type: Character
Description: Flag to identify the mail usage for the marketing list
Select equivalent: MKT_LIST_MASTER.MAIL_USE_FLAG
Where equivalent:

Qualification: dimension
List of values: 0m5, editable, manual refresh, not exportable
Security access level: 0
Can be used: in result, in condition, in sort
Object status: show

Object: **Mail Number**
Type: Number
Description: This is the mail number for the marketing list
Select equivalent: MKT_LIST_MASTER.MAIL_USE_NUMBER
Where equivalent:

Qualification: dimension
List of values: 0m6, editable, manual refresh, not exportable
Security access level: 0
Can be used: in result, in condition, in sort
Object status: show

Object: **Phone Usage?**
Type: Character
Description: Flag to identify the Phone Usage for the marketing list
Select equivalent: MKT_LIST_MASTER.PHONE_USE_FLAG
Where equivalent:

Qualification: dimension
List of values: 0m7, editable, manual refresh, not exportable
Security access level: 0
Can be used: in result, in condition, in sort
Object status: show

Object: **Phone Number**
Type: Number
Description: This is the number of time the phone number can be used for the marketing list
Select equivalent: MKT_LIST_MASTER.PHONE_USE_NUMBER
Where equivalent:

Qualification: dimension
 List of values: 0m8, editable, manual refresh, not exportable
 Security access level: 0
 Can be used: in result, in condition, in sort
 Object status: show

Object: **Email Usage?**
 Type: Character
 Description:

Select equivalent: MKT_LIST_MASTER.EMAIL_USE_FLAG
 Where equivalent:

Qualification: dimension
 List of values: 2kq, editable, manual refresh, not exportable
 Security access level: 0
 Can be used: in result, in condition, in sort
 Object status: show

Object: **Email Number**
 Type: Number
 Description: This is the number of time that the email can be used for the marketing list
 Select equivalent: MKT_LIST_MASTER.EMAIL_USE_NUMBER
 Where equivalent:

Qualification: dimension
 List of values: 2kr, editable, manual refresh, not exportable
 Security access level: 0
 Can be used: in result, in condition, in sort
 Object status: show

Object: **Fax Usage?**
 Type: Character
 Description: Flag to identify the fax usage for the marketing list
 Select equivalent: MKT_LIST_MASTER.FAX_USE_FLAG
 Where equivalent:

Qualification: dimension
 List of values: 0m9, editable, manual refresh, not exportable
 Security access level: 0
 Can be used: in result, in condition, in sort
 Object status: show

Object: **Fax Number**
Type: Number
Description: This is the number of time that the fax can be used for the marketing list
Select equivalent: MKT_LIST_MASTER.FAX_USE_NUMBER
Where equivalent:

Qualification: dimension
List of values: 0ma, editable, manual refresh, not exportable
Security access level: 0
Can be used: in result, in condition, in sort
Object status: show

Object: **Combined?**
Type: Character
Description: Flag to identify the combined usage for the marketing list
Select equivalent: MKT_LIST_MASTER.COMBINED_USE_FLAG
Where equivalent:

Qualification: dimension
List of values: 0mb, editable, manual refresh, not exportable
Security access level: 0
Can be used: in result, in condition, in sort
Object status: show

Object: **Combined Number**
Type: Number
Description: This is the combined number for the marketing list
Select equivalent: MKT_LIST_MASTER.COMBINED_USE_NUMBER
Where equivalent:

Qualification: dimension
List of values: 0mc, editable, manual refresh, not exportable
Security access level: 0
Can be used: in result, in condition, in sort
Object status: show

Object: **Usage Exhaust Flag**
Type: Character
Description: This is the flag to indicate if the usage criteria has been exhausted or not.
Select equivalent: MKT_LIST_MASTER.USAGE_EXHAUSTED_FLAG
Where equivalent:

Qualification: dimension
List of values: 2kt, editable, manual refresh, not exportable
Security access level: 0
Can be used: in result, in condition, in sort
Object status: show

Object: **Member Only Flag**
Type: Character
Description:

Select equivalent: MKT_LIST_MASTER.MEMBER_ONLY_FLAG
Where equivalent:

Qualification: dimension
List of values: 2pn, editable, manual refresh, not exportable
Security access level: 0
Can be used: in result, in condition, in sort
Object status: show

Object: **Promotional Communication List Flag**
Type: Character
Description:

Select equivalent: MKT_LIST_MASTER.PROMOTIONAL_COMMUNICATION_LIST_FLAG
Where equivalent:

Qualification: dimension
List of values: 2po, editable, manual refresh, not exportable
Security access level: 0
Can be used: in result, in condition, in sort
Object status: show

Object: **Communication Purpose Code**
Type: Character
Description:

Select equivalent: MKT_LIST_MASTER.COMMUNICATION_PURPOSE_CODE
Where equivalent:

Qualification: dimension
List of values: 2pp, editable, manual refresh, not exportable
Security access level: 0
Can be used: in result, in condition, in sort

Object status: show

Object: **List Subject Code**

Type: Character

Description:

Select equivalent: MKT_LIST_MASTER.LIST_SUBJECT_CODE

Where equivalent:

Qualification: dimension

List of values: 2pq, editable, manual refresh, not exportable

Security access level: 0

Can be used: in result, in condition, in sort

Object status: show

Object: **Opt In Interest Area Code**

Type: Character

Description:

Select equivalent: MKT_LIST_MASTER.OPT_IN_INTEREST_AREA_CODE

Where equivalent:

Qualification: dimension

List of values: 2pr, editable, manual refresh, not exportable

Security access level: 0

Can be used: in result, in condition, in sort

Object status: show

Object: **Opt In Processing Type Code**

Type: Character

Description:

Select equivalent: MKT_LIST_MASTER.OPT_IN_PROCESSING_TYPE_CODE

Where equivalent:

Qualification: dimension

List of values: 2ps, editable, manual refresh, not exportable

Security access level: 0

Can be used: in result, in condition, in sort

Object status: show

Class:

List Code Usage Statistics

Description:

This class holds the info for the list code usage statistics.

Object: **Original Source Code**
Type: Character
Description:

Select equivalent: MKT_LIST_DETAIL.ORIGINAL_SOURCE_CODE
Where equivalent:

Qualification: dimension
List of values: 2pk, editable, manual refresh, not exportable
Security access level: 0
Can be used: in result, in condition, in sort
Object status: show

Object: **Original List Code**
Type: Character
Description:

Select equivalent: MKT_LIST_DETAIL.ORIGINAL_LIST_CODE
Where equivalent:

Qualification: dimension
List of values: 2pl, editable, manual refresh, not exportable
Security access level: 0
Can be used: in result, in condition, in sort
Object status: show

Object: **Mail Use Number**
Type: Number
Description:

Select equivalent: MKT_LIST_DETAIL.MAIL_USE_NUMBER
Where equivalent:

Qualification: dimension
List of values: 217, editable, manual refresh, not exportable
Security access level: 0
Can be used: in result, in condition, in sort
Object status: show

Object: **Fax Use Number**
Type: Number
Description:

Select equivalent: MKT_LIST_DETAIL.FAX_USE_NUMBER
Where equivalent:

Qualification: dimension
List of values: 218, editable, manual refresh, not exportable
Security access level: 0
Can be used: in result, in condition, in sort
Object status: show

Object: **Phone Use Number**
Type: Number
Description:

Select equivalent: MKT_LIST_DETAIL.PHONE_USE_NUMBER
Where equivalent:

Qualification: dimension
List of values: 219, editable, manual refresh, not exportable
Security access level: 0
Can be used: in result, in condition, in sort
Object status: show

Object: **Email Use Number**
Type: Number
Description:

Select equivalent: MKT_LIST_DETAIL.EMAIL_USE_NUMBER
Where equivalent:

Qualification: dimension
List of values: 21a, editable, manual refresh, not exportable
Security access level: 0
Can be used: in result, in condition, in sort
Object status: show

Object: **Combined Use Number**
Type: Number
Description:

Select equivalent: MKT_LIST_DETAIL.COMBINED_USE_NUMBER
Where equivalent:

Qualification: dimension
 List of values: 2lb, editable, manual refresh, not exportable
 Security access level: 0
 Can be used: in result, in condition, in sort
 Object status: show

Class:	List Code Creation & Modification Info
Description:	

Object: **List Code Creation Date**
 Type: Date
 Description: This is the list code creation date.
 Select equivalent: MKT_LIST_MASTER.ADDDATE
 Where equivalent:

Qualification: dimension
 List of values: 2fp, editable, manual refresh, not exportable
 Security access level: 0
 Can be used: in result, in condition, in sort
 Object status: show

Object: **List Code Created Operator**
 Type: Character
 Description: This is the operator who added the list code.
 Select equivalent: MKT_LIST_MASTER.ADDOPER
 Where equivalent:

Qualification: dimension
 List of values: 2ov, editable, manual refresh, not exportable
 Security access level: 0
 Can be used: in result, in condition, in sort
 Object status: show

Object: **List Code Modification Date**
 Type: Date
 Description: This is the list code modified date.
 Select equivalent: MKT_LIST_MASTER.MODDATE
 Where equivalent:

Qualification: dimension
 List of values: 2fq, editable, manual refresh, not exportable
 Security access level: 0
 Can be used: in result, in condition, in sort

Object status: show

Object: **List Code Modified Operator**
 Type: Character
 Description: This is the operator who modified the list code.
 Select equivalent: MKT_LIST_MASTER.MODOPER
 Where equivalent:

Qualification: dimension
 List of values: 2ow, editable, manual refresh, not exportable
 Security access level: 0
 Can be used: in result, in condition, in sort
 Object status: show

Class:	Orders
Description:	

No objects

Class:	Order Date
Description:	

No objects

Class:	Activities
Description:	

No objects

Condition List

No Conditions

Conditions

Class:	Conditions
Description:	This class holds all the predefined conditions

Active Market Codes only

Description:

Where Equivalent:MKT_MARKET_MASTER.ACTIVE_FLAG='Y'

Unlimited Usage

Description:

Where Equivalent:MKT_LIST_MASTER.USAGE_LIMIT_CODE='UNLIMITED'

Limited Usage

Description:

Where Equivalent:MKT_LIST_MASTER.USAGE_LIMIT_CODE='LIMITED'

Exhausted Usage

Description:

Where Equivalent:MKT_LIST_MASTER.USAGE_EXHAUSTED_FLAG='Y'

Class:

Orders

Description:

Active Orders

Description:

Where Equivalent:Order_Detail_Ship_Customer_And_Donor_VW.LINE_STATUS_CODE = 'A' AND Order_Detail_Ship_Customer_And_Donor_VW.FULFILL_STATUS_CODE = 'A'

Proforma Orders

Description:

Where Equivalent:Order_Detail_Ship_Customer_And_Donor_VW.LINE_STATUS_CODE='P'

Canceled Orders

Description:

Where Equivalent:Order_Detail_Ship_Customer_And_Donor_VW.LINE_STATUS_CODE = 'C'

Order Line Subsystem

Description:

Where Equivalent:Order_Detail_Ship_Customer_And_Donor_VW.SUBSYSTEM in @Prompt('Enter the Subsystem','A','Order Info \Subsystem',multi,free)

Orders with List Code

Description:

Where Equivalent:Order_Detail_Ship_Customer_And_Donor_VW.LIST_CODE is not null

Order with Market Code

Description:

Where Equivalent:Order_Detail_Ship_Customer_And_Donor_VW.MARKET_CODE is not null

Orders with Key Code

Description:

Where Equivalent:Order_Detail_Ship_Customer_And_Donor_VW.KEY_CODE is not null

Discounted Orders

Description:

Where Equivalent:Order_Detail_Ship_Customer_And_Donor_VW.BASE_UNIT_DISCOUNT <> 0

Class:	Order Date
Description:	

Today's Orders

Description:

Where Equivalent:Order_Detail_Ship_Customer_And_Donor_VW.ORDER_DATE = convert (SMALLDATETIME, {fn C

This Month's Orders

Description:

Where Equivalent:Month(Order_Detail_Ship_Customer_And_Donor_VW.ORDER_DATE) = Month(getdate()) AND Year(Order_Detail_Ship_Customer_And_Donor_VW.ORDER_DATE) = Year(getdate())

Orders in Date Range

Description:

Where Equivalent:Order_Detail_Ship_Customer_And_Donor_VW.ORDER_DATE between @Prompt('Enter Begin Date','D',,mono,free) and @Prompt('Enter End Date','D',,mono,free)

Class:	Activities
Description:	

Activity Date Range

Description:

Where Equivalent:CUS_ACTIVITY.ACTIVITY_DATE between @Prompt('Enter Begin Date','D',,mono,free) and @Prompt('Enter Last Date','D',,mono,free)

Telemarketing Activities Only

Description:

Where Equivalent:CUS_ACTIVITY.ACTIVITY_CODE = 'TELEMARKET'

Lyris Activities Only

Description:

Where Equivalent:CUS_ACTIVITY.ACTIVITY_CODE = 'LYRIS'

Communication Activities Only

Description:

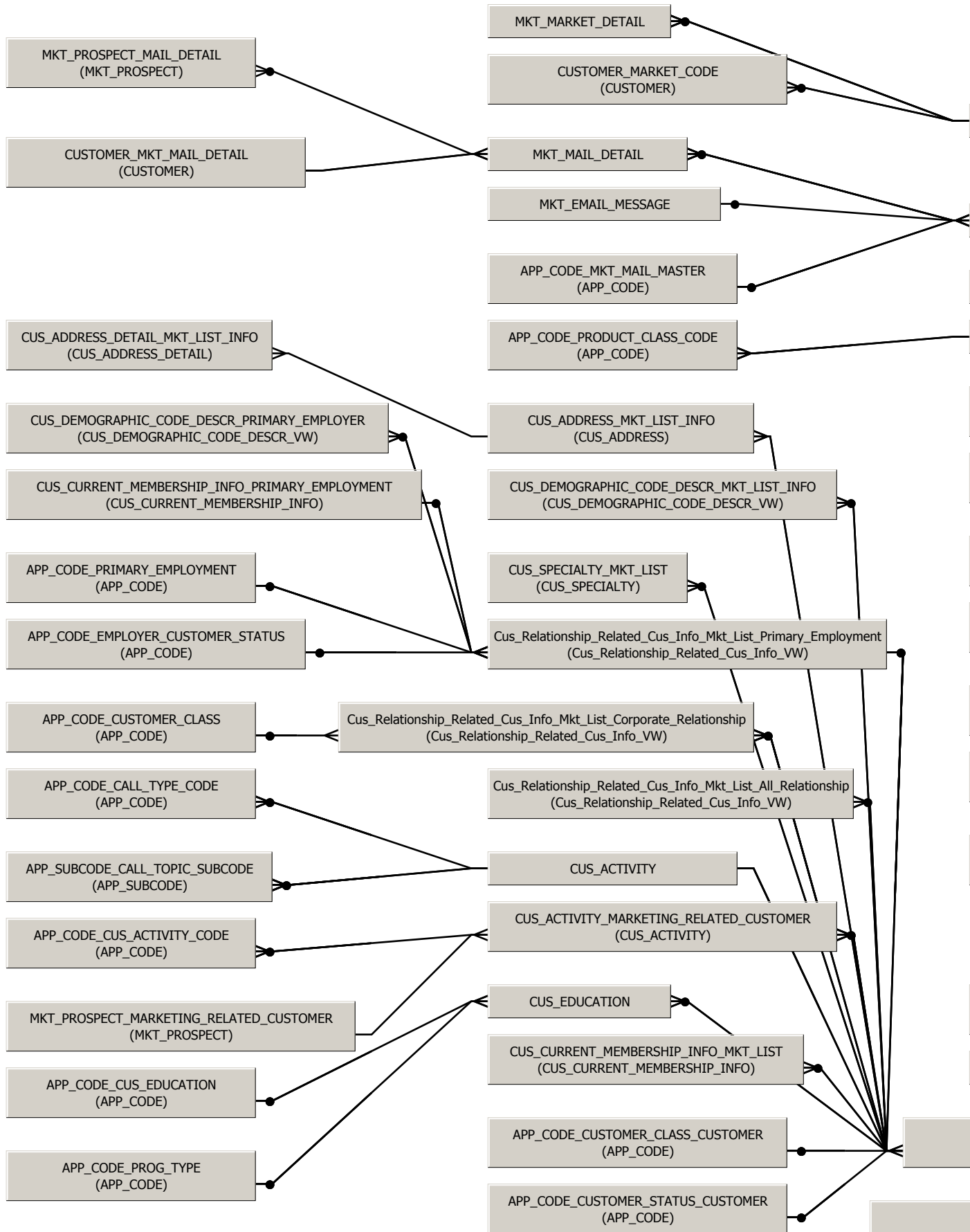
Where Equivalent:CUS_ACTIVITY.ACTIVITY_CODE = 'COMMUNICATION'

Hierarchies List

No Hierarchies

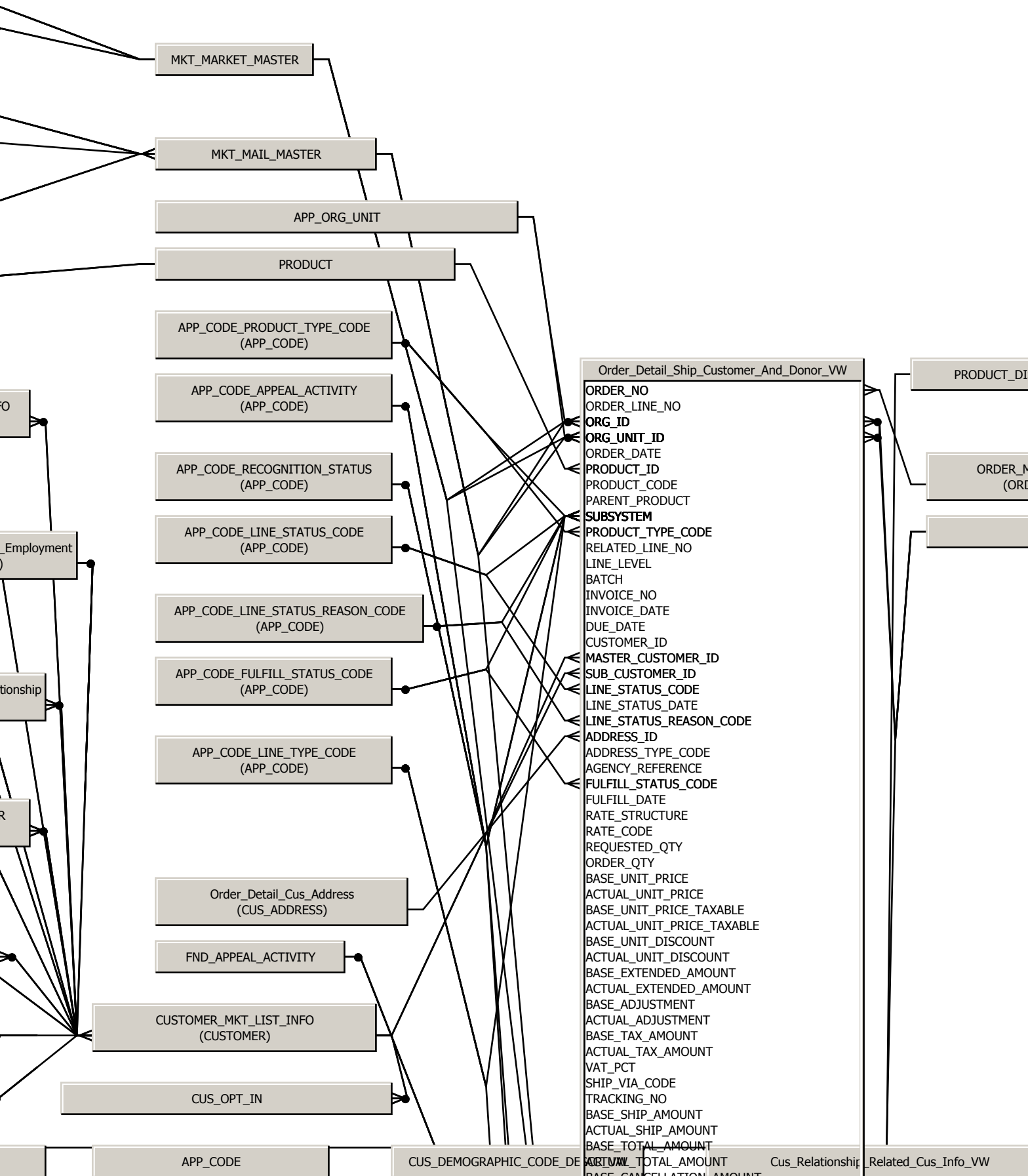
Hierarchies

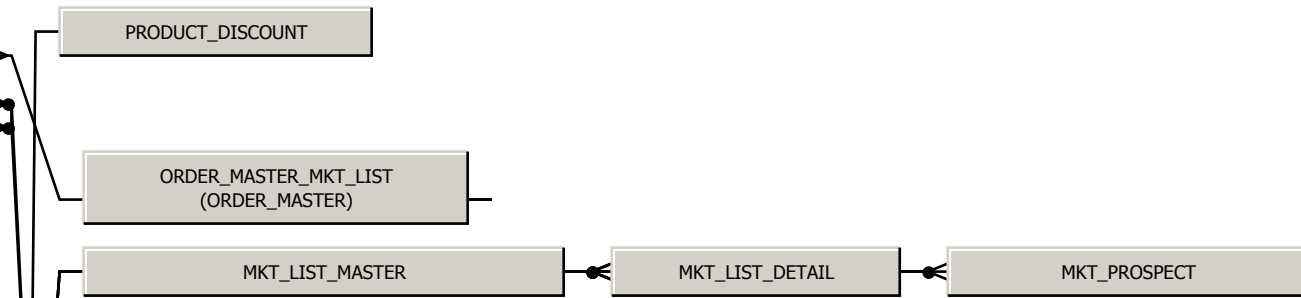
No Hierarchies



ALIAS TABLES DONOT REMOVE !!!!!!!

CUS_ADDRESS_DETAIL		CUSTOMER		APP_SUBCODE	
--------------------	--	----------	--	-------------	--





Universe:M

APP_CODE_PROG_TYPE
(APP_CODE)

APP_CODE_CUSTOMER_CLASS_CUSTOMER
(APP_CODE)

11/12/2008

APP_CODE_CUSTOMER_STATUS_CUSTOMER
(APP_CODE)

ALIAS TABLES DONOT REMOVE !!!!!!!

CUS_ADDRESS_DETAIL

CUSTOMER

APP_SUBCODE

ORDER_MASTER

CUS_SPECIALTY

CUSTOMER_MKT_LIST_INFO
(CUSTOMER)

Universe:Marketing

CUS_OPT_IN

APP_CODE

CUS_DEMOGRAPHIC_CODE_DE

ACTUAL_ADJUSTMENT
 BASE_TAX_AMOUNT
 ACTUAL_TAX_AMOUNT
 VAT_PCT
 SHIP_VIA_CODE
 TRACKING_NO
 BASE_SHIP_AMOUNT
 ACTUAL_SHIP_AMOUNT
 BASE_TOTAL_AMOUNT
 ACTUAL_TOTAL_AMOUNT
 BASE_CANCELLATION_AMOUNT
 ACTUAL_CANCELLATION_AMOUNT
 CURRENCY_CODE
 XRATE
 XRATE_DATE
 COMMENTS
 DESCRIPTION
 INITIAL_BEGIN_DATE
 CYCLE_BEGIN_DATE
 CYCLE_END_DATE
 WAREHOUSE_ID
 BIN_LOCATION
 CAMPAIGN
 FUND
 APPEAL
 SOLICITOR_TEAM
 SOLICITOR_MAST_CUST
 SOLICITOR_SUB_CUST
 MARKET_CODE
 LIST_CODE
 KEY_CODE
 START_ISSUE
 END_ISSUE
 START_SUPPLEMENT
 END_SUPPLEMENT
 SHIP_DATE
 RMA_NUMBER
 ORIGINAL_ORDER_LINE_NO
 ORDER_ADDDATE
 RECURRING_CODE
 RENEWAL_CREATED_FLAG
 AUTO_PAY_METHOD_CODE
 PACKAGE_FLAG
 PACKAGE_PRODUCT_ID
 PRICING_CURRENCY_CODE
 PRICE_BEGIN_DATE
 PAY_PRIORITY
 TAXABLE_FLAG
 TAX_CATEGORY_CODE
 VAT_CATEGORY_CODE
 PRODUCT_DISCOUNT_ID
 COMMENTS_ON_INVOICE_FLAG
 RENEWAL_NOTICE_COUNT
 AR_ACCOUNT
 PPL_ACCOUNT
 BACK_ISSUES_FLAG
 RECOGNITION_STATUS_CODE
 GRACE_DATE
 INVOICE_METHOD_CODE
 INVOICE_PRINT_DATE
 INVOICE_POSTED_FLAG
 MANUAL_DISCOUNT_FLAG
 SHIPPING_PROCESS_ID
 ALWAYS_RENEW_FLAG
 PRORATE_FLAG
 DUES_SCHEDULE_ID
 APPEAL_ACTIVITY_CODE
 ORIG_SHIP_ADDRESS_ID
 ORIG_SHIP_ADDRESS_TYPE_CODE
 ALLOW_PAYMENT_FLAG
 RETURNED_QTY
 RENEW_TO_CC_FLAG
 MANUAL_SHIP_FLAG
 PAY_FREQUENCY_CODE
 ADDOPER
 ADDDATE
 MODOPER
 MODDATE
 CONCURRENCY_ID
 RENEWAL_DATE_NEXT_ORDER
 RENEWAL_DATE_THIS_ORDER
 LINE_TYPE_CODE
 ORIGINAL_ORDER_NO
 DEFERRED_RECEIPT_NO
 DEFERRED_CC_AUTHORIZATION
 DEFERRED_CC_AUTH_EXP

11/12/2008

Cus_Relationship

Related_Cus_Info_VW

Related_Cus_Info_VW

MKT_PROSPECT_ACTIVITY

CUS_CURRENT_MEMBERSHIP_INFO

ORDER_DETAIL

ORDER_DETAIL

CUS_ADDRESS

MODOPER	
MODDATE	
CONCURRENCY_ID	11/12/2008
RENEWAL_DATE_NEXT_ORDER	
RENEWAL_DATE_THIS_ORDER	
LINE_TYPE_CODE	
ORIGINAL_ORDER_NO	
DEFERRED_RECEIPT_NO	
DEFERRED_CC_AUTHORIZATION	
DEFERRED_CC_AUTH_EXP_DATE	
CONFIRMATION_DATE	
ATTENDANCE_FLAG	
GRADE_CODE	
COURSE_CODE	
EXAM_CODE	
EXAM_ID	
PASSWORD	
REVENUE_DIST_BEGIN_DATE	
AGENCY_UNIT_DISCOUNT	
BLOCK_SALES_TAX_FLAG	
LINE_COMPLETE_FLAG	
ADV_MEDIA_CODE	
ADV_SCHEDULE_ID	
SALES_COMMISSION_PCT	
AGENCY_DISCOUNT_PCT	
BASE_SHIP_TAX_AMOUNT	
ACTUAL_SHIP_TAX_AMOUNT	
MANUAL_RATE_OVERRIDE_FLAG	
COUPON_CODE	
BASE_COUPON_AMOUNT	
ACTUAL_COUPON_AMOUNT	
BASE_SPACE_CREDIT_AMOUNT	
ACTUAL_SPACE_CREDIT_AMOUNT	
BASE_TRADE_FOR_SERVICE_AMOUNT	
ACTUAL_TRADE_FOR_SERVICE_AMOUNT	
BASE_SALES_TAX_AMOUNT	
ACTUAL_SALES_TAX_AMOUNT	
BASE_VAT_TAX_AMOUNT	
ACTUAL_VAT_TAX_AMOUNT	
TRANSFER_FROM_ORDER_NO	
TRANSFER_FROM_ORDER_LINE_NO	
TRANSFER_TO_ORDER_NO	
TRANSFER_TO_ORDER_LINE_NO	
SHIPPING_VAT_CATEGORY_CODE	
SHIPPING_VAT_PCT	
ACTUAL_AGENCY_UNIT_DISCOUNT	
MANUAL_AGENCY_DISCOUNT_FLAG	
Account_Begin_Date	
TRANSFER_DATE	
TRANSCRIPT_CREATED_FLAG	
ORDER_STATUS_CODE	
ORDER_METHOD_CODE	

