

Universe Parameters

Definition

Name: *Generic Product Setup*

Description:

Connection: *Personify707*

General information

Created: *11/12/2007 by Administrator*

Modified: *1/25/2008 by Administrator*

Comments:

Statistics: *20 Classes*
191 Objects
19 Tables
34 Aliases
46 Joins
0 Contexts
0 Hierarchies
12 Conditions

Strategies

Join strategy: *Edit Manually (none)*

Table strategy: *(Built-in) Standard*

Object strategy: *(Built-in) Standard Renaming*

Controls

Limit size of result set to: *5000 rows*

Limit size of long text objects to: *1000 characters*

Limit execution time to: *10 minutes*

Warn if cost estimate exceeds: *unchecked*

SQL parameters

Query

Allow use of subqueries: *yes*

Allow use of union, intersect and minus operators: *yes*

Allow complex conditions in Query Panel: *yes*

Cartesian products: *warn*

Multiple paths

Generate several SQL statements for each context: *yes*

Generate several SQL statements for each measure: *yes*

Allow selection of multiple contexts: *no*

Links

No links for this universe

Object List

No classes

Object Properties

Class:

General Product Setup Info

Description:

This class includes information about product setup.

Object:

Subsystem

Type:

Character

Description:

This is the subsystem to which the product belongs to i.e. a membership product belongs to subsystem 'MBR', a Donation product belongs to subsystem 'FND' etc.

Select equivalent:

PRODUCT.SUBSYSTEM

Where equivalent:

Qualification:

dimension

List of values:

no

Security access level:

0

Can be used:

in result, in condition, in sort

Object status:

show

Object:

Product Short Name

Type:

Character

Description:

This is the short name of the product.

Select equivalent:

PRODUCT.SHORT_NAME

Where equivalent:

Qualification:

dimension

List of values:

no

Security access level:

0

Can be used:

in result, in condition, in sort

Object status:

show

Object:

Parent Product Code

Type:

Character

Description: This is the parent product code. For a membership product the parent product code is always the member group. In case of meetings the parent product code will be the meeting product code and all the sessions will have the meeting product code as their parent product code.

Select equivalent: PRODUCT.PARENT_PRODUCT

Where equivalent:

Qualification: dimension
 List of values: 00a, editable, manual refresh, not exportable
 Security access level: 0
 Can be used: in result, in condition, in sort
 Object status: show

Object: **Product Code**
 Type: Character
 Description: This is the product code. For membership product this will be the National/Chapter membership product code. For a session this will be the product code of the session.

Select equivalent: PRODUCT.PRODUCT_CODE

Where equivalent:

Qualification: dimension
 List of values: 00b, editable, manual refresh, not exportable
 Security access level: 0
 Can be used: in result, in condition, in sort
 Object status: show

Object: **Product Long Name**
 Type: Character
 Description: This is the long name of the product.
 Select equivalent: PRODUCT.LONG_NAME

Where equivalent:

Qualification: dimension
 List of values: no
 Security access level: 0
 Can be used: in result, in condition, in sort
 Object status: show

Object: **Product Type Code**
 Type: Character
 Description: This is the type of product. This is defined in the system types and codes and is a fixed type. For the meeting subsystem the possible values of product type are 'M' - Meeting, 'S' - Breakout Session, 'F' - Sponsorship/Other, 'EXAMPROCT' - Exam Proctored, 'EXAMPROD' - Exam Product, 'BADGE' - Badges, 'COURSE' - Course.
 Select equivalent: PRODUCT.PRODUCT_TYPE_CODE

Where equivalent:

Qualification: dimension
 List of values: 00d, editable, manual refresh, not exportable
 Security access level: 0
 Can be used: in result, in condition, in sort
 Object status: show

Object: **Product Type Description**
 Type: Character
 Description: This is the description of the product type.
 Select equivalent: APP_CODE_PRODUCT_TYPE_CODE.DESCR

Where equivalent:

Qualification: dimension
 List of values: no
 Security access level: 0

Can be used: in result, in condition, in sort
 Object status: show

Object: **Product Class Code**
 Type: Character
 Description: This is used to identify the class the product. This comes from system types and codes but the values are not fixed. For the meeting subsystem the possible values could be 'ANNUAL', 'COURSE', 'RECEPTION'. For inventoried products it could be a book, manual or a shirt.
 Select equivalent: PRODUCT.PRODUCT_CLASS_CODE

Where equivalent:

Qualification: dimension
 List of values: 00f, editable, manual refresh, not exportable
 Security access level: 0
 Can be used: in result, in condition, in sort
 Object status: show

Object: **Product Class Description**
 Type: Character
 Description: This is the description of the product class.
 Select equivalent: APP_CODE_PRODUCT_CLASS_CODE.DESCR

Where equivalent:

Qualification: dimension
 List of values: no
 Security access level: 0
 Can be used: in result, in condition, in sort
 Object status: show

Object: **Pricing Method Code**
 Type: Character
 Description: This identifies the pricing method of a product. Thi

s comes from the system types and codes and is a fixed type. The possible values are 'COMP' - Component Only and 'PROD' - Product Only.

Select equivalent: PRODUCT.PRICING_METHOD_CODE

Where equivalent:

Qualification: dimension
 List of values: 00h, editable, manual refresh, not exportable
 Security access level: 0
 Can be used: in result, in condition, in sort
 Object status: show

Object: **Pricing Method Description**
 Type: Character
 Description: This is the description of the pricing method.
 Select equivalent: APP_CODE_PRICING_METHOD_CODE.DESCR

Where equivalent:

Qualification: dimension
 List of values: no
 Security access level: 0
 Can be used: in result, in condition, in sort
 Object status: show

Object: **Product Status Code**
 Type: Character
 Description: This is the status of the product. It dictates whether the product can be seen on the order entry screens. This comes from system types and codes and this is not a fixed type. Possible values could be 'A' - Active, 'C' - Cancelled, 'D' - Discontinued.
 Select equivalent: PRODUCT.PRODUCT_STATUS_CODE

Where equivalent:

Qualification: dimension
List of values: 00j, editable, manual refresh, not exportable
Security access level: 0
Can be used: in result, in condition, in sort
Object status: show

Object: **Product Status Description**
Type: Character
Description: This is the description of the product status.
Select equivalent: APP_CODE_PRODUCT_STATUS_CODE.DESCR

Where equivalent:

Qualification: dimension
List of values: no
Security access level: 0
Can be used: in result, in condition, in sort
Object status: show

Object: **Package Discount Percentage**
Type: Number
Description:

This is the discount offered when a package is bought by the customer. If three products are part of a package then a customer may get a percentage discount on buying all three products as part of the package.

Select equivalent: PRODUCT.PACKAGE_DISCOUNT_PCT

Where equivalent:

Qualification: dimension
List of values: no
Security access level: 0
Can be used: in result, in condition, in sort
Object status: show

Object: **Product Status Date**
Type: Date

Description: This is the date when the status of the product was last changed.
Select equivalent: PRODUCT.PRODUCT_STATUS_DATE

Where equivalent:

Qualification: dimension
List of values: no
Security access level: 0
Can be used: in result, in condition, in sort
Object status: show

Object: **Available Date**
Type: Date
Description: This is the date when the product is available for sale.
Select equivalent: PRODUCT.AVAILABLE_DATE

Where equivalent:

Qualification: dimension
List of values: no
Security access level: 0
Can be used: in result, in condition, in sort
Object status: show

Object: **Expiration Date**
Type: Date
Description: This is the expiration date of the product. After this date the product cannot be sold.
Select equivalent: PRODUCT.EXPIRATION_DATE

Where equivalent:

Qualification: dimension
List of values: no
Security access level: 0
Can be used: in result, in condition, in sort
Object status: show

Object: **Date Created**
Type: Date
Description: This is the date when the product was created.
Select equivalent: PRODUCT.ADDDATE

Where equivalent:

Qualification: dimension
List of values: no
Security access level: 0
Can be used: in result, in condition, in sort
Object status: show

Object: **Product URL**
Type: Character
Description: This is the URL of the product.
Select equivalent: PRODUCT.PRODUCT_URL

Where equivalent:

Qualification: dimension
List of values: no
Security access level: 0
Can be used: in result, in condition, in sort
Object status: show

Object: **Package Selection Type Code**
Type: Character
Description: This is the way in which the components of a package will be selected. This comes from system types and codes and is a fixed type. Possible values are 'FIXED', 'OPEN', 'SELECT'.
Select equivalent: PRODUCT.PACKAGE_SELECTION_TYPE_CODE

Where equivalent:

Qualification: dimension
List of values: 00r, editable, manual refresh, not exportable
Security access level: 0
Can be used: in result, in condition, in sort
Object status: show

Object: **Package Selection Type Description**
Type: Character
Description: This is the description of the package selection type.
Select equivalent: APP_CODE_PACKAGE_SELECTION_CODE.DESCR

Where equivalent:

Qualification: dimension
List of values: no
Security access level: 0
Can be used: in result, in condition, in sort
Object status: show

Object: **Organization ID**
Type: Character
Description: This is the Organization Id of the Organization which owns the product.
Select equivalent: PRODUCT.ORG_ID

Where equivalent:

Qualification: dimension
List of values: no
Security access level: 0
Can be used: in result, in condition, in sort
Object status: show

Object: **Organization Unit ID**
Type: Character
Description: This is the Organization Unit Id of the Organization which owns the product.
Select equivalent: PRODUCT.ORG_UNIT_ID

Where equivalent:

Qualification: dimension
List of values: no
Security access level: 0
Can be used: in result, in condition, in sort
Object status: show

Object: **Product ID**
Type: Number
Description: This is the product id of the product. This is a sequential number assigned by the system. This uniquely identifies a product in the system.

Select equivalent: PRODUCT.PRODUCT_ID

Where equivalent:

Qualification: dimension
 List of values: no
 Security access level: 0
 Can be used: in result, in condition, in sort
 Object status: show

Object: **Is this a Master Product?**

Type: Character

Description: This identifies if the product is a master product. A master product can be sold by itself and has no dependencies on other products. An example of a master product would be a meeting.

Select equivalent: PRODUCT.MASTER_PRODUCT_FLAG

Where equivalent:

Qualification: dimension
 List of values: no
 Security access level: 0
 Can be used: in result, in condition, in sort
 Object status: show

Object: **Is this product available to orders?**

Type: Character

Description: This flag indicates that the product can be ordered and that the product is available for independent sale.

Select equivalent: PRODUCT.AVAILABLE_TO_ORDERS_FLAG

Where equivalent:

Qualification: dimension
 List of values: no
 Security access level: 0

Can be used: in result, in condition, in sort
Object status: show

Object: **Is this product renewable?**
Type: Character
Description: This identifies if the product is renewable.
Select equivalent: PRODUCT.RENEWABLE_FLAG

Where equivalent:

Qualification: dimension
List of values: no
Security access level: 0
Can be used: in result, in condition, in sort
Object status: show

Object: **Is this product returnable?**
Type: Character
Description: This flag indicates that the customers can return the product.
Select equivalent: PRODUCT.RETURNABLE_FLAG

Where equivalent:

Qualification: dimension
List of values: no
Security access level: 0
Can be used: in result, in condition, in sort
Object status: show

Object: **Is this product Valid?**
Type: Character
Description: This identifies if the product is valid.
Select equivalent: PRODUCT.VALID_FLAG

Where equivalent:

Qualification: dimension
List of values: no
Security access level: 0
Can be used: in result, in condition, in sort
Object status: show

Object: **Create Transaction?**
Type: Character
Description: This identifies if a transaction needs to be created when this product is sold.
Select equivalent: PRODUCT.CREATE_TRANSACTION_FLAG

Where equivalent:

Qualification: dimension
List of values: no
Security access level: 0
Can be used: in result, in condition, in sort
Object status: show

Object: **Is Price 0?**
Type: Character
Description: This identifies if the price of an product is \$0.
Select equivalent: PRODUCT.ZEROPRICE_FLAG

Where equivalent:

Qualification: dimension
List of values: no
Security access level: 0
Can be used: in result, in condition, in sort
Object status: show

Object: **Is this a members only product?**
Type: Character
Description: This flag indicates that the product is available to members only.
Select equivalent: PRODUCT.MEMBERS_ONLY_FLAG

Where equivalent:

Qualification: dimension
List of values: no
Security access level: 0
Can be used: in result, in condition, in sort
Object status: show

Object: **Can the price be updated directly?**
Type: Character
Description: This flag identifies if the price can be updated dire

ctly by user on the order
entry screen.
Select equivalent: PRODUCT.DIRECT_PRICE_UPDATE_FLAG

Where equivalent:

Qualification: dimension
List of values: no
Security access level: 0
Can be used: in result, in condition, in sort
Object status: show

Object: **Is this product eligible for Commission?**
Type: Character
Description: This identifies if the product is eligible for commission.
Select equivalent: PRODUCT.ELIGIBLE_FOR_COMMISSION_FLAG

Where equivalent:

Qualification: dimension
List of values: no
Security access level: 0
Can be used: in result, in condition, in sort
Object status: show

Class:	Rates and Pricing Setup
Description:	This class includes setup information about rate structure, rate code and pricing of a product.

No objects

Class:	Rate Code Detail
Description:	This class includes detailed information about the rate structure and rate code for product

Object: **Rate Structure Code**
Type: Character
Description: This is the structure that defines the customer. They are defined during the system setup. Certain customers such as members vs. non-members receive special rates. The rates for th

ese structures are defined
in the rate code.
Select equivalent: PRODUCT_RATE_CODE.RATE_STRUCTURE

Where equivalent:

Qualification: dimension
List of values: 017, editable, manual refresh, not exportable
Security access level: 0
Can be used: in result, in condition, in sort
Object status: show

Object: **Rate Structure Description**
Type: Character
Description: This is the description of the rate structure.
Select equivalent: RATE_STRUCTURE_DESCRIPTION.DESCR

Where equivalent:

Qualification: dimension
List of values: no
Security access level: 0
Can be used: in result, in condition, in sort
Object status: show

Object: **Rate Code**
Type: Character
Description: The established rate determines the pricing for the rate structure selected. Rate code can be used to define the type of service being provided. Several combinations of rate structure and rate code can be defined for each product. E.g. Rate Structure - 'LIST', Rate Code - '1 Year Membership', Rate Structure - 'LIST', Rate Code - '2 Year Membership' etc..
Select equivalent: PRODUCT_RATE_CODE.RATE_CODE

Where equivalent:

Qualification: dimension
 List of values: 019, editable, manual refresh, not exportable
 Security access level: 0
 Can be used: in result, in condition, in sort
 Object status: show

Object: **Rate Code Description**
 Type: Character
 Description: This is the description of the rate code.
 Select equivalent: Product_Rate_Code_Descr_VW.DESCR
 Where equivalent:

Qualification: dimension
 List of values: no
 Security access level: 0
 Can be used: in result, in condition, in sort
 Object status: show

Object: **Rate Description**
 Type: Character
 Description: This is the description of
 the rate which is a combi
 nation of rate structure a
 nd rate code.
 Select equivalent: PRODUCT_RATE_CODE.DESCR

Where equivalent:

Qualification: dimension
 List of values: no
 Security access level: 0
 Can be used: in result, in condition, in sort
 Object status: show

Object: **Priority**
 Type: Number
 Description: Determines the order the rates display in the Order Entry screen.
 Select equivalent: PRODUCT_RATE_CODE.SORT_ORDER

Where equivalent:

Qualification: measure
 Aggregate function: None

List of values: no
 Security access level: 0
 Can be used: in result, in condition, in sort
 Object status: show

Object: **Short Pay Code**
 Type: Character
 Description: This fixed code indicates how the system handles short payment situations. Options include:
 •Adjust: Accept whatever is paid.
 •AR: Create Receivable - Indicates that the order can be placed with or without payment. The unpaid portion is considered an accounts receivable for the customer.
 •Reject: Do not activate Order unless fully paid.
 Select equivalent: PRODUCT_RATE_CODE.SHORT_PAY_PROC_CODE
 Where equivalent:
 Qualification: dimension
 List of values: 01d, editable, manual refresh, not exportable
 Security access level: 0
 Can be used: in result, in condition, in sort
 Object status: show

Object: **Short Pay Description**
 Type: Character
 Description: This is the description of the short pay code.
 Select equivalent: APP_CODE_SHORT_PAY_CODE.DESCR
 Where equivalent:
 Qualification: dimension
 List of values: no
 Security access level: 0
 Can be used: in result, in condition, in sort
 Object status: show

Object: **Default Ship Via Code**
Type: Character
Description: Specifies how the product is to be shipped, e.g., by Federal Express, United Parcel Service, or United States Postal Service.
Select equivalent: PRODUCT_RATE_CODE.DEFAULT_SHIP_VIA_CODE
Where equivalent:
Qualification: dimension
List of values: 01f, editable, manual refresh, not exportable
Security access level: 0
Can be used: in result, in condition, in sort
Object status: show

Object: **Default Ship Via Description**
Type: Character
Description: This is the description of the default ship via.
Select equivalent: APP_CODE_SHIP_VIA_CODE.DESCR
Where equivalent:
Qualification: dimension
List of values: no
Security access level: 0
Can be used: in result, in condition, in sort
Object status: show

Object: **Agency Discount Percentage**
Type: Number
Description: The percentage to be applied for an agency discount when creating an order for this product.
Select equivalent: PRODUCT_RATE_CODE.AGENCY_DISCOUNT_PCT
Where equivalent:
Qualification: measure
Aggregate function: None
List of values: no
Security access level: 0

Can be used: in result, in condition, in sort
Object status: show

Object: **Pay Frequency Code**
Type: Character
Description: This is the payment frequency. The possible values are 'INVOICE' and 'MONTHLY'.
Select equivalent: PRODUCT_RATE_CODE.PAY_FREQUENCY_CODE

Where equivalent:

Qualification: dimension
List of values: 01i, editable, manual refresh, not exportable
Security access level: 0
Can be used: in result, in condition, in sort
Object status: show

Object: **Pay Frequency Description**
Type: Character
Description: This is the description of the pay frequency.
Select equivalent: APP_CODE_PAY_FREQUENCY_CODE.DESCR

Where equivalent:

Qualification: dimension
List of values: no
Security access level: 0
Can be used: in result, in condition, in sort
Object status: show

Object: **Renew As Product Code**
Type: Character
Description: This is the product code to which a particular rate will renew to when user renews subscription/membership product.
Select equivalent: PRODUCT_RATE_CODE.RENEW_AS_PRODUCT_CODE

Where equivalent:

Qualification: dimension
List of values: 01k, editable, manual refresh, not exportable
Security access level: 0

Can be used: in result, in condition, in sort
Object status: show

Object: **Renew As Product Short Name**
Type: Character
Description: This is the short name of the renew as product.
Select equivalent: PRODUCT_RENEW_AS_PRODUCT.SHORT_NAME

Where equivalent:

Qualification: dimension
List of values: no
Security access level: 0
Can be used: in result, in condition, in sort
Object status: show

Object: **Renew As Product Long Name**
Type: Character
Description: This is the long name of the renew as product.
Select equivalent: PRODUCT_RENEW_AS_PRODUCT.LONG_NAME

Where equivalent:

Qualification: dimension
List of values: no
Security access level: 0
Can be used: in result, in condition, in sort
Object status: show

Object: **Renew As Product Type Code**
Type: Character
Description: This is the Product Type for the renew as Product.
Select equivalent: PRODUCT_RENEW_AS_PRODUCT.PRODUCT_TYPE_CODE

Where equivalent:

Qualification: dimension
List of values: 01n, editable, manual refresh, not exportable
Security access level: 0
Can be used: in result, in condition, in sort
Object status: show

Object: **Renew As Product Type Description**
Type: Character
Description: This is the description of the product type that the product renews to.
Select equivalent: APP_CODE_RENEW_PRODUCT_TYPE_CODE.DESCR

Where equivalent:

Qualification: dimension
List of values: no
Security access level: 0
Can be used: in result, in condition, in sort
Object status: show

Object: **Renew As Product Class Code**
Type: Character
Description: This is the renew as product's product class.
Select equivalent: PRODUCT_RENEW_AS_PRODUCT.PRODUCT_CLASS_CODE

Where equivalent:

Qualification: dimension
List of values: 01p, editable, manual refresh, not exportable
Security access level: 0
Can be used: in result, in condition, in sort
Object status: show

Object: **Renew As Product Class Description**
Type: Character
Description: This is the description of the renew as product's product class
Select equivalent: APP_CODE_RENEW_PRODUCT_CLASS_CODE.DESCR

Where equivalent:

Qualification: dimension
List of values: no
Security access level: 0
Can be used: in result, in condition, in sort
Object status: show

Object: **Renew As Rate Structure**
Type: Character
Description: This is the renew as rate structure.
Select equivalent: PRODUCT_RATE_CODE.RENEW_AS_RATE_STRUCTURE

Where equivalent:

Qualification: dimension
 List of values: no
 Security access level: 0
 Can be used: in result, in condition, in sort
 Object status: show

Object: **Renew As Rate Code**
 Type: Character
 Description: This is the renew as rate code.
 Select equivalent: Product_Rate_Code_Renewal_Descr_VW.RENEW_AS_RATE_CODE
 Where equivalent:

Qualification: dimension
 List of values: 01s, editable, manual refresh, not exportable
 Security access level: 0
 Can be used: in result, in condition, in sort
 Object status: show

Object: **Renew As Rate Code Description**
 Type: Character
 Description: This is the description of the renew as rate code.
 Select equivalent: Product_Rate_Code_Renewal_Descr_VW.DESCR
 Where equivalent:

Qualification: dimension
 List of values: 05q, editable, manual refresh, not exportable
 Security access level: 0
 Can be used: in result, in condition, in sort
 Object status: show

Object: **Max Badges**
 Type: Number
 Description: This is the number of maximum badges that will allotted to a rate.
 Select equivalent: PRODUCT_RATE_CODE.MAX_BADGES

Where equivalent:

Qualification: measure
 Aggregate function: None
 List of values: no

Security access level: 0
Can be used: in result, in condition, in sort
Object status: show

Object: **Grace Units**
Type: Number
Description: The number of units that is typical for continuing member benefits prior to cancelling a membership for non-renewal.
Select equivalent: PRODUCT_RATE_CODE.GRACE_UNITS

Where equivalent:

Qualification: measure
Aggregate function: None
List of values: no
Security access level: 0
Can be used: in result, in condition, in sort
Object status: show

Object: **Include in Audit**
Type: Character
Description: This flag indicates whether the subscription is to be included for auditing purposes.
Select equivalent: PRODUCT_RATE_CODE.INCLUDE_IN_AUDIT_FLAG

Where equivalent:

Qualification: dimension
List of values: no
Security access level: 0
Can be used: in result, in condition, in sort
Object status: show

Object: **Audit Type Code**
Type: Character
Description: This code identifies the type of audit for subscriptions.
Select equivalent: PRODUCT_RATE_CODE.AUDIT_TYPE_CODE

Where equivalent:

Qualification: dimension
List of values: 01w, editable, manual refresh, not exportable
Security access level: 0
Can be used: in result, in condition, in sort

Object status: show

Object: **Audit Type Description**
Type: Character
Description: This is the description of the audit type.
Select equivalent: APP_CODE_AUDIT_TYPE_CODE.DESCR

Where equivalent:

Qualification: dimension
List of values: no
Security access level: 0
Can be used: in result, in condition, in sort
Object status: show

Object: **Sales Commission Percentage**
Type: Number
Description: If the product is flagged as "Eligible for Commission," this is the total sales commission percentage that is calculated for the sales representative(s) assigned to the order lines for this product.
Select equivalent: PRODUCT_RATE_CODE.SALES_COMMISSION_PCT

Where equivalent:

Qualification: measure
Aggregate function: None
List of values: no
Security access level: 0
Can be used: in result, in condition, in sort
Object status: show

Object: **Component Package ID**
Type: Number
Description: This is a uniquely generated number that identifies the package component.
Select equivalent: PRODUCT_RATE_CODE.COMPONENT_PACKAGE_ID

Where equivalent:

Qualification: measure
Aggregate function: None
List of values: no
Security access level: 0
Can be used: in result, in condition, in sort
Object status: show

Object: **Is Rate Code Active?**
Type: Character
Description: This flag identifies that the rate code is Active.
Select equivalent: PRODUCT_RATE_CODE.ACTIVE_FLAG

Where equivalent:

Qualification: dimension
List of values: no
Security access level: 0
Can be used: in result, in condition, in sort
Object status: show

Object: **Default Rate?**
Type: Character
Description: This flag identifies if the rate code is the default rate code.
Select equivalent: PRODUCT_RATE_CODE.DEFAULT_RATE_FLAG

Where equivalent:

Qualification: dimension
List of values: no
Security access level: 0
Can be used: in result, in condition, in sort
Object status: show

Object: **Is this Rate Code Available on the Web?**
Type: Character
Description: This flag identifies if the rate code is available on the web.
Select equivalent: PRODUCT_RATE_CODE.ECOMMERCE_FLAG

Where equivalent:

Qualification: dimension
List of values: no
Security access level: 0

Can be used: in result, in condition, in sort
 Object status: show

Object: **Default Web Rate?**
 Type: Character
 Description: This flag identifies if the rate code is the default for the web.
 Select equivalent: PRODUCT_RATE_CODE.DEFAULT_RATE_WEB_FLAG

Where equivalent:

Qualification: dimension
 List of values: no
 Security access level: 0
 Can be used: in result, in condition, in sort
 Object status: show

Object: **Waive Shipping Charges?**
 Type: Character
 Description: This flag identifies if the shipping charges should be waived for the rate code . When checked, the shipping will be waived for any products shipped to the customer.
 Select equivalent: PRODUCT_RATE_CODE.WAIVE_SHIPPING_FLAG

Where equivalent:

Qualification: dimension
 List of values: no
 Security access level: 0
 Can be used: in result, in condition, in sort
 Object status: show

Object: **Prorate Amount?**
 Type: Character
 Description: When checked, when an order is placed with this rate code, the rate amount will prorate evenly over the course of the length of the membership. For example, if the membership rate amount is \$120 and the membership runs from January to December, an order placed in January will have a default rate amount of \$120. However, if an order is placed in February, the default rate amount will be \$110. It defaults to checked if the

Select equivalent: membership is set to Prorate on the Membership Structure Definition MBR000 screen.
PRODUCT_RATE_CODE.PRORATE_AMOUNT_FLAG

Where equivalent:

Qualification: dimension
List of values: no
Security access level: 0
Can be used: in result, in condition, in sort
Object status: show

Object: **Back Issues?**
Type: Character
Description: This flag indicates if back issues need to be given for the rate code.
Select equivalent: PRODUCT_RATE_CODE.BACK_ISSUES_FLAG

Where equivalent:

Qualification: dimension
List of values: no
Security access level: 0
Can be used: in result, in condition, in sort
Object status: show

Class: Pricing Detail
Description: This class includes information related to product pricing.

Object: **Price Begin Date**
Type: Date
Description: This is the effective date for the pricing.
Select equivalent: PRODUCT_PRICING.PRICE_BEGIN_DATE

Where equivalent:

Qualification: dimension
List of values: no
Security access level: 0
Can be used: in result, in condition, in sort
Object status: show

Object: **Price End Date**
Type: Date
Description: This is the effective end date for pricing.
Select equivalent: PRODUCT_PRICING.PRICE_END_DATE

Where equivalent:

Qualification: dimension
List of values: no
Security access level: 0
Can be used: in result, in condition, in sort
Object status: show

Object: **Minimum Adjusted Price**
Type: Number
Description: Controls various aspects of the behavior of an order depending on the Short Pay value. This is the price that must be paid prior to the line item being considered active.
Select equivalent: PRODUCT_PRICING.MIN_PRICE

Where equivalent:

Qualification: measure
Aggregate function: None
List of values: no
Security access level: 0
Can be used: in result, in condition, in sort
Object status: show

Object: **Maximum Adjusted Price**
Type: Number
Description: Controls adjustable pricing and is ignored for other short-pay codes. When the Short Pay code is ADJUST, the system adjusts up only to this price.
Select equivalent: PRODUCT_PRICING.MAX_PRICE

Where equivalent:

Qualification: measure
Aggregate function: None
List of values: no
Security access level: 0
Can be used: in result, in condition, in sort
Object status: show

Object: **Maximun Auto Writeoff**
Type: Number

Description: Controls what amount is acceptable as a final price.
Select equivalent: PRODUCT_PRICING.WRITEOFF_TOLERANCE

Where equivalent:

Qualification: measure
Aggregate function: None
List of values: no
Security access level: 0
Can be used: in result, in condition, in sort
Object status: show

Object: **Price**
Type: Number
Description: The price charged for the product prior to any applicable discounts.
Select equivalent: PRODUCT_PRICING.PRICE

Where equivalent:

Qualification: measure
Aggregate function: None
List of values: no
Security access level: 0
Can be used: in result, in condition, in sort
Object status: show

Object: **Taxable Amount**
Type: Number
Description: Exists for products where only a portion of the product is taxable.
Select equivalent: PRODUCT_PRICING.TAXABLE_AMOUNT

Where equivalent:

Qualification: measure
Aggregate function: None
List of values: no
Security access level: 0
Can be used: in result, in condition, in sort
Object status: show

Object: **Schedule ID**
Type: Character

Description: This identifies the membership dues schedule to be used.
 Select equivalent: PRODUCT_PRICING.SCHEDULE_ID

Where equivalent:

Qualification: dimension
 List of values: no
 Security access level: 0
 Can be used: in result, in condition, in sort
 Object status: show

Object: **Currency Code**
 Type: Character
 Description: This is the currency of the product price.
 Select equivalent: PRODUCT_PRICING.CURRENCY_CODE

Where equivalent:

Qualification: dimension
 List of values: 02k, editable, manual refresh, not exportable
 Security access level: 0
 Can be used: in result, in condition, in sort
 Object status: show

Object: **Fair Market Value**
 Type: Number
 Description: This is the fair market value of the product. For example, a fee for a fundraising dinner (which has been defined as a meeting product) is \$100. The fair market value of the meal is \$20.00. The donor would get tax credit for a donation of \$80.

Select equivalent: PRODUCT_PRICING.FAIR_MARKET_VALUE

Where equivalent:

Qualification: measure
 Aggregate function: None
 List of values: no

Security access level: 0
 Can be used: in result, in condition, in sort
 Object status: show

Object: **Price Percentage**
 Type: Number
 Description:

Select equivalent: PRODUCT_PRICING.PRICE_PCT

Where equivalent:

Qualification: measure
 Aggregate function: None
 List of values: no
 Security access level: 0
 Can be used: in result, in condition, in sort
 Object status: show

Object: **Use Schedule?**
 Type: Character
 Description: This flag indicates if a schedule should be used for pricing.
 Select equivalent: PRODUCT_PRICING.USE_SCHEDULE_FLAG

Where equivalent:

Qualification: dimension
 List of values: no
 Security access level: 0
 Can be used: in result, in condition, in sort
 Object status: show

Class: Default Product Accounts
Description: This class includes information about the default product accounts.

Object: **Effective Begin Date**
 Type: Date
 Description: This is the effective begin date for the GL account.
 Select equivalent: PRODUCT_ACCOUNT.EFFECTIVE_BEGIN_DATE

Where equivalent:

Qualification: dimension
 List of values: no

Security access level: 0
Can be used: in result, in condition, in sort
Object status: show

Object: **Effective End Date**
Type: Date
Description: This is the effective end date for the GL account.
Select equivalent: PRODUCT_ACCOUNT.EFFECTIVE_BEGIN_DATE

Where equivalent:

Qualification: dimension
List of values: no
Security access level: 0
Can be used: in result, in condition, in sort
Object status: show

Object: **AR Account**
Type: Character
Description: This is the receivable account that will be used for sales and receipt transactions. The account must exist for a company referenced in the current Org Unit ID and must be an asset account.
Select equivalent: PRODUCT_ACCOUNT.AR_ACCOUNT

Where equivalent:

Qualification: dimension
List of values: no
Security access level: 0
Can be used: in result, in condition, in sort
Object status: show

Object: **PPL Account**
Type: Character
Description: This is the account that is used to store payments prior to invoicing. It must be valid for a company referenced in the current Org Unit ID and it must be a liability account.
Select equivalent: PRODUCT_ACCOUNT.PPL_ACCOUNT

Where equivalent:

Qualification: dimension
 List of values: no
 Security access level: 0
 Can be used: in result, in condition, in sort
 Object status: show

Object: **Writeoff Account**

Type: Character

Description: This is the writeoff account. This is the account that is used to store payments prior to invoicing. It must be valid for a company referenced in the current Org Unit ID and it must be a liability account.

Select equivalent: PRODUCT_ACCOUNT.WRITEOFF_ACCOUNT

Where equivalent:

Qualification: dimension
 List of values: no
 Security access level: 0
 Can be used: in result, in condition, in sort
 Object status: show

Object: **Cancellation Account**

Type: Character

Description: When cancellation fees are charged, this account is used. It is typically an unearned income account, though it may also be defined as an expense account.

Select equivalent: PRODUCT_ACCOUNT.CANCELLATION_ACCOUNT

Where equivalent:

Qualification: dimension
 List of values: no
 Security access level: 0
 Can be used: in result, in condition, in sort
 Object status: show

Object: **Discount Account**
Type: Character
Description: When a discount is granted for this product, this account number is used. It reduces the AR number while maintaining the full revenue account amount. It may be either a revenue or expense account. Entry defaults the deferred discount account to the same account.
Select equivalent: PRODUCT_ACCOUNT.DISCOUNT_ACCOUNT
Where equivalent:

Qualification: dimension
List of values: no
Security access level: 0
Can be used: in result, in condition, in sort
Object status: show

Object: **Deferred Discount Account**
Type: Character
Description: When a deferred revenue transaction is created, this account is used. If no deferred transactions are expected, this account should be the same as the discount account.
Select equivalent: PRODUCT_ACCOUNT.DEFERRED_DISCOUNT_ACCOUNT
Where equivalent:

Qualification: dimension
List of values: no
Security access level: 0
Can be used: in result, in condition, in sort
Object status: show

Object: **Agency Discount Account**
Type: Character
Description: When a discount is granted to the agency for this product, this account number is used. It reduces the AR number while maintaining the full revenue account amount. It may be either a revenue or expense account. Entry defaults the deferred discount account to the same account.
Select equivalent: PRODUCT_ACCOUNT.AGENCY_DISC_ACCOUNT
Where equivalent:

Qualification: dimension
List of values: no

Security access level: 0
Can be used: in result, in condition, in sort
Object status: show

Object: **Agency Deferred Discount Account**
Type: Character
Description: When a deferred revenue transaction is created for an agency, this account is used. If no deferred transactions are expected, this account should be the same as the agency discount account.
Select equivalent: PRODUCT_ACCOUNT.AGENCY_DEFERRED_DISC_ACCOUNT

Where equivalent:

Qualification: dimension
List of values: no
Security access level: 0
Can be used: in result, in condition, in sort
Object status: show

Object: **Deferred Shipping Account**
Type: Character
Description: This is the deferred shipping account.
Select equivalent: PRODUCT_ACCOUNT.DEFERRED_SHIPPING_ACCOUNT

Where equivalent:

Qualification: dimension
List of values: no
Security access level: 0
Can be used: in result, in condition, in sort
Object status: show

Object: **Trade for Services Account**
Type: Character
Description: This is the account to be used for trade for services in exhibition setup.
Select equivalent: PRODUCT_ACCOUNT.TRADE_FOR_SERVICES_ACCOUNT

Where equivalent:

Qualification: dimension
List of values: no
Security access level: 0
Can be used: in result, in condition, in sort

Object status: show

Object: **Space Credit Account**
Type: Character
Description: This is the account for space credits in exhibition setup.
Select equivalent: PRODUCT_ACCOUNT.SPACE_CREDIT_ACCOUNT

Where equivalent:

Qualification: dimension
List of values: no
Security access level: 0
Can be used: in result, in condition, in sort
Object status: show

Object: **InKind Expense Account**
Type: Character
Description: This is the account to be used for inkind expenses.
Select equivalent: PRODUCT_ACCOUNT.IN_KIND_EXPENSE_ACCOUNT

Where equivalent:

Qualification: dimension
List of values: no
Security access level: 0
Can be used: in result, in condition, in sort
Object status: show

Object: **Fund Asset Account**
Type: Character
Description: This is the fund asset account
Select equivalent: PRODUCT_ACCOUNT.FND_ASSET_ACCOUNT

Where equivalent:

Qualification: dimension
List of values: no
Security access level: 0
Can be used: in result, in condition, in sort
Object status: show

Class: Revenue Account Pair Description: This class includes information about revenue account pairs for products.
--

Object:	Revenue Account
Type:	Character
Description:	This field is the offsetting income account. This is the account that will be used by a revenue recognition process. It is validated against the FGL_Account_Master table. However, a warning message, which is validated against the fgl_revenue_account_pair, will display if an account is selected that is not for the organization unit of the product. It must be a revenue account.
Select equivalent:	PRODUCT_REVENUE_DISTRIBUTION.REVENUE_ACCOUNT
Where equivalent:	
Qualification:	dimension
List of values:	no
Security access level:	0
Can be used:	in result, in condition, in sort
Object status:	show

Object:	Deferred Revenue Account
Type:	Character
Description:	This is the account that is used for sales transactions. If no deferred revenue is to be recorded, this should be a standard revenue account. When defining accounts for a situation where there is no deferred revenue recognition, the deferred and recognized accounts will both be defined as the same real revenue account.
Select equivalent:	PRODUCT_REVENUE_DISTRIBUTION.DEFERRED_ACCOUNT

Where equivalent:

Qualification: dimension
 List of values: no
 Security access level: 0
 Can be used: in result, in condition, in sort
 Object status: show

Object: **Effective Begin Date for the Revenue Account Pair**

Type: Date

Description: This field indicates the date on which this distribution will begin to be used as compared to the order date. Each time a change is made to the distribution accounts, a new start date must be defined for this distribution so that a history and an audit trail can be maintained.

Select equivalent: PRODUCT_REVENUE_DISTRIBUTION.EFFECTIVE_BEGIN_DATE

Where equivalent:

Qualification: dimension
 List of values: no
 Security access level: 0
 Can be used: in result, in condition, in sort
 Object status: show

Object: **Effective End Date for the Revenue Account Pair**

Type: Date

Description: The end date for the Revenue account.

Select equivalent: PRODUCT_REVENUE_DISTRIBUTION.EFFECTIVE_END_DATE

Where equivalent:

Qualification: dimension
 List of values: no
 Security access level: 0
 Can be used: in result, in condition, in sort
 Object status: show

Object: **Linked Product Code**
Type: Character
Description: The code or abbreviation for the product linked with a General Ledger Distribution pair.
Select equivalent: LINKED_PRODUCT.PRODUCT_CODE

Where equivalent:

Qualification: dimension
List of values: 03e, editable, manual refresh, not exportable
Security access level: 0
Can be used: in result, in condition, in sort
Object status: show

Object: **Linked Product Short Name**
Type: Character
Description: The short name for the product linked with a General Ledger Distribution pair.
Select equivalent: LINKED_PRODUCT.SHORT_NAME

Where equivalent:

Qualification: dimension
List of values: no
Security access level: 0
Can be used: in result, in condition, in sort
Object status: show

Object: **Linked Product Long Name**
Type: Character
Description: The long name for the product linked with a General Ledger Distribution pair.
Select equivalent: LINKED_PRODUCT.LONG_NAME

Where equivalent:

Qualification: dimension
List of values: no
Security access level: 0
Can be used: in result, in condition, in sort
Object status: show

Object: **Revenue Distribution Method Code**
Type: Character
Description: The value selected in this

field automatically updates all detail records for this effective date. Valid values include:

- Percentage – Will distribute by percentage of the price only. The Priority and Amount within Priority columns are disabled.
- Priority – Enables the Priority and Amount within Priority columns. When discounts or other pricing situations result in a line item not receiving its full amount, the first priority item will receive its full amount and then the next priority item in sequence. If no amount is specified, the system will distribute the remaining amount by percentage.

Select equivalent: PRODUCT_REVENUE_DISTRIBUTION.DISTRIBUTION_METHOD_CODE

Where equivalent:

Qualification: dimension
 List of values: 03h, editable, manual refresh, not exportable
 Security access level: 0
 Can be used: in result, in condition, in sort
 Object status: show

Object: **Revenue Distribution Method Description**
 Type: Character
 Description: This is the description of the revenue distribution method.
 Select equivalent: APP_CODE_REV_DISTRIBUTION_CODE.DESCR

Where equivalent:

Qualification: dimension
 List of values: no
 Security access level: 0
 Can be used: in result, in condition, in sort
 Object status: show

Object: **Revenue Distribution Percentage**
Type: Number
Description: This field is the percentage of the revenue that should go to this account. The total percentages of all line items must equal 100 for the record to be saved (format 000.0000).
Select equivalent: PRODUCT_REVENUE_DISTRIBUTION.DISTRIBUTION_PCT
Where equivalent:
Qualification: dimension
List of values: no
Security access level: 0
Can be used: in result, in condition, in sort
Object status: show

Object: **Revenue Distribution Priority**
Type: Number
Description: This field is only enabled when the Distribution Method is "Priority." When discounts or other pricing situations result in a line item not receiving its full amount, the first priority item will receive its full amount and then the next priority item in sequence.
Select equivalent: PRODUCT_REVENUE_DISTRIBUTION.PRIORITY
Where equivalent:
Qualification: dimension
List of values: no
Security access level: 0
Can be used: in result, in condition, in sort
Object status: show

Object: **Amount Within Priority**
Type: Number
Description: This field is only enabled when the Distribution Method is "Priority." When populated and when the amount to be distributed (because of discounts or other pricing) falls lower than the amount specified with this line item, the amounts will be filled based on this priority.
Select equivalent: PRODUCT_REVENUE_DISTRIBUTION.MINIMUM_AMOUNT
Where equivalent:
Qualification: dimension
List of values: no
Security access level: 0
Can be used: in result, in condition, in sort
Object status: show

Class: Shipping Charges Setup Description: This class includes details about shipping charges setup for a product.
--

Object: **Ship Via Code**
Type: Character
Description: The name of the entity used for shipping the order, e.g., UPS, USPS, FedEx.
Select equivalent: PRODUCT_SHIPPING.SHIP_VIA_CODE
Where equivalent:
Qualification: dimension
List of values: 03m, editable, manual refresh, not exportable
Security access level: 0
Can be used: in result, in condition, in sort
Object status: show

Object: **Ship Via Description**
Type: Character
Description: This is the description of the ship via.
Select equivalent: APP_CODE_SHIP_VIA_CODE.DESCR
Where equivalent:

Qualification:	dimension
List of values:	no
Security access level:	0
Can be used:	in result, in condition, in sort
Object status:	show

Object:	Effective Begin Date
Type:	Date
Description:	This is the effective date for the shipping fee. On this date, as compared to the order date, this fee will be charged.
Select equivalent:	PRODUCT_SHIPPING.EFFECTIVE_BEGIN_DATE
Where equivalent:	

Qualification:	dimension
List of values:	no
Security access level:	0
Can be used:	in result, in condition, in sort
Object status:	show

Object:	Effective End Date
Type:	Date
Description:	This is the end date of the shipping fee. System maintained field that indicates the end date of this rate. A trigger will set this as the day before the next rate defined.
Select equivalent:	PRODUCT_SHIPPING.EFFECTIVE_END_DATE
Where equivalent:	

Qualification:	dimension
List of values:	no
Security access level:	0
Can be used:	in result, in condition, in sort
Object status:	show

Object: **Shipping Calculation Method Code**
Type: Character
Description: This specifies how the Ship-Via organization calculates the shipping charge. For example, By Price or By Weight.
Select equivalent: PRODUCT_SHIPPING.SHIPPING_CALCULATION_CODE
Where equivalent:
Qualification: dimension
List of values: 03q, editable, manual refresh, not exportable
Security access level: 0
Can be used: in result, in condition, in sort
Object status: show

Object: **Shipping Calculation Method Description**
Type: Character
Description: This is the description of the shipping calculation method.
Select equivalent: APP_CODE_SHIP_CALC_METHOD_CODE.DESCR
Where equivalent:
Qualification: dimension
List of values: no
Security access level: 0
Can be used: in result, in condition, in sort
Object status: show

Object: **Shipping Surcharge Amount**
Type: Number
Description: The amount of shipping that will be charged for this product over any other shipping amount.
Select equivalent: PRODUCT_SHIPPING.SURCHARGE_AMOUNT
Where equivalent:
Qualification: measure
Aggregate function: None
List of values: no
Security access level: 0

Can be used: in result, in condition, in sort
Object status: show

Object: **Shipping Override Amount**
Type: Number
Description: This amount will override any other shipping calculation for this product.
Select equivalent: PRODUCT_SHIPPING.OVERRIDE_AMOUNT

Where equivalent:

Qualification: measure
Aggregate function: None
List of values: no
Security access level: 0
Can be used: in result, in condition, in sort
Object status: show

Object: **Domestic or Foreign?**
Type: Character
Description: When defining a shipping charge, you can differentiate them between domestic charges and foreign charges. Personify allows you to define which countries are considered domestic.
Select equivalent: PRODUCT_SHIPPING.DOMESTIC_FOREIGN_FLAG

Where equivalent:

Qualification: dimension
List of values: no
Security access level: 0
Can be used: in result, in condition, in sort
Object status: show

Class: Cancellation Fees Setup
Description: This class includes information about cancellation fees setup.

Object: **Effective Begin Date**
Type: Date
Description: This is the date when the returned or cancellation fee will be charged.
Select equivalent: PRODUCT_CANCEL_FEE.EFFECTIVE_BEGIN_DATE
Where equivalent:

Qualification: dimension
List of values: no
Security access level: 0
Can be used: in result, in condition, in sort
Object status: show

Object: **Effective End Date**
Type: Date
Description: System-maintained field that indicates the end date of this rate. This date is set by a trigger and is calculated based on the day before the next cancellation fee is defined.
Select equivalent: PRODUCT_CANCEL_FEE.EFFECTIVE_END_DATE

Where equivalent:

Qualification: dimension
List of values: no
Security access level: 0
Can be used: in result, in condition, in sort
Object status: show

Object: **Cancellation Amount**
Type: Number
Description: This is the fixed amount that will be charged if an order is cancelled or returned.
Select equivalent: PRODUCT_CANCEL_FEE.CANCEL_AMOUNT

Where equivalent:

Qualification: measure
Aggregate function: None
List of values: no
Security access level: 0
Can be used: in result, in condition, in sort
Object status: show

Object: **Cancellation Percentage**
Type: Number
Description: This is the percentage of the product price that is charged as a cancellation fee.

Select equivalent: PRODUCT_CANCEL_FEE.CANCEL_PCT

Where equivalent:

Qualification: dimension
 List of values: no
 Security access level: 0
 Can be used: in result, in condition, in sort
 Object status: show

Object: **Currency Code**
 Type: Character
 Description: This is the currency code of the cancellation fee.
 Select equivalent: PRODUCT_CANCEL_FEE.CURRENCY_CODE

Where equivalent:

Qualification: dimension
 List of values: 040, editable, manual refresh, not exportable
 Security access level: 0
 Can be used: in result, in condition, in sort
 Object status: show

Object: **Schedule ID**
 Type: Character
 Description: If a schedule is to be used for the cancellation fee then this is the uniquely assigned number that identifies the schedule for cancellation.
 Select equivalent: PRODUCT_CANCEL_FEE.SCHEDULE_ID

Where equivalent:

Qualification: dimension
 List of values: no
 Security access level: 0
 Can be used: in result, in condition, in sort
 Object status: show

Object: **Use Schedule?**
 Type: Character

Description: This flag indicates if a schedule is to be used for the cancellation fee.
 Select equivalent: PRODUCT_CANCEL_FEE.USE_SCHEDULE_FLAG

Where equivalent:

Qualification: dimension
 List of values: no
 Security access level: 0
 Can be used: in result, in condition, in sort
 Object status: show

Class:	Package Component Setup
Description:	This class includes information about packages.

Object: **Package Parent Product Code**
 Type: Character
 Description: This is the parent product code of the package product.
 Select equivalent: PRODUCT_PCKG_COMPONENT.PARENT_PRODUCT

Where equivalent:

Qualification: dimension
 List of values: 045, editable, manual refresh, not exportable
 Security access level: 0
 Can be used: in result, in condition, in sort
 Object status: show

Object: **Package Product Code**
 Type: Character
 Description: This is the product code of the package.
 Select equivalent: PRODUCT_PCKG_COMPONENT.PRODUCT_CODE

Where equivalent:

Qualification: dimension
 List of values: 046, editable, manual refresh, not exportable
 Security access level: 0
 Can be used: in result, in condition, in sort
 Object status: show

Object: **Package Subsystem**
 Type: Character
 Description: This is the subsystem to which the package belongs to.
 Select equivalent: PRODUCT_PCKG_COMPONENT.SUBSYSTEM

Where equivalent:

Qualification: dimension
List of values: 047, editable, manual refresh, not exportable
Security access level: 0
Can be used: in result, in condition, in sort
Object status: show

Object: **Package Product Short Name**
Type: Character
Description: This is the short name of the package product.
Select equivalent: PRODUCT_PCKG_COMPONENT.SHORT_NAME

Where equivalent:

Qualification: dimension
List of values: no
Security access level: 0
Can be used: in result, in condition, in sort
Object status: show

Object: **Package Product Long Name**
Type: Character
Description: This is the long name of the package product.
Select equivalent: PRODUCT_PCKG_COMPONENT.LONG_NAME

Where equivalent:

Qualification: dimension
List of values: no
Security access level: 0
Can be used: in result, in condition, in sort
Object status: show

Object: **Package Quantity**
Type: Number
Description: This is the quantity of the package product that needs to be included in the package.
Select equivalent: PRODUCT_COMPONENT.COMPONENT_QTY

Where equivalent:

Qualification: measure

Aggregate function: None
 List of values: no
 Security access level: 0
 Can be used: in result, in condition, in sort
 Object status: show

Object: **Rate Method Code**
 Type: Character
 Description: This specifies how the rate needs to be calculated for the component of a package. Possible values are 'Specific' or 'Calculated'.
 Select equivalent: PRODUCT_COMPONENT.RATE_METHOD_CODE
 Where equivalent:
 Qualification: dimension
 List of values: 04b, editable, manual refresh, not exportable
 Security access level: 0
 Can be used: in result, in condition, in sort
 Object status: show

Object: **Rate Method Description**
 Type: Character
 Description: This is the description of the rate method.
 Select equivalent: APP_CODE_RATE_METHOD.DESCR
 Where equivalent:
 Qualification: dimension
 List of values: no
 Security access level: 0
 Can be used: in result, in condition, in sort
 Object status: show

Object: **Component Rate Structure Code**
 Type: Character
 Description: This is the rate structure for the component product.
 Select equivalent: PRODUCT_COMPONENT.RATE_STRUCTURE
 Where equivalent:

Qualification: dimension
List of values: 04d, editable, manual refresh, not exportable
Security access level: 0
Can be used: in result, in condition, in sort
Object status: show

Object: **Component Rate Code**
Type: Character
Description: This is the rate code for the component product.
Select equivalent: PRODUCT_COMPONENT.RATE_CODE

Where equivalent:

Qualification: dimension
List of values: 04e, editable, manual refresh, not exportable
Security access level: 0
Can be used: in result, in condition, in sort
Object status: show

Object: **Allowed Order Line Count**
Type: Number
Description: This specifies the number of order lines to be created for the component.
Select equivalent: PRODUCT_COMPONENT.ORDER_LINES_TO_BE_CREATED

Where equivalent:

Qualification: dimension
List of values: no
Security access level: 0
Can be used: in result, in condition, in sort
Object status: show

Object: **Related Component Parent Product Code**
Type: Character
Description: This is the parent product code of the component.
Select equivalent: PRODUCT_RELATED_COMPONENT.PARENT_PRODUCT

Where equivalent:

Qualification: dimension
List of values: 04g, editable, manual refresh, not exportable
Security access level: 0
Can be used: in result, in condition, in sort

Object status: show

Object: **Related Component Product Code**
Type: Character
Description: This is the product code of the component.
Select equivalent: PRODUCT_RELATED_COMPONENT.PRODUCT_CODE

Where equivalent:

Qualification: dimension
List of values: 04h, editable, manual refresh, not exportable
Security access level: 0
Can be used: in result, in condition, in sort
Object status: show

Object: **Related Component Subsystem**
Type: Character
Description: This is the sub system of the component.
Select equivalent: PRODUCT_RELATED_COMPONENT.SUBSYSTEM

Where equivalent:

Qualification: dimension
List of values: 04i, editable, manual refresh, not exportable
Security access level: 0
Can be used: in result, in condition, in sort
Object status: show

Object: **Related Component Product Short Name**
Type: Character
Description: This is the short name of the component.
Select equivalent: PRODUCT_RELATED_COMPONENT.SHORT_NAME

Where equivalent:

Qualification: dimension
List of values: no
Security access level: 0
Can be used: in result, in condition, in sort
Object status: show

Object: **Related Component Product Long Name**

Type: Character
Description: This is the long name of the component.
Select equivalent: PRODUCT_RELATED_COMPONENT.LONG_NAME

Where equivalent:

Qualification: dimension
List of values: no
Security access level: 0
Can be used: in result, in condition, in sort
Object status: show

Object: **Waive Shipping?**
Type: Character
Description: This flag indicates if shipping is to be waived for the component.
Select equivalent: PRODUCT_COMPONENT.WAIVE_SHIPPING_FLAG

Where equivalent:

Qualification: dimension
List of values: no
Security access level: 0
Can be used: in result, in condition, in sort
Object status: show

Object: **Is this Component Active?**
Type: Character
Description: This flag indicates if the component is active.
Select equivalent: PRODUCT_COMPONENT.ACTIVE_FLAG

Where equivalent:

Qualification: dimension
List of values: no
Security access level: 0
Can be used: in result, in condition, in sort
Object status: show

Object: **Is this Component Product a Master Product?**
Type: Character
Description: This flag indicates if the package product is a master product.
Select equivalent: PRODUCT_PCKG_COMPONENT.MASTER_PRODUCT_FLAG

Where equivalent:

Qualification: dimension
 List of values: no
 Security access level: 0
 Can be used: in result, in condition, in sort
 Object status: show

Object: **Is this Related Component Product a Master Product?**
 Type: Character
 Description: This flag indicates if the component is a master product.
 Select equivalent: PRODUCT_RELATED_COMPONENT.MASTER_PRODUCT_FLAG

Where equivalent:

Qualification: dimension
 List of values: no
 Security access level: 0
 Can be used: in result, in condition, in sort
 Object status: show

Class: Related Customer Setup
Description: This class contains information about product related customer.

Object: **Related Master Customer ID**
 Type: Character
 Description: This is the master customer id of the customer related to the product.
 Select equivalent: PRODUCT_RELATED_CUSTOMER.MASTER_CUSTOMER_ID

Where equivalent:

Qualification: dimension
 List of values: no
 Security access level: 0
 Can be used: in result, in condition, in sort
 Object status: show

Object: **Related Sub Customer ID**
 Type: Number
 Description: This is the sub customer id of the customer related to the product.
 Select equivalent: PRODUCT_RELATED_CUSTOMER.SUB_CUSTOMER_ID

Where equivalent:

Qualification: dimension
 List of values: no
 Security access level: 0
 Can be used: in result, in condition, in sort
 Object status: show

Object: **Related Customer ID**

Type: Character

Description: This is the concatenation of the master customer id and sub customer id, of the customer related to the product, if the sub customer id is not 0 else it is the master customer id.

Select equivalent:

```
CASE WHEN PRODUCT_RELATED_CUSTOMER.SUB_CUSTOMER_ID = 0 THEN PRODUCT_RELATED_CUSTOMER.MASTER_CUSTOMER_ID ELSE PRODUCT_RELATED_CUSTOMER.MASTER_CUSTOMER_ID + '-' + CONVERT(VARCHAR, PRODUCT_RELATED_CUSTOMER.SUB_CUSTOMER_ID) END
```

Where equivalent:

Qualification: dimension
 List of values: no
 Security access level: 0
 Can be used: in result, in condition, in sort
 Object status: show

Object: **Related Customer Full Name**

Type: Character

Description: This is the label name of the customer related to the product.

Select equivalent:

```
CUSTOMER_PRODUCT_RELATED.LABEL_NAME
```

Where equivalent:

Qualification: dimension
 List of values: no
 Security access level: 0

Can be used: in result, in condition, in sort
Object status: show

Object: **Related Customer Last First Name**
Type: Character
Description: This is the last first name of the customer related to the product.
Select equivalent: CUSTOMER_PRODUCT_RELATED.LAST_FIRST_NAME

Where equivalent:

Qualification: dimension
List of values: no
Security access level: 0
Can be used: in result, in condition, in sort
Object status: show

Object: **Related Customer First Name**
Type: Character
Description: This is the first name of the customer related to the product.
Select equivalent: CUSTOMER_PRODUCT_RELATED.FIRST_NAME

Where equivalent:

Qualification: dimension
List of values: no
Security access level: 0
Can be used: in result, in condition, in sort
Object status: show

Object: **Related Customer Last Name**
Type: Character
Description: This is the last name of the customer related to the product.
Select equivalent: CUSTOMER_PRODUCT_RELATED.LAST_NAME

Where equivalent:

Qualification: dimension
List of values: no
Security access level: 0
Can be used: in result, in condition, in sort
Object status: show

Object: **Related Customer Search Name**
Type: Character
Description: This is the search name of the customer related to the product.
Select equivalent: CUSTOMER_PRODUCT_RELATED.SEARCH_NAME

Where equivalent:

Qualification: dimension
List of values: no
Security access level: 0
Can be used: in result, in condition, in sort
Object status: show

Object: **Relation Code**
Type: Character
Description: Classifies the relationship, for example Speaker, Author, Publisher, Vendor, Product Manager, etc.
Select equivalent: PRODUCT_RELATED_CUSTOMER.CUSRELATION_CODE

Where equivalent:

Qualification: dimension
List of values: 04x, editable, manual refresh, not exportable
Security access level: 0
Can be used: in result, in condition, in sort
Object status: show

Object: **Relation Description**
Type: Character
Description: This is the description of the product and customer relationship.
Select equivalent: APP_CODE_CUSRELATION_CODE.DESCR
Where equivalent:

Qualification: dimension
List of values: no
Security access level: 0
Can be used: in result, in condition, in sort
Object status: show

Object: **Relation Status Code**
Type: Character

Description: This is the user-defined status of the individual for this product.
 Select equivalent: PRODUCT_RELATED_CUSTOMER.RELATION_STATUS_CODE

Where equivalent:

Qualification: dimension
 List of values: 050, editable, manual refresh, not exportable
 Security access level: 0
 Can be used: in result, in condition, in sort
 Object status: show

Object: **Relation Status Description**
 Type: Character
 Description: This is the description of the product-customer relationship status.
 Select equivalent: APP_CODE_RELATION_STATUS_CODE.DESCR

Where equivalent:

Qualification: dimension
 List of values: no
 Security access level: 0
 Can be used: in result, in condition, in sort
 Object status: show

Object: **Grade Code**
 Type: Character
 Description: This is the grade associated with the related customer. This could be for a speaker at a session.
 Select equivalent: PRODUCT_RELATED_CUSTOMER.GRADE_CODE

Where equivalent:

Qualification: dimension
 List of values: 052, editable, manual refresh, not exportable
 Security access level: 0
 Can be used: in result, in condition, in sort
 Object status: show

Object: **Grade Description**
 Type: Character
 Description: This is the description of the grade.

Select equivalent: APP_CODE_GRADE_CODE.DESCR

Where equivalent:

Qualification: dimension
List of values: no
Security access level: 0
Can be used: in result, in condition, in sort
Object status: show

Object: **Evaluation**
Type: Character
Description: This is the evaluation granted to a customer related to a product e.g. speaker to a meeting.
Select equivalent: PRODUCT_RELATED_CUSTOMER.EVALUATION

Where equivalent:

Qualification: dimension
List of values: no
Security access level: 0
Can be used: in result, in condition, in sort
Object status: show

Object: **Start Time Offset**
Type: Number
Description: This is the time offset from the start time that the speaker needs to setup their part.
Select equivalent: PRODUCT_RELATED_CUSTOMER.START_TIME_OFFSET

Where equivalent:

Qualification: measure
Aggregate function: None
List of values: no
Security access level: 0
Can be used: in result, in condition, in sort
Object status: show

Object: **Duration**
Type: Number
Description: This is the duration of the speech/talk.

Select equivalent: PRODUCT_RELATED_CUSTOMER.DURATION

Where equivalent:

Qualification: measure
 Aggregate function: None
 List of values: no
 Security access level: 0
 Can be used: in result, in condition, in sort
 Object status: show

Object: **Abstract ID**
 Type: Number
 Description: This is the uniquely generated number assigned to the abstract that will be used by the speaker for this product.

Select equivalent: PRODUCT_RELATED_CUSTOMER.ABSTRACT_ID

Where equivalent:

Qualification: dimension
 List of values: no
 Security access level: 0
 Can be used: in result, in condition, in sort
 Object status: show

Object: **Abstract Version Code**
 Type: Character
 Description: This is the abstract version code of the abstract that will be used by the speaker for this product.

Select equivalent: PRODUCT_RELATED_CUSTOMER.ABSTRACT_VERSION_CODE

Where equivalent:

Qualification: dimension
 List of values: 058, editable, manual refresh, not exportable
 Security access level: 0
 Can be used: in result, in condition, in sort
 Object status: show

Object: **Abstract Version Description**
 Type: Character
 Description: This is the abstract version description that will be used by the speaker for this product.
 Select equivalent: APP_CODE_ABSTRACT_VERSION_CODE.DESCR
 Where equivalent:

Qualification: dimension
 List of values: no
 Security access level: 0
 Can be used: in result, in condition, in sort
 Object status: show

Class: Related Files Setup
Description: This class includes information about files related to the product.

Object: **Product Related File Code**
 Type: Character
 Description: This describes the type of file, e.g. whether the file is a Word document, PowerPoint file, Text file, etc.
 Select equivalent: PRODUCT_FILE.FILE_TYPE_CODE
 Where equivalent:

Qualification: dimension
 List of values: 05a, editable, manual refresh, not exportable
 Security access level: 0
 Can be used: in result, in condition, in sort
 Object status: show

Object: **Product Related File Description**
 Type: Character
 Description: This is the description of the product related file.
 Select equivalent: APP_CODE_FILE_TYPE_CODE.DESCR
 Where equivalent:

Qualification: dimension

List of values: no
Security access level: 0
Can be used: in result, in condition, in sort
Object status: show

Object: **Product Related File Specification**
Type: Character
Description: This is the path specification for the product related file.
Select equivalent: PRODUCT_FILE.FILE_SPEC

Where equivalent:

Qualification: dimension
List of values: no
Security access level: 0
Can be used: in result, in condition, in sort
Object status: show

Object: **File Description**
Type: Character
Description: This is the description of the file.
Select equivalent: PRODUCT_FILE.DESCRPTION

Where equivalent:

Qualification: dimension
List of values: no
Security access level: 0
Can be used: in result, in condition, in sort
Object status: show

Object: **Is Relation Active?**
Type: Character
Description: This flag indicates if the relation between the file and product is active.
Select equivalent: PRODUCT_FILE.ACTIVE_FLAG

Where equivalent:

Qualification: dimension
List of values: no
Security access level: 0
Can be used: in result, in condition, in sort
Object status: show

Class:	Categories and Keyword Setup
Description:	This class includes information about categories and keywords related to a product.

Object: **Category Code**
Type: Character
Description: This is the category used for searching from the Web.
Select equivalent: PRODUCT_CATEGORY.CATEGORY

Where equivalent:

Qualification: dimension
List of values: 05f, editable, manual refresh, not exportable
Security access level: 0
Can be used: in result, in condition, in sort
Object status: show

Object: **Category Description**
Type: Character
Description: This is the description of the category.
Select equivalent: APP_CODE_CATEGORY_CODE.DESCR

Where equivalent:

Qualification: dimension
List of values: 05g, editable, manual refresh, not exportable
Security access level: 0
Can be used: in result, in condition, in sort
Object status: show

Object: **Keyword**
Type: Character
Description: User-defined keyword used for searching from the Web
Select equivalent: PRODUCT_KEYWORD.KEYWORD

Where equivalent:

Qualification: dimension
List of values: 05j, editable, manual refresh, not exportable
Security access level: 0
Can be used: in result, in condition, in sort
Object status: show

Class: **Product Segmentation**
 Description: This class includes information about segmentation.

Object: **Segment Rule Code**

Type: Character

Description: This indicates that anyone who purchases this product will become a member of the segment. This is only available over the Web. Members of segments can view others who purchased the product.

Select equivalent: PRODUCT.SEGMENT_RULE_CODE

Where equivalent:

Qualification: dimension

List of values: 05k, editable, manual refresh, not exportable

Security access level: 0

Can be used: in result, in condition, in sort

Object status: show

Object: **Segment Rule Description**

Type: Character

Description: The description of the segment rule.

Select equivalent: APP_CODE_SEGMENT_RULE_CODE.DESCR

Where equivalent:

Qualification: dimension

List of values: no

Security access level: 0

Can be used: in result, in condition, in sort

Object status: show

Object: **Segment Description**

Type: Character

Description: The description of the segment product.

Select equivalent: PRODUCT.SEGMENT_DESCR

Where equivalent:

Qualification: dimension

List of values: no
Security access level: 0
Can be used: in result, in condition, in sort
Object status: show

Object: **Segment Qualifier 1**
Type: Character
Description: This represents the parent product code for the segment product.
Select equivalent: PRODUCT.SEGMENT_QUALIFIER1

Where equivalent:

Qualification: dimension
List of values: no
Security access level: 0
Can be used: in result, in condition, in sort
Object status: show

Object: **Segment Qualifier 2**
Type: Character
Description: This represents the product code for the segment product.
Select equivalent: PRODUCT.SEGMENT_QUALIFIER2

Where equivalent:

Qualification: dimension
List of values: no
Security access level: 0
Can be used: in result, in condition, in sort
Object status: show

Object: **Use Segment Control?**
Type: Character
Description: This flag indicates if segment control is to be used.
Select equivalent: PRODUCT.SEGMENT_CONTROL_FLAG

Where equivalent:

Qualification: dimension
List of values: no
Security access level: 0
Can be used: in result, in condition, in sort
Object status: show

Class: **Product Filters**
Description:

No objects

Class: **Rate Filters**
Description:

No objects

Class: **Current Filters**
Description:

No objects

Condition List

No Conditions

Conditions

Class: **Product Filters**
Description:

Products Available for Sale

Description:Filter shows only those products that are available for sale.

Where Equivalent:PRODUCT.PRODUCT_STAT
US_CODE = 'A' AND PRODUCT.AVAILABLE_T
O_ORDERS_FLAG = 'Y' AND PRODUCT.AVAIL
ABLE_DATE <= GETDATE() AND (PRODUCT.E
XPIRATION_DATE >= GETDATE() OR PRODU
CT.EXPIRATION_DATE is Null) AND PRODU
CT.VALID_FLAG = 'Y'

Is Product Valid?

Description:Shows valid products

Where Equivalent:PRODUCT.VALID_FLAG = 'Y'

All Master Products

Description:Shows all master products.

Where Equivalent:PRODUCT.MASTER_PRODUCT_FLAG = 'Y'

Members Only Products

Description:Shows members only products.

Where Equivalent:PRODUCT.MEMBERS_ONLY_FLAG = 'Y'

Package Products

Description:Shows Package products only.

Where Equivalent:PRODUCT.SUBSYSTEM = 'PCK'

Class:

Rate Filters

Description:

Active Rate Codes

Description:Shows rate codes that are active

Where Equivalent:PRODUCT_RATE_CODE.ACTIVE_FLAG = 'Y'

Default Rate Codes

Description:Shows default rate codes only.

Where Equivalent:PRODUCT_RATE_CODE.DEFAULT_RATE_FLAG = 'Y'

Rate Available on Web?

Description:Shows only those rates that are available on web.

Where Equivalent:PRODUCT_RATE_CODE.ECOMMERCE_FLAG = 'Y'

Default Web Rates

Description:Shows only those rates that are default on the web.

Where Equivalent:PRODUCT_RATE_CODE.DEFAULT_RATE_WEB_FLAG = 'Y'

Class:

Current Filters

Description:

Current Product Rates

Description:Shows only those product rates that are current.

Where Equivalent:PRODUCT_PRICING.PRICE_BEGIN_DATE <= getdate() AND PRODUCT_PRICING.PRICE_END_DATE > getdate() OR PRODUCT_PRICING.PRICE_END_DATE IS NULL

Current Shipping Charges

Description:Shows only those shipping charges that are current.

Where Equivalent:PRODUCT_SHIPPING.EFFECTIVE_BEGIN_DATE <=getdate() AND PRODUCT_SHIPPING.EFFECTIVE_END_DATE >getdate() OR PRODUCT_SHIPPING.EFFECTIVE_END_DATE IS NULL

Current Cancellation Fees

Description:Shows only those cancellation fees that are current.

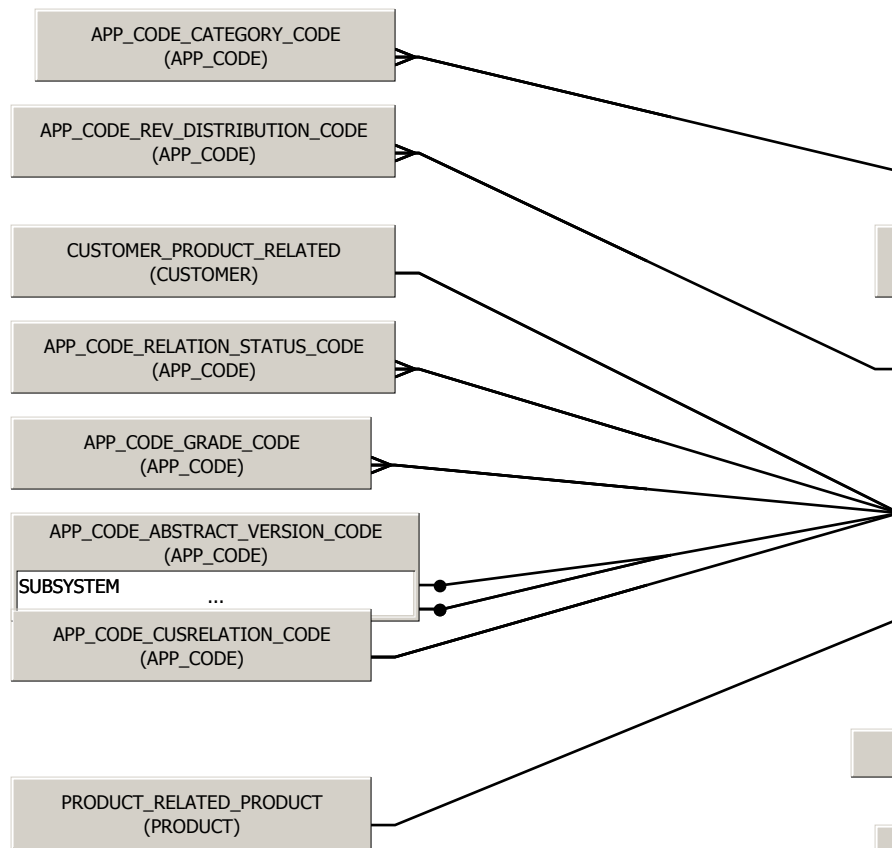
Where Equivalent:PRODUCT_CANCEL_FEE.EFFECTIVE_BEGIN_DATE <= getdate() AND PRODUCT_CANCEL_FEE.EFFECTIVE_END_DATE > getdate() OR PRODUCT_CANCEL_FEE.EFFECTIVE_END_DATE IS NULL

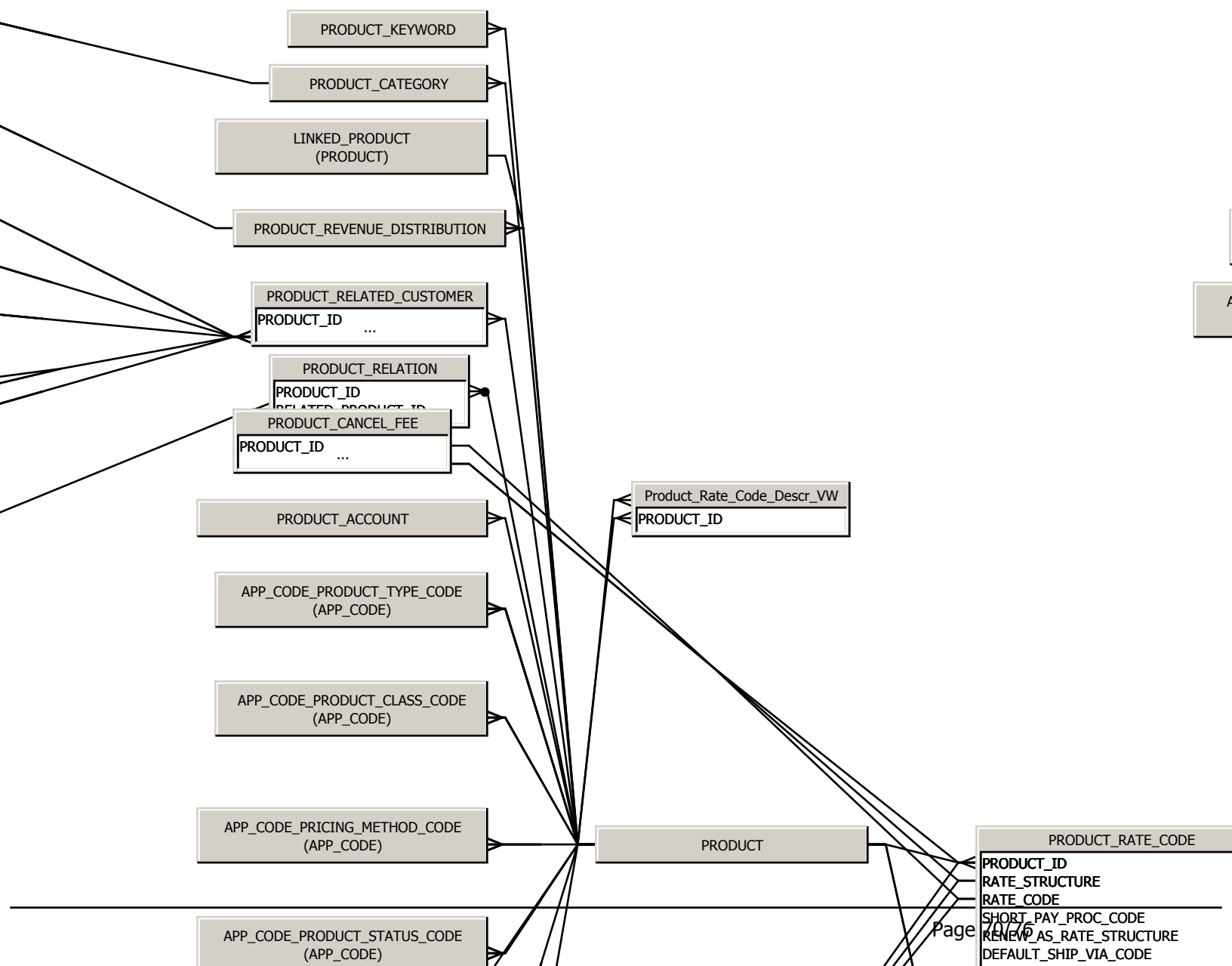
Hierarchies List

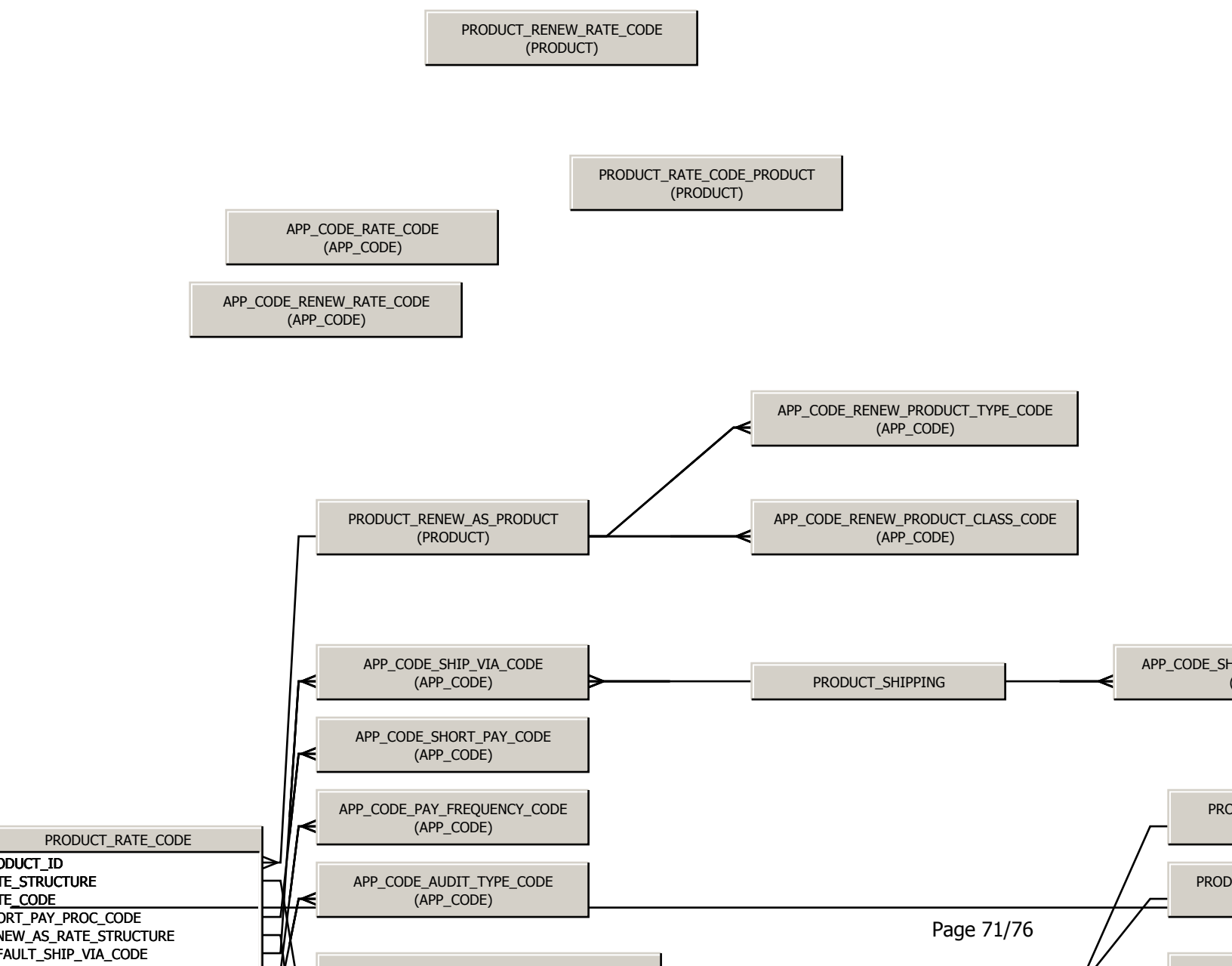
No Hierarchies

Hierarchies

No Hierarchies







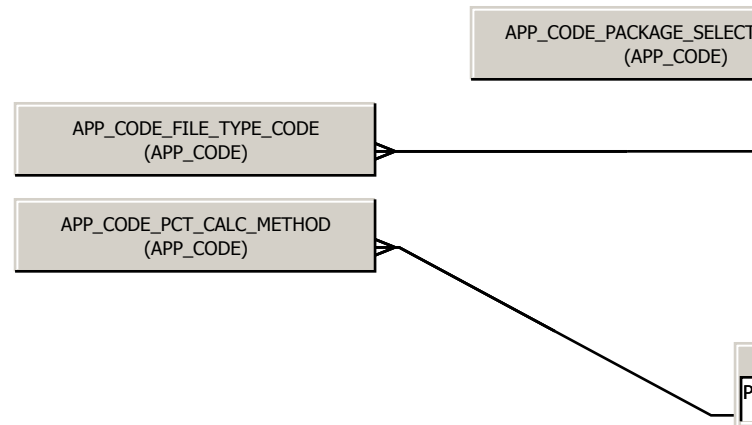
E_CODE

S_CODE

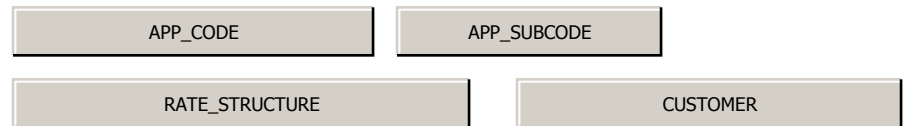
APP_CODE_SHIP_CALC_METHOD_CODE
(APP_CODE)

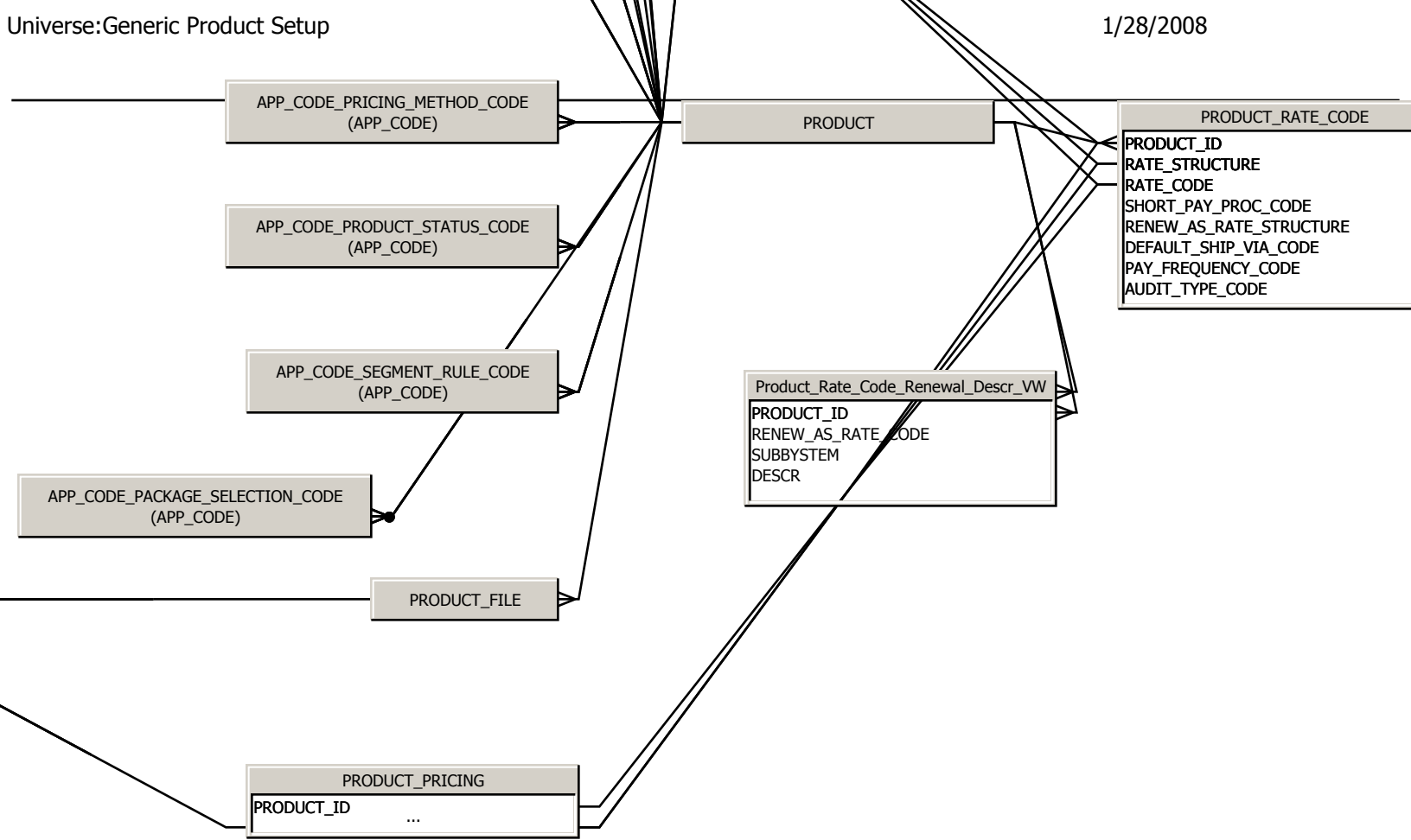
PRODUCT_PCKG_COMPONENT
(PRODUCT)

PRODUCT_RELATED_COMPONENT
(PRODUCT)



Alias Tables Please DONOT REMOVE!!!





ER

