

Universe Parameters

Definition

Name: Abstract Submissions & Reviews

Description:

Connection: PersonifyQA

General information

Created: 1/16/2009 by Administrator

Modified: 4/20/2009 by Administrator

Comments:

Statistics:

- 31 Classes
- 278 Objects
- 26 Tables
- 14 Aliases
- 38 Joins
- 0 Contexts
- 0 Hierarchies
- 17 Conditions

Strategies

Join strategy: Edit Manually (none)

Table strategy: (Built-in) Standard

Object strategy: (Built-in) Standard Renaming

Controls

Limit size of result set to: 5000 rows

Limit size of long text objects to: 1000 characters

Limit execution time to: 10 minutes

Warn if cost estimate exceeds: unchecked

SQL parameters

Query

Allow use of subqueries: yes

Allow use of union, intersect and minus operators: yes

Allow complex conditions in Query Panel: yes

Cartesian products: warn

Multiple paths

Generate several SQL statements for each context: yes

Generate several SQL statements for each measure: yes

Allow selection of multiple contexts: no

Links

No links for this universe

Object List

No classes

Condition List

No Conditions

Hierarchies List

No Hierarchies

Tables List

ABS_CALL
ABS_SUBMISSION
ABS_SUBMISSION_AUTHOR
ABS_SUBMISSION_AUTHOR_DISCLOSURE
ABS_SUBMISSION_DISCLOSURE
ABS_SUBMISSION_FILE
ABS_SUBMISSION_KEYWORD
ABS_SUBMISSION_PRODUCT_LINK
ABS_SUBMISSION_REQUIREMENT
ABS_SUBMISSION_REVIEWER
ABS_SUBMISSION_REVIEWER_EVALUATION
ABS_SUBMISSION_REVIEWER_EVALUATION_REVIEWER
ABS_SUBMISSION_SCORING
ABS_SUBMISSION_TEXT_BLOCK
ABS_SUBMISSION_TOPIC
APP_CODE
APP_CODE_EMPLOYER_CUS_CLASS
APP_CODE_EMPLOYER_CUS_STATUS
APP_CODE_REVIEWER_CUS_CLASS
APP_CODE_REVIEWER_CUS_STATUS
APP_SUBCODE
CUSTOMER
CUSTOMER_AUTHOR
CUS_ACTIVITY
CUS_ACTIVITY_CUSTOMER
CUS_CURRENT_MEMBERSHIP_INFO
CUS_FACILITY_PRIMARY_INFO_VW
Cus_Relationship_Related_Cus_Info_VW
Cus_Relationship_Related_Cus_Info_VW_Reviewer
EVENT_MEETING_INFO

MTG_PRODUCT
 MTG_ROOM_ASSIGNMENT_VW
 NOTIFY_ABS_SUBMISSION_CHRONICLE
 PRIMARY_MTG_CUS_FACILITY_PRIMARY_INFO_VW
 PRODUCT
 PRODUCT_CLASS_EVENT_INFO_APP_CODE
 PRODUCT_EVENT_INFO
 PRODUCT_TEXT
 PRODUCT_TYPE_EVENT_INFO_APP_CODE
 SESSION_WEB_TEXT

Join List

- Join0: ABS_CALL.ORG_ID=ABS_SUBMISSION.ORG_ID and ABS_CALL.ORG_UNIT_ID=ABS_SUBMISSION.ORG_UNIT_ID and ABS_CALL.ABS_CALL_CODE=ABS_SUBMISSION.ABS_CALL_CODE
- Join1: ABS_SUBMISSION.ABS_SUBMISSION_ID=ABS_SUBMISSION_REQUIREMENT.ABS_SUBMISSION_ID
- Join2: ABS_SUBMISSION.ABS_SUBMISSION_ID=ABS_SUBMISSION_AUTHOR.ABS_SUBMISSION_ID
- Join3: ABS_SUBMISSION_AUTHOR.MASTER_CUSTOMER_ID=CUSTOMER_AUTHOR.MASTER_CUSTOMER_ID and ABS_SUBMISSION_AUTHOR.SUB_CUSTOMER_ID=CUSTOMER_AUTHOR.SUB_CUSTOMER_ID
- Join4: CUS_CURRENT_MEMBERSHIP_INFO.MASTER_CUSTOMER_ID=ABS_SUBMISSION_AUTHOR.MASTER_CUSTOMER_ID and CUS_CURRENT_MEMBERSHIP_INFO.SUB_CUSTOMER_ID=ABS_SUBMISSION_AUTHOR.SUB_CUSTOMER_ID
- Join5: Cus_Relationship_Related_Cus_Info_VW.MASTER_CUSTOMER_ID=ABS_SUBMISSION_AUTHOR.MASTER_CUSTOMER_ID and Cus_Relationship_Related_Cus_Info_VW.SUB_CUSTOMER_ID=ABS_SUBMISSION_AUTHOR.SUB_CUSTOMER_ID and Cus_Relationship_Related_Cus_Info_VW.RELATIONSHIP_TYPE='EMPLOYMENT' and Cus_Relationship_Related_Cus_Info_VW.RECIPROCAL_CODE='EMPLOYEE'

and Cus_Relationship_Related_Cus_Info_VW.PRIMARY_EMPLOYER_FLAG='Y'

Join6: APP_CODE_EMPLOYER_CUS_CLASS.SUBSYSTEM = 'CUS' and APP_CODE_EMPLOYER_CUS_CLASS.TYPE= 'CUSTOMER_CLASSES' and Cus_Relationship_Related_Cus_Info_VW.RELATED_CUS_CUSTOMER_CLASS_CODE=APP_CODE_EMPLOYER_CUS_CLASS.CODE

Join7: APP_CODE_EMPLOYER_CUS_STATUS.SUBSYSTEM = 'CUS' and APP_CODE_EMPLOYER_CUS_STATUS.TYPE = 'CUSTOMER_STATUS' and Cus_Relationship_Related_Cus_Info_VW.RELATED_CUS_CUSTOMER_STATUS_CODE=APP_CODE_EMPLOYER_CUS_STATUS.CODE

Join8: ABS_SUBMISSION_TOPIC.ABS_SUBMISSION_ID=ABS_SUBMISSION.ABS_SUBMISSION_ID

Join9: ABS_SUBMISSION.ABS_SUBMISSION_ID=ABS_SUBMISSION_KEYWORD.ABS_SUBMISSION_ID

Join10: ABS_SUBMISSION_TEXT_BLOCK.ABS_SUBMISSION_ID=ABS_SUBMISSION.ABS_SUBMISSION_ID

Join11: ABS_SUBMISSION.ABS_SUBMISSION_ID=ABS_SUBMISSION_FILE.ABS_SUBMISSION_ID

Join12: ABS_SUBMISSION_AUTHOR_DISCLOSURE.ABS_SUBMISSION_AUTHOR_ID=ABS_SUBMISSION_AUTHOR.ABS_SUBMISSION_AUTHOR_ID

Join13: ABS_SUBMISSION.ABS_SUBMISSION_ID=ABS_SUBMISSION_DISCLOSURE.ABS_SUBMISSION_ID

Join14: ABS_SUBMISSION.ABS_SUBMISSION_ID=ABS_SUBMISSION_REVIEWER.ABS_SUBMISSION_ID

Join15: ABS_SUBMISSION_REVIEWER.MASTER_CUSTOMER_ID=CUSTOMER.MASTER_CUSTOMER_ID and ABS_SUBMISSION_REVIEWER.SUB_CUSTOMER_ID=CUSTOMER.SUB_CUSTOMER_ID

Join16: ABS_SUBMISSION.ABS_SUBMISSION_ID=ABS_SUBMISSION_REVIEWER_EVALUATION.ABS_SUBMISSION_ID

Join17: ABS_SUBMISSION_REVIEWER.ABS_SUBMISSION_REVIEWER_ID=ABS_SUBMISSION

N_REVIEWER_EVALUATION_REVIEWER.A
BS_SUBMISSION_REVIEWER_ID

Join18: ABS_SUBMISSION.ABS_SUBMISSION_ID=ABS_SUBMISSION_SCORING.ABS_SUBMISSION_ID

Join19: ABS_SUBMISSION_REVIEWER.MASTER_CUSTOMER_ID=Cus_Relationship_Related_Cus_Info_VW_Reviewer.MASTER_CUSTOMER_ID and ABS_SUBMISSION_REVIEWER.SUB_CUSTOMER_ID=Cus_Relationship_Related_Cus_Info_VW_Reviewer.SUB_CUSTOMER_ID and Cus_Relationship_Related_Cus_Info_VW_Reviewer.RELATIONSHIP_TYPE = 'EMPLOYMENT' and Cus_Relationship_Related_Cus_Info_VW_Reviewer.RECIPROCAL_CODE = 'EMPLOYEE' and Cus_Relationship_Related_Cus_Info_VW_Reviewer.PRIMARY_EMPLOYER_FLAG = 'Y'

Join20: APP_CODE_REVIEWER_CUS_CLASS.SUBSYSTEM = 'CUS' and APP_CODE_REVIEWER_CUS_CLASS.TYPE = 'CUSTOMER_CLASS' and Cus_Relationship_Related_Cus_Info_VW_Reviewer.RELATED_CUSTOMER_CLASS_CODE=APP_CODE_REVIEWER_CUS_CLASS.CODE

Join21: APP_CODE_REVIEWER_CUS_STATUS.SUBSYSTEM = 'CUS' and APP_CODE_REVIEWER_CUS_STATUS.TYPE = 'CUSTOMER_STATUS' and Cus_Relationship_Related_Cus_Info_VW_Reviewer.RELATED_CUSTOMER_STATUS_CODE=APP_CODE_REVIEWER_CUS_STATUS.CODE

Join22: NOTIFY_ABS_SUBMISSION_CHRONICLE.ABS_SUBMISSION_ID=ABS_SUBMISSION.ABS_SUBMISSION_ID

Join23: CUS_ACTIVITY.ABS_SUBMISSION_ID=ABS_SUBMISSION.ABS_SUBMISSION_ID

Join24: CUSTOMER.MASTER_CUSTOMER_ID=CUS_ACTIVITY_CUSTOMER.MASTER_CUSTOMER_ID and CUSTOMER.SUB_CUSTOMER_ID=CUS_ACTIVITY_CUSTOMER.SUB_CUSTOMER_ID

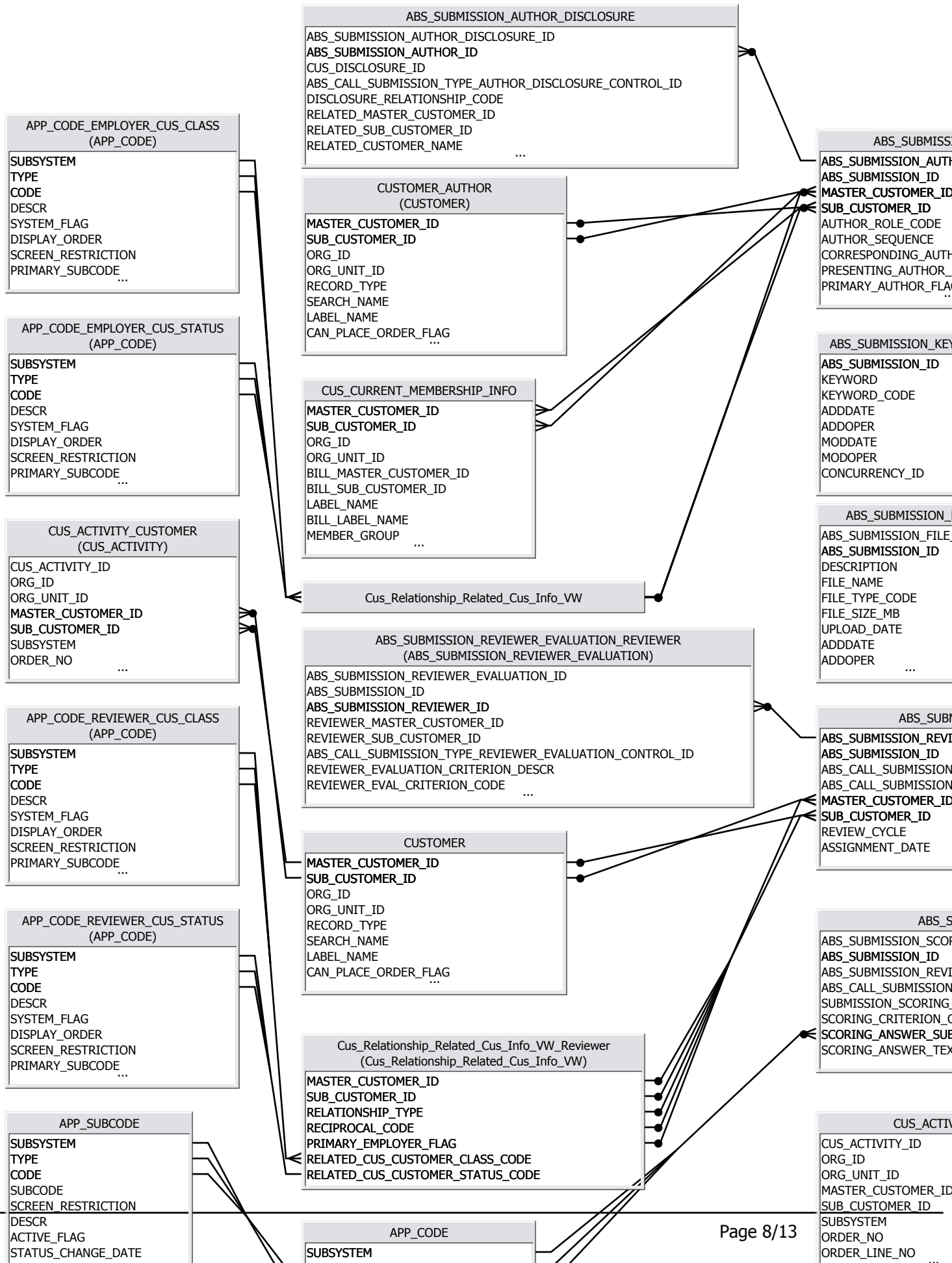
-
- Join25: APP_CODE.SUBSYSTEM = 'ABS' and APP_CODE.TYPE = 'SCORING_ANSWER' and ABS_SUBMISSION_SCORING.SCORING_ANSWER_SUBCODE=APP_CODE.CODE
- Join26: APP_CODE.TYPE=APP_SUBCODE.TYPE and APP_CODE.CODE=APP_SUBCODE.CODE and APP_SUBCODE.SUBSYSTEM='ABS'
- Join27: ABS_SUBMISSION.ABS_SUBMISSION_ID=ABS_SUBMISSION_PRODUCT_LINK.ABS_SUBMISSION_ID
- Join28: ABS_SUBMISSION_PRODUCT_LINK.PRODUCT_ID=MTG_PRODUCT.PRODUCT_ID
- Join29: PRODUCT_EVENT_INFO.PRODUCT_ID=MTG_PRODUCT.PRODUCT_ID AND PRODUCT_EVENT_INFO.SUBSYSTEM='MTG' AND PRODUCT_EVENT_INFO.PRODUCT_TYPE_CODE='S'
- Join30: EVENT_MEETING_INFO.PRODUCT_CODE = PRODUCT_EVENT_INFO.PARENT_PRODUCT and PRODUCT_EVENT_INFO.PRODUCT_TYPE_CODE = 'S'
- Join31: PRODUCT_EVENT_INFO.PRODUCT_TYPE_CODE=PRODUCT_TYPE_EVENT_INFO_APP_CODE.CODE
- Join32: PRODUCT_TYPE_EVENT_INFO_APP_CODE.SUBSYSTEM= 'MTG' AND PRODUCT_TYPE_EVENT_INFO_APP_CODE.TYPE = 'PRODUCT_TYPE'
- Join33: PRODUCT_EVENT_INFO.PRODUCT_CLASS_CODE=PRODUCT_CLASS_EVENT_INFO_APP_CODE.CODE
- Join34: PRODUCT_CLASS_EVENT_INFO_APP_CODE.SUBSYSTEM= 'MTG' AND PRODUCT_CLASS_EVENT_INFO_APP_CODE.TYPE = 'PRODUCT_CLASS'
- Join35: PRODUCT_EVENT_INFO.PRODUCT_ID=SESSION_WEB_TEXT.PRODUCT_ID
- Join36: MTG_PRODUCT.PRODUCT_ID=MTG_ROOM_ASSIGNMENT_VW.PRODUCT_ID and MTG_PRODUCT.FACILITY_MAST_CUST=MTG_ROOM_ASSIGNMENT_VW.FACILITY_MAST_CUST and MTG_PRODUCT.FACILITY_SUB_CUST=MTG_ROOM_ASSIGNMENT_VW.F
-

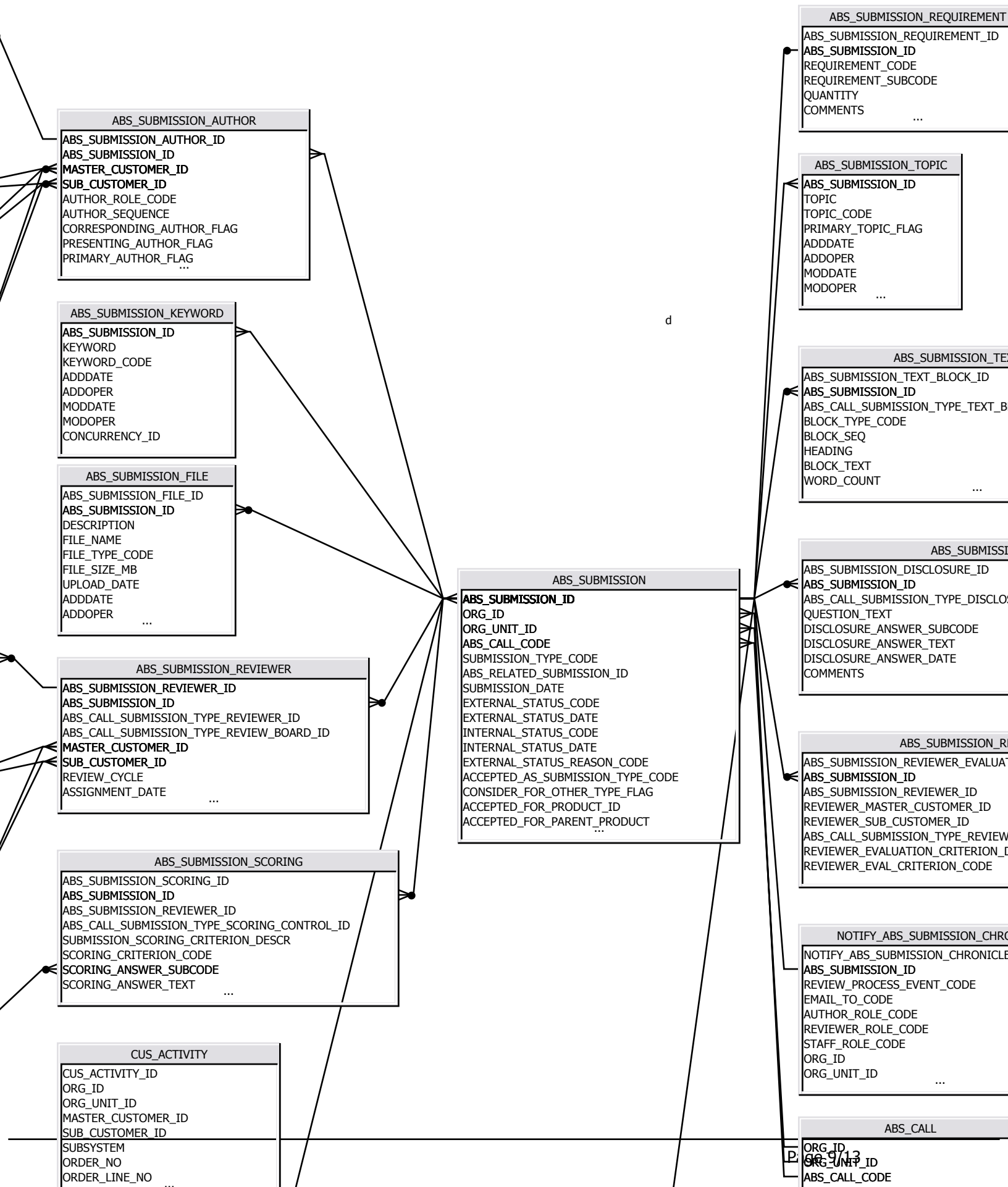
ACILITY_SUB_CUST

Join37: MTG_PRODUCT.FACILITY_MAST_CUST=PRIMARY_MTG_CUS_FACILITY_PRIMARY_INFO_VW.FACILITY_MAST_CUST and MTG_PRODUCT.FACILITY_SUB_CUST=PRIMARY_MTG_CUS_FACILITY_PRIMARY_INFO_VW.FACILITY_SUB_CUST

Context List

No context





ABS_SUBMISSION_REQUIREMENT
ABS_SUBMISSION_REQUIREMENT_ID
ABS_SUBMISSION_ID
REQUIREMENT_CODE
REQUIREMENT_SUBCODE
QUANTITY
COMMENTS
...

ABS_SUBMISSION_TOPIC
ABS_SUBMISSION_ID
TOPIC
TOPIC_CODE
PRIMARY_TOPIC_FLAG
MODIFIED_DATE
MODIFIED_DATE
MODIFIED_DATE
MODIFIED_DATE
...

ABS_SUBMISSION_TEXT_BLOCK
ABS_SUBMISSION_TEXT_BLOCK_ID
ABS_SUBMISSION_ID
CALL_SUBMISSION_TYPE_TEXT_BLOCK_CONTROL_ID
TEXT_BLOCK_TYPE_CODE
TEXT_BLOCK_SEQ
TEXT_BLOCK_DESC
TEXT_BLOCK_TEXT
WORD_COUNT
...

ABS_SUBMISSION_DISCLOSURE
ABS_SUBMISSION_DISCLOSURE_ID
ABS_SUBMISSION_ID
CALL_SUBMISSION_TYPE_DISCLOSURE_QUESTION_CONTROL_ID
QUESTION_TEXT
DISCLOSURE_ANSWER_SUBCODE
DISCLOSURE_ANSWER_TEXT
DISCLOSURE_ANSWER_DATE
COMMENTS
...

ABS_SUBMISSION_REVIEWER_EVALUATION
ABS_SUBMISSION_REVIEWER_EVALUATION_ID
ABS_SUBMISSION_ID
ABS_SUBMISSION_REVIEWER_ID
REVIEWER_MASTER_CUSTOMER_ID
REVIEWER_SUB_CUSTOMER_ID
CALL_SUBMISSION_TYPE_REVIEWER_EVALUATION_CONTROL_ID
REVIEWER_EVALUATION_CRITERION_DESCR
REVIEWER_EVAL_CRITERION_CODE
...

NOTIFY_ABS_SUBMISSION_CHRONICLE
NOTIFY_ABS_SUBMISSION_CHRONICLE_ID
ABS_SUBMISSION_ID
VIEW_PROCESS_EVENT_CODE
MAIL_TO_CODE
AUTHOR_ROLE_CODE
REVIEWER_ROLE_CODE
AFFILIATION_ROLE_CODE
ORGANIZATION_ID
ORGANIZATION_UNIT_ID
...

ABS_CALL
CALL_ID
ORGANIZATION_UNIT_ID
CALL_CODE

APP_SUBCODE
SUBSYSTEM
TYPE
CODE
SUBCODE
SCREEN_RESTRICTION
DESCR
ACTIVE_FLAG
STATUS_CHANGE_DATE
OPTION_1
...

MASTER_CUSTOMER_ID
SUB_CUSTOMER_ID
RELATIONSHIP_TYPE
RECIPROCAL_CODE
PRIMARY_EMPLOYER_FLAG
RELATED_CUS_CUSTOMER_CLASS_CODE
RELATED_CUS_CUSTOMER_STATUS_CODE

APP_CODE
SUBSYSTEM
TYPE
CODE
DESCR
SYSTEM_FLAG
DISPLAY_ORDER
SCREEN_RESTRICTION
PRIMARY_SUBCODE
ACTIVE_FLAG
...

CUS_ACTIV
CUS_ACTIVITY_ID
ORG_ID
ORG_UNIT_ID
MASTER_CUSTOMER_ID
SUB_CUSTOMER_ID
SUBSYSTEM
ORDER_NO
ORDER_LINE_NO
...

Alias Tables DONOT DELETE!!!!

PRODUCT
PRODUCT_ID
ORG_ID
ORG_UNIT_ID
PARENT_PRODUCT
PRODUCT_CODE
SUBSYSTEM
SHORT_NAME
LONG_NAME
MASTER_PRODUCT_FLAG
...

PRODUCT_TEXT
PRODUCT_TEXT_ID
LANGUAGE
PRODUCT_ID
TEXT_TYPE_CODE
TEXT
ADDOPER
ADDDATE
MODOPER
MODDATE
...

CUS_FACILITY_PRIMARY_INFO_VW
FACILITY_MAST_CUST
FACILITY_SUB_CUST
FacilityMastSubID
FACILITY_TYPE_CODE
FACILITY_SEARCH_NAME
FACILITY_LABEL_NAME
CUSTOMER_CLASS_CODE
FACILITY_STATUS_CODE
FACILITY_PRIMARY_PHONE
...

CUS_ACTIVITY
CUS_ACTIVITY_ID
ORG_ID
ORG_UNIT_ID
MASTER_CUSTOMER_ID
SUB_CUSTOMER_ID
SUBSYSTEM
ORDER_NO
ORDER_LINE_NO ...

EMAIL_TO_CODE
4, 24/2005
AUTHOR_ROLE_CODE
REVIEWER_ROLE_CODE
STAFF_ROLE_CODE
ORG_ID
ORG_UNIT_ID ...

ABS_CALL
ORG_ID
ORG_UNIT_ID
ABS_CALL_CODE
TITLE
DESCRIPTION
CALL_TYPE_CODE
CALL_START_DATE
CALL_END_DATE ...

ABS_SUBMISSION_PRODUCT_LINK

MTG_PRODUCT

PRODUCT_EVENT_INFO (PRODUCT)
PRODUCT_ID
ORG_ID
ORG_UNIT_ID
PARENT_PRODUCT
PRODUCT_CODE
SUBSYSTEM
SHORT_NAME
LONG_NAME ...

SESSION_WEB_TEXT (PRODUCT_TEXT)
PRODUCT_TEXT_ID
LANGUAGE
PRODUCT_ID
TEXT_TYPE_CODE
TEXT
ADDOPER
ADDDATE
MODOPER ...

W

VIEWER_ROLE_CODE
AFF_ROLE_CODE
G_ID
G_UNIT_ID
...

ABS_CALL
G_ID
G_UNIT_ID
G_CALL_CODE
LE
DESCRIPTION
L_TYPE_CODE
L_START_DATE
L_END_DATE
...

MTG_ROOM_ASSIGNMENT_VW

MTG_PRODUCT

PRIMARY_MTG_CUS_FACILITY_PRIMARY_INFO_VW (CUS_FACILITY_PRIMARY_INFO_VW)
--

PRODUCT_EVENT_INFO (PRODUCT)
...

EVENT_MEETING_INFO (PRODUCT)

PRODUCT_TYPE_EVENT_INFO_APP_CODE (APP_CODE)
--

PRODUCT_CLASS_EVENT_INFO_APP_CODE (APP_CODE)

SESSION_WEB_TEXT (PRODUCT_TEXT)
PRODUCT_TEXT_ID
LANGUAGE
PRODUCT_ID
TEXT_TYPE_CODE
TEXT
ADDOPER
ADDDATE
MODOPER
...