

Universe Parameters

Definition

Name: Abstract Call & Submission Setup

Description:

Connection: PersonifyQA

General information

Created: 1/13/2009 by Administrator

Modified: 4/20/2009 by Administrator

Comments:

Statistics:

- 27 Classes
- 202 Objects
- 22 Tables
- 23 Aliases
- 44 Joins
- 0 Contexts
- 0 Hierarchies
- 2 Conditions

Strategies

Join strategy: Edit Manually (none)

Table strategy: (Built-in) Standard

Object strategy: (Built-in) Standard Renaming

Controls

Limit size of result set to: 5000 rows

Limit size of long text objects to: 1000 characters

Limit execution time to: 10 minutes

Warn if cost estimate exceeds: unchecked

SQL parameters

Query

Allow use of subqueries: yes

Allow use of union, intersect and minus operators: yes

Allow complex conditions in Query Panel: yes

Cartesian products: warn

Multiple paths

Generate several SQL statements for each context: yes

Generate several SQL statements for each measure: yes

Allow selection of multiple contexts: no

Links

No links for this universe

Object List

No classes

Condition List

No Conditions

Hierarchies List

No Hierarchies

Tables List

ABS_CALL
ABS_CALL_SUBMISSION_TYPE
ABS_CALL_SUBMISSION_TYPE_AUTHOR_DISCLOSURE_CONTROL
ABS_CALL_SUBMISSION_TYPE_DISCLOSURE_QUESTION_CONTROL
ABS_CALL_SUBMISSION_TYPE_FILE_TYPE_CONTROL
ABS_CALL_SUBMISSION_TYPE_INSTRUCTION
ABS_CALL_SUBMISSION_TYPE_KEYWORD
ABS_CALL_SUBMISSION_TYPE_PRODUCT_LINK
ABS_CALL_SUBMISSION_TYPE_REVIEWER
ABS_CALL_SUBMISSION_TYPE_REVIEWER_EVALUATION_CONTROL
ABS_CALL_SUBMISSION_TYPE_REVIEW_BOARD
ABS_CALL_SUBMISSION_TYPE_REVIEW_BOARD_MEMBER
ABS_CALL_SUBMISSION_TYPE_REVIEW_PROCESS
ABS_CALL_SUBMISSION_TYPE_REVIEW_PROCESS_EMAIL
ABS_CALL_SUBMISSION_TYPE_SCORING_CONTROL
ABS_CALL_SUBMISSION_TYPE_STAFF
ABS_CALL_SUBMISSION_TYPE_TEXT_BLOCK_CONTROL
ABS_CALL_SUBMISSION_TYPE_TOPIC
APP_CODE
APP_CODE_ANSWER_TYPE
APP_CODE_AUTHOR_DISCLOSURE
APP_CODE_INSTRUCTION
APP_CODE_KEYWORD_CONTROL
APP_CODE_PARTICIPATION_REASON
APP_CODE_PARTICIPATION_REASON_REVIEWER
APP_CODE_RESULTING_ASSIGNMENT_STATUS
APP_CODE_RESULTING_EXTERNAL_STATUS
APP_CODE_RESULTING_INTERNAL_STATUS
APP_CODE_REVIEWER_APPROVED_FOR
APP_CODE_REVIEWER_CRITERION

APP_CODE_REVIEWER_ROLE
APP_CODE_REVIEWER_ROLE_BOARD
APP_CODE_REVIEWER_SOURCE
APP_CODE_SCORING_ANSWER
APP_CODE_STAFF_ROLE
APP_CODE_TOPIC
APP_CODE_TOPIC_CONTROL
APP_CODE_VALIDATION_KEYWORD
CUSTOMER
CUSTOMER_EMPLOYER
CUSTOMER_REVIEWER
CUS_RELATIONSHIP
PRODUCT
PRODUCT_LINK
PRODUCT_PARENT

Join List

Join0: ABS_CALL.ORG_ID=ABS_CALL_SUBMISSION_TYPE.ORG_ID and ABS_CALL.ORG_UNIT_ID=ABS_CALL_SUBMISSION_TYPE.ORG_UNIT_ID and ABS_CALL.ABS_CALL_CODE=ABS_CALL_SUBMISSION_TYPE.ABS_CALL_CODE

Join1: ABS_CALL_SUBMISSION_TYPE.ORG_ID=ABS_CALL_SUBMISSION_TYPE.TOPIC.ORG_ID and ABS_CALL_SUBMISSION_TYPE.ORG_UNIT_ID=ABS_CALL_SUBMISSION_TYPE.TOPIC.ORG_UNIT_ID and ABS_CALL_SUBMISSION_TYPE.ABS_CALL_CODE=ABS_CALL_SUBMISSION_TYPE.TOPIC.ABS_CALL_CODE and ABS_CALL_SUBMISSION_TYPE.SUBMISSION_TYPE_CODE=ABS_CALL_SUBMISSION_TYPE.TOPIC.SUBMISSION_TYPE_CODE

Join2: ABS_CALL_SUBMISSION_TYPE.ORG_ID=ABS_CALL_SUBMISSION_TYPE.KEYWORD.ORG_ID and ABS_CALL_SUBMISSION_TYPE.ORG_UNIT_ID=ABS_CALL_SUBMISSION_TYPE.KEYWORD.ORG_UNIT_ID and ABS_CALL_SUBMISSION_TYPE.ABS_CALL_CODE=ABS_CALL_SUBMISSION_TYPE.KEYWORD.ABS_CALL_CODE and ABS_CALL_SUBMISSION_TYPE.SUBMISSION_TYPE_CODE=ABS_CALL_SUBMISSION_TYPE.KEYWORD.SUBMISSION_TYPE_CODE

CODE=ABS_CALL_SUBMISSION_TYPE_KEYWORD.SUBMISSION_TYPE_CODE

Join3: ABS_CALL_SUBMISSION_TYPE.ORG_ID=ABS_CALL_SUBMISSION_TYPE_FILE_TYPE_CONTROL.ORG_ID and ABS_CALL_SUBMISSION_TYPE.ORG_UNIT_ID=ABS_CALL_SUBMISSION_TYPE_FILE_TYPE_CONTROL.ORG_UNIT_ID and ABS_CALL_SUBMISSION_TYPE.ABS_CALL_CODE=ABS_CALL_SUBMISSION_TYPE_FILE_TYPE_CONTROL.ABS_CALL_CODE and ABS_CALL_SUBMISSION_TYPE.SUBMISSION_TYPE_CODE=ABS_CALL_SUBMISSION_TYPE_FILE_TYPE_CONTROL.SUBMISSION_TYPE_CODE

Join4: ABS_CALL_SUBMISSION_TYPE_REVIEW_PROCESS.ORG_ID=ABS_CALL_SUBMISSION_TYPE.ORG_ID and ABS_CALL_SUBMISSION_TYPE_REVIEW_PROCESS.ORG_UNIT_ID=ABS_CALL_SUBMISSION_TYPE.ORG_UNIT_ID and ABS_CALL_SUBMISSION_TYPE_REVIEW_PROCESS.ABS_CALL_CODE=ABS_CALL_SUBMISSION_TYPE.ABS_CALL_CODE and ABS_CALL_SUBMISSION_TYPE_REVIEW_PROCESS.SUBMISSION_TYPE_CODE=ABS_CALL_SUBMISSION_TYPE.SUBMISSION_TYPE_CODE

Join5: ABS_CALL_SUBMISSION_TYPE_REVIEW_PROCESS_EMAIL.ABS_CALL_SUBMISSION_TYPE_REVIEW_PROCESS_ID=ABS_CALL_SUBMISSION_TYPE_REVIEW_PROCESS.ABS_CALL_SUBMISSION_TYPE_REVIEW_PROCESS_ID and ABS_CALL_SUBMISSION_TYPE_REVIEW_PROCESS_EMAIL.ORG_ID=ABS_CALL_SUBMISSION_TYPE_REVIEW_PROCESS.ORG_ID and ABS_CALL_SUBMISSION_TYPE_REVIEW_PROCESS_EMAIL.ORG_UNIT_ID=ABS_CALL_SUBMISSION_TYPE_REVIEW_PROCESS.ORG_UNIT_ID

Join6: ABS_CALL_SUBMISSION_TYPE.ORG_ID=ABS_CALL_SUBMISSION_TYPE_STAFF.ORG_ID and ABS_CALL_SUBMISSION_TYPE

.ORG_UNIT_ID=ABS_CALL_SUBMISSION
_TYPE_STAFF.ORG_UNIT_ID and ABS_C
ALL_SUBMISSION_TYPE.ABS_CALL_CODE
=ABS_CALL_SUBMISSION_TYPE_STAFF.A
BS_CALL_CODE and ABS_CALL_SUBMISS
ION_TYPE.SUBMISSION_TYPE_CODE=AB
S_CALL_SUBMISSION_TYPE_STAFF.SUBM
ISSION_TYPE_CODE

Join7: ABS_CALL_SUBMISSION_TYPE.ORG_ID=
ABS_CALL_SUBMISSION_TYPE_AUTHOR_
DISCLOSURE_CONTROL.ORG_ID and ABS
_CALL_SUBMISSION_TYPE.ORG_UNIT_ID
=ABS_CALL_SUBMISSION_TYPE_AUTHOR_
_DISCLOSURE_CONTROL.ORG_UNIT_ID
and ABS_CALL_SUBMISSION_TYPE.ABS_
CALL_CODE=ABS_CALL_SUBMISSION_TY
PE_AUTHOR_DISCLOSURE_CONTROL.ABS
_CALL_CODE and ABS_CALL_SUBMISSIO
N_TYPE.SUBMISSION_TYPE_CODE=ABS_
CALL_SUBMISSION_TYPE_AUTHOR_DISC
LOSURE_CONTROL.SUBMISSION_TYPE_C
ODE

Join8: ABS_CALL_SUBMISSION_TYPE.ORG_ID=
ABS_CALL_SUBMISSION_TYPE_DISCLOS
URE_QUESTION_CONTROL.ORG_ID and
ABS_CALL_SUBMISSION_TYPE.ORG_UNI
T_ID=ABS_CALL_SUBMISSION_TYPE_DIS
CLOSURE_QUESTION_CONTROL.ORG_UNI
T_ID and ABS_CALL_SUBMISSION_TYPE
.ABS_CALL_CODE=ABS_CALL_SUBMISSIO
N_TYPE_DISCLOSURE_QUESTION_CONTR
OL.ABS_CALL_CODE and ABS_CALL_SUB
MISSION_TYPE.SUBMISSION_TYPE_COD
E=ABS_CALL_SUBMISSION_TYPE_DISCL
OSURE_QUESTION_CONTROL.SUBMISSIO
N_TYPE_CODE

Join9: ABS_CALL_SUBMISSION_TYPE_INSTRUC
TION.ORG_ID=ABS_CALL_SUBMISSION_
TYPE.ORG_ID and ABS_CALL_SUBMISSI
ON_TYPE_INSTRUCTION.ORG_UNIT_ID=
ABS_CALL_SUBMISSION_TYPE.ORG_UNI
T_ID and ABS_CALL_SUBMISSION_TYPE
_INSTRUCTION.ABS_CALL_CODE=ABS_C

ALL_SUBMISSION_TYPE.ABS_CALL_CODE
and ABS_CALL_SUBMISSION_TYPE_INSTRUC
TION.SUBMISSION_TYPE_CODE=ABS
S_CALL_SUBMISSION_TYPE.SUBMISSION
_TYPE_CODE

Join10: ABS_CALL_SUBMISSION_TYPE.ORG_ID=
ABS_CALL_SUBMISSION_TYPE_TEXT_BLO
CK_CONTROL.ORG_ID and ABS_CALL_S
UBMISSION_TYPE.ORG_UNIT_ID=ABS_C
ALL_SUBMISSION_TYPE_TEXT_BLOCK_C
ONTROL.ORG_UNIT_ID and ABS_CALL_S
UBMISSION_TYPE.ABS_CALL_CODE=ABS
_CALL_SUBMISSION_TYPE_TEXT_BLOCK
_CONTROL.ABS_CALL_CODE and ABS_CA
LL_SUBMISSION_TYPE.SUBMISSION_TY
PE_CODE=ABS_CALL_SUBMISSION_TYPE
TEXT_BLOCK_CONTROL.SUBMISSION_TY
PE_CODE

Join11: ABS_CALL_SUBMISSION_TYPE.ORG_ID=
ABS_CALL_SUBMISSION_TYPE_PRODUCT
_LINK.ORG_ID and ABS_CALL_SUBMISS
ION_TYPE.ORG_UNIT_ID=ABS_CALL_SU
BMISSION_TYPE_PRODUCT_LINK.ORG_U
NIT_ID and ABS_CALL_SUBMISSION_TY
PE.ABS_CALL_CODE=ABS_CALL_SUBMIS
SION_TYPE_PRODUCT_LINK.ABS_CALL_C
ODE and ABS_CALL_SUBMISSION_TYPE.
SUBMISSION_TYPE_CODE=ABS_CALL_SU
BMISSION_TYPE_PRODUCT_LINK.SUBMI
SSION_TYPE_CODE

Join12: ABS_CALL_SUBMISSION_TYPE_REVIEW_
BOARD.ORG_ID=ABS_CALL_SUBMISSION
_TYPE.ORG_ID and ABS_CALL_SUBMISS
ION_TYPE_REVIEW_BOARD.ORG_UNIT_I
D=ABS_CALL_SUBMISSION_TYPE.ORG_U
NIT_ID and ABS_CALL_SUBMISSION_TY
PE_REVIEW_BOARD.ABS_CALL_CODE=AB
S_CALL_SUBMISSION_TYPE.ABS_CALL_C
ODE and ABS_CALL_SUBMISSION_TYPE_
REVIEW_BOARD.SUBMISSION_TYPE_COD
E=ABS_CALL_SUBMISSION_TYPE.SUBMIS
SION_TYPE_CODE

- Join13: ABS_CALL_SUBMISSION_TYPE_REVIEW_BOARD.ABS_CALL_SUBMISSION_TYPE_REVIEW_BOARD_ID=ABS_CALL_SUBMISSION_TYPE_REVIEW_BOARD_MEMBER.ABS_CALL_SUBMISSION_TYPE_REVIEW_BOARD_ID
- Join14: ABS_CALL_SUBMISSION_TYPE_REVIEW_BOARD_MEMBER.MASTER_CUSTOMER_ID=CUSTOMER.MASTER_CUSTOMER_ID and ABS_CALL_SUBMISSION_TYPE_REVIEW_BOARD_MEMBER.SUB_CUSTOMER_ID=CUSTOMER.SUB_CUSTOMER_ID
- Join15: ABS_CALL_SUBMISSION_TYPE.ORG_ID=ABS_CALL_SUBMISSION_TYPE_REVIEWER.ORG_ID and ABS_CALL_SUBMISSION_TYPE.ORG_UNIT_ID=ABS_CALL_SUBMISSION_TYPE_REVIEWER.ORG_UNIT_ID and ABS_CALL_SUBMISSION_TYPE.ABS_CALL_CODE=ABS_CALL_SUBMISSION_TYPE_REVIEWER.ABS_CALL_CODE and ABS_CALL_SUBMISSION_TYPE.SUBMISSION_TYPE_CODE=ABS_CALL_SUBMISSION_TYPE_REVIEWER.SUBMISSION_TYPE_CODE
- Join16: ABS_CALL_SUBMISSION_TYPE_REVIEWER.MASTER_CUSTOMER_ID=CUSTOMER_REVIEWER.MASTER_CUSTOMER_ID and ABS_CALL_SUBMISSION_TYPE_REVIEWER.SUB_CUSTOMER_ID=CUSTOMER_REVIEWER.SUB_CUSTOMER_ID
- Join17: ABS_CALL_SUBMISSION_TYPE_REVIEWER_EVALUATION_CONTROL.ORG_ID=ABS_CALL_SUBMISSION_TYPE.ORG_ID and ABS_CALL_SUBMISSION_TYPE_REVIEWER_EVALUATION_CONTROL.ORG_UNIT_ID=ABS_CALL_SUBMISSION_TYPE.ORG_UNIT_ID and ABS_CALL_SUBMISSION_TYPE_REVIEWER_EVALUATION_CONTROL.ABS_CALL_CODE=ABS_CALL_SUBMISSION_TYPE.ABS_CALL_CODE and ABS_CALL_SUBMISSION_TYPE_REVIEWER_EVALUATION_CONTROL.SUBMISSION_TYPE_CODE=ABS_CALL_SUBMISSION_TYPE.SUBMISSION

N_TYPE_CODE

- Join18: ABS_CALL_SUBMISSION_TYPE.ORG_ID=ABS_CALL_SUBMISSION_TYPE_SCORING_CONTROL.ORG_ID and ABS_CALL_SUBMISSION_TYPE.ORG_UNIT_ID=ABS_CALL_SUBMISSION_TYPE_SCORING_CONTROL.ORG_UNIT_ID and ABS_CALL_SUBMISSION_TYPE.ABS_CALL_CODE=ABS_CALL_SUBMISSION_TYPE_SCORING_CONTROL.ABS_CALL_CODE and ABS_CALL_SUBMISSION_TYPE.SUBMISSION_TYPE_CODE=ABS_CALL_SUBMISSION_TYPE_SCORING_CONTROL.SUBMISSION_TYPE_CODE
- Join19: APP_CODE.SUBSYSTEM='ABS' and APP_CODE.TYPE='SUBMISSION_TYPE' and ABS_CALL_SUBMISSION_TYPE.SUBMISSION_TYPE_CODE=APP_CODE.CODE
- Join20: PRODUCT_PARENT.ORG_ID=ABS_CALL_SUBMISSION_TYPE_PRODUCT_LINK.ORG_ID and PRODUCT_PARENT.ORG_UNIT_ID=ABS_CALL_SUBMISSION_TYPE_PRODUCT_LINK.ORG_UNIT_ID and PRODUCT_PARENT.PARENT_PRODUCT=ABS_CALL_SUBMISSION_TYPE_PRODUCT_LINK.PARENT_PRODUCT
- Join21: PRODUCT.ORG_ID=ABS_CALL.ORG_ID and PRODUCT.ORG_UNIT_ID=ABS_CALL.ORG_UNIT_ID and PRODUCT.PRODUCT_CODE=ABS_CALL.PRIMARY_PRODUCT_CODE
- Join22: APP_CODE_TOPIC_CONTROL.SUBSYSTEM='ABS' and APP_CODE_TOPIC_CONTROL.TYPE='VALIDATE_TOPIC_CONTROL' and ABS_CALL_SUBMISSION_TYPE.VALIDATION_TOPIC_CODE=APP_CODE_TOPIC_CONTROL.CODE
- Join23: APP_CODE_TOPIC.SUBSYSTEM='ABS' and APP_CODE_TOPIC.TYPE='SUBMISSION_TYPE_TOPIC' and ABS_CALL_SUBMISSION_TYPE_TOPIC.TOPIC_CODE=APP_C

ODE_TOPIC.CODE

Join24: APP_CODE_KEYWORD_CONTROL.SUBSYSTEM='ABS' and APP_CODE_KEYWORD_CONTROL.TYPE='VALIDATE_KEYWORD_CONTROL' and ABS_CALL_SUBMISSION_TYPE.VALIDATE_KEYWORD_CONTROL_CODE=APP_CODE_KEYWORD_CONTROL.CODE

Join25: APP_CODE_VALIDATION_KEYWORD.SUBSYSTEM='ABS' and APP_CODE_VALIDATION_KEYWORD.TYPE='VALIDATION_KEYWORD' and ABS_CALL_SUBMISSION_TYPE.VALIDATION_KEYWORD_CODE=APP_CODE_VALIDATION_KEYWORD.CODE

Join26: APP_CODE_REVIEWER_APPROVED_FOR.SUBSYSTEM='ABS' and APP_CODE_REVIEWER_APPROVED_FOR.TYPE='REVIEWER_APPROVED_FOR' and ABS_CALL_SUBMISSION_TYPE.REVIEWER_APPROVED_FOR_CODE=APP_CODE_REVIEWER_APPROVED_FOR.CODE

Join27: APP_CODE_RESULTING_EXTERNAL_STATUS.SUBSYSTEM='ABS' and APP_CODE_RESULTING_EXTERNAL_STATUS.TYPE='RESULTING_EXTERNAL_STATUS' and ABS_CALL_SUBMISSION_TYPE_REVIEW_PROCESS.RESULTING_EXTERNAL_STATUS_CODE=APP_CODE_RESULTING_EXTERNAL_STATUS.CODE

Join28: APP_CODE_RESULTING_INTERNAL_STATUS.SUBSYSTEM='ABS' and APP_CODE_RESULTING_INTERNAL_STATUS.TYPE='RESULTING_INTERNAL_STATUS' and ABS_CALL_SUBMISSION_TYPE_REVIEW_PROCESS.RESULTING_INTERNAL_STATUS_CODE=APP_CODE_RESULTING_INTERNAL_STATUS.CODE

Join29: APP_CODE_RESULTING_ASSIGNMENT_STATUS.SUBSYSTEM='ABS' and APP_CODE_RESULTING_ASSIGNMENT_STATUS.TYPE='RESULTING_ASSIGNMENT_STATUS'

' and ABS_CALL_SUBMISSION_TYPE_REVIEW_PROCESS.RESULTING_ASSIGNMENT_STATUS_CODE=APP_CODE_RESULTING_ASSIGNMENT_STATUS.CODE

Join30: APP_CODE_STAFF_ROLE.SUBSYSTEM='ABS' and APP_CODE_STAFF_ROLE.TYPE='STAFF_ROLE' and APP_CODE_STAFF_ROLE.CODE=ABS_CALL_SUBMISSION_TYPE_STAFF.STAFF_ROLE_CODE

Join31: APP_CODE_REVIEWER_ROLE.SUBSYSTEM='ABS' and APP_CODE_REVIEWER_ROLE.TYPE='REVIEWER_ROLE' and ABS_CALL_SUBMISSION_TYPE_REVIEW_PROCESS.EMAIL.REVIEWER_ROLE_CODE=APP_CODE_REVIEWER_ROLE.CODE

Join32: APP_CODE_AUTHOR_DISCLOSURE.SUBSYSTEM='ABS' and APP_CODE_AUTHOR_DISCLOSURE.TYPE='DISCLOSURE_RELATIONSHIP' and ABS_CALL_SUBMISSION_TYPE_AUTHOR_DISCLOSURE_CONTROL.DISCLOSURE_RELATIONSHIP_CODE=APP_CODE_AUTHOR_DISCLOSURE.CODE

Join33: APP_CODE_INSTRUCTION.SUBSYSTEM='ABS' and APP_CODE_INSTRUCTION.TYPE='INSTRUCTION_TYPE' and ABS_CALL_SUBMISSION_TYPE_INSTRUCTION.INSTRUCTION_TYPE_CODE=APP_CODE_INSTRUCTION.CODE

Join34: APP_CODE_REVIEWER_ROLE_BOARD.SUBSYSTEM='ABS' and APP_CODE_REVIEWER_ROLE_BOARD.TYPE='REVIEWER_ROLE' and ABS_CALL_SUBMISSION_TYPE_REVIEW_BOARD_MEMBER.REVIEWER_ROLE_CODE=APP_CODE_REVIEWER_ROLE_BOARD.CODE

Join35: APP_CODE_PARTICIPATION_REASON.SUBSYSTEM='ABS' and APP_CODE_PARTICIPATION_REASON.TYPE='PARTICIPATION_REASON' and ABS_CALL_SUBMISSION_TYPE_REVIEW_BOARD_MEMBER.PART

- ICIPATION_REASON_CODE=APP_CODE_P
ARTICIPATION_REASON.CODE
- Join36: APP_CODE_PARTICIPATION_REASON_RE
VIEWER.SUBSYSTEM ='ABS' and APP_C
ODE_PARTICIPATION_REASON_REVIEWE
R.TYPE = 'PARTICIPATION_REASON' a
nd ABS_CALL_SUBMISSION_TYPE_REVIEWE
R.PARTICIPATION_REASON_CODE=AP
P_CODE_PARTICIPATION_REASON_REVI
EWER.CODE
- Join37: APP_CODE_REVIEWER_SOURCE.SUBSYST
EM ='ABS' and APP_CODE_REVIEWER_S
OURCE.TYPE = 'REVIEWER_SOURCE' an
d ABS_CALL_SUBMISSION_TYPE_REVIEWE
R.REVIEWER_SOURCE_CODE=APP_CODE
_REVIEWER_SOURCE.CODE
- Join38: APP_CODE_REVIEWER_CRITERION.SUBS
YSTEM ='ABS' and APP_CODE_REVIEWE
R_CRITERION.TYPE = 'REVIEWER_EVAL
_CRITERION' and ABS_CALL_SUBMISSI
ON_TYPE_REVIEWER_EVALUATION_CONT
ROL.REVIEWER_EVAL_CRITERION_CODE
=APP_CODE_REVIEWER_CRITERION.COD
E
- Join39: APP_CODE_ANSWER_TYPE.SUBSYSTEM =
'ABS' and APP_CODE_ANSWER_TYPE.T
YPE = 'ANSWER_TYPE' and ABS_CALL_
SUBMISSION_TYPE_SCORING_CONTROL.
ANSWER_TYPE_CODE=APP_CODE_ANSWE
R_TYPE.CODE
- Join40: APP_CODE_SCORING_ANSWER.SUBSYSTE
M =' ABS' and APP_CODE_SCORING_AN
SWER.TYPE = 'SCORING_ANSWER' and
ABS_CALL_SUBMISSION_TYPE_SCORING
_CONTROL.SCORING_ANSWER_CODE=APP
_CODE_SCORING_ANSWER.CODE
- Join41: ABS_CALL_SUBMISSION_TYPE_REVIEWE
R.MASTER_CUSTOMER_ID=CUS_RELATIO
NSHIP.MASTER_CUSTOMER_ID and ABS_
CALL_SUBMISSION_TYPE_REVIEWER.SU

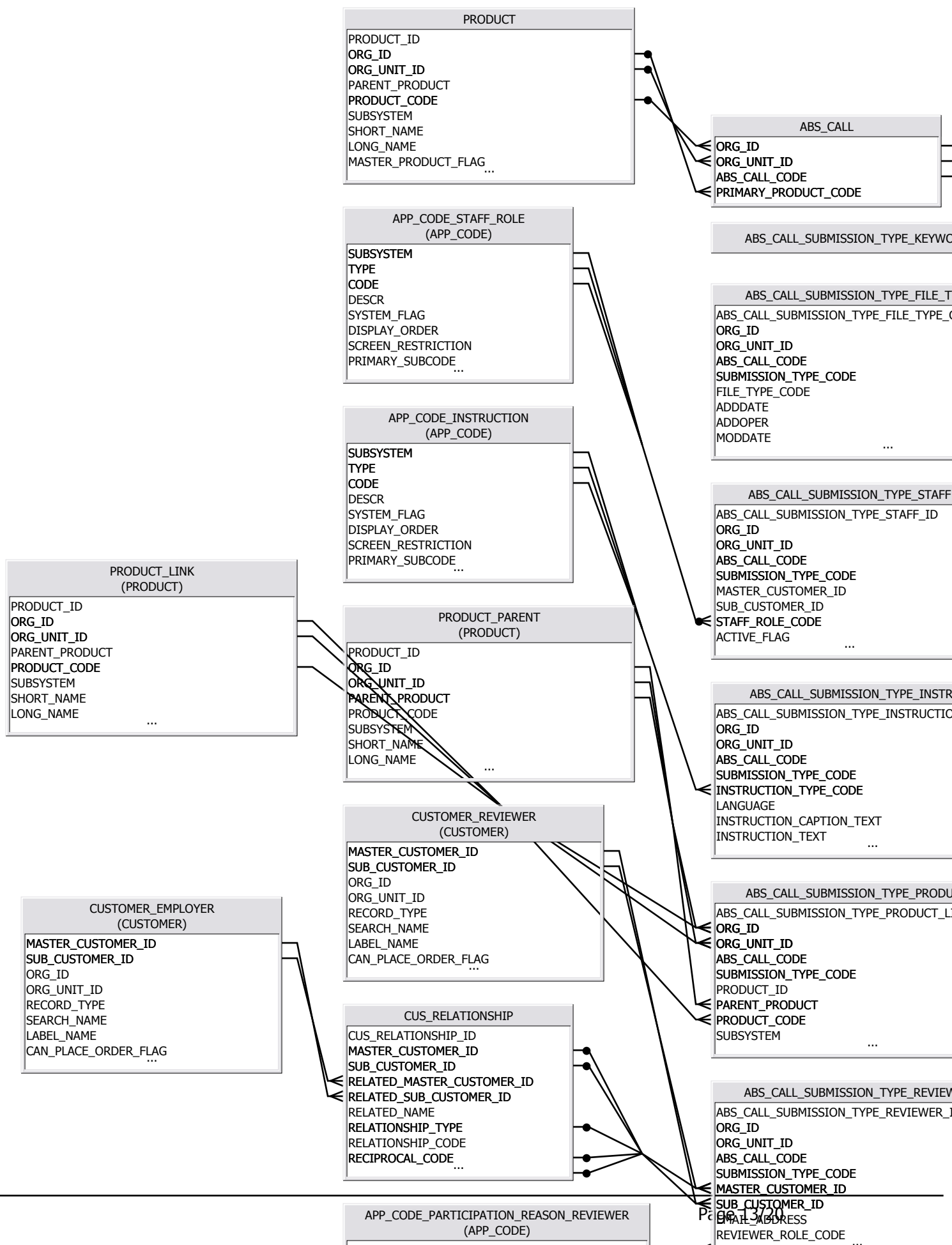
B_CUSTOMER_ID=CUS_RELATIONSHIP.SUB_CUSTOMER_ID and CUS_RELATIONSHIP.RELATIONSHIP_TYPE='EMPLOYMENT' and CUS_RELATIONSHIP.RECIPROCAL_CODE='EMPLOYEE' and CUS_RELATIONSHIP.PRIMARY_EMPLOYER_FLAG='Y'

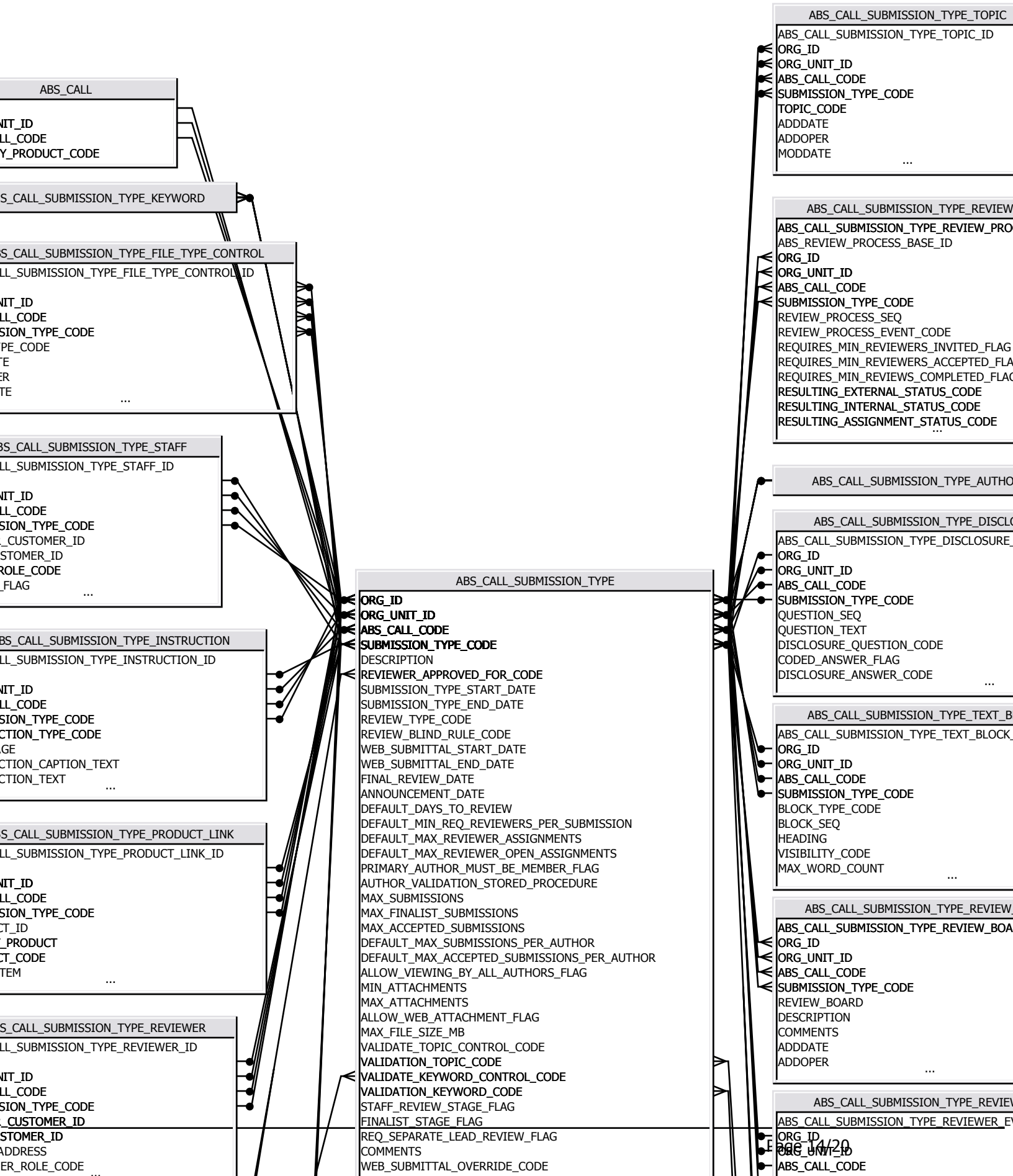
Join42: CUS_RELATIONSHIP.RELATED_MASTER_CUSTOMER_ID=CUSTOMER_EMPLOYER.MASTER_CUSTOMER_ID and CUS_RELATIONSHIP.RELATED_SUB_CUSTOMER_ID=CUSTOMER_EMPLOYER.SUB_CUSTOMER_ID

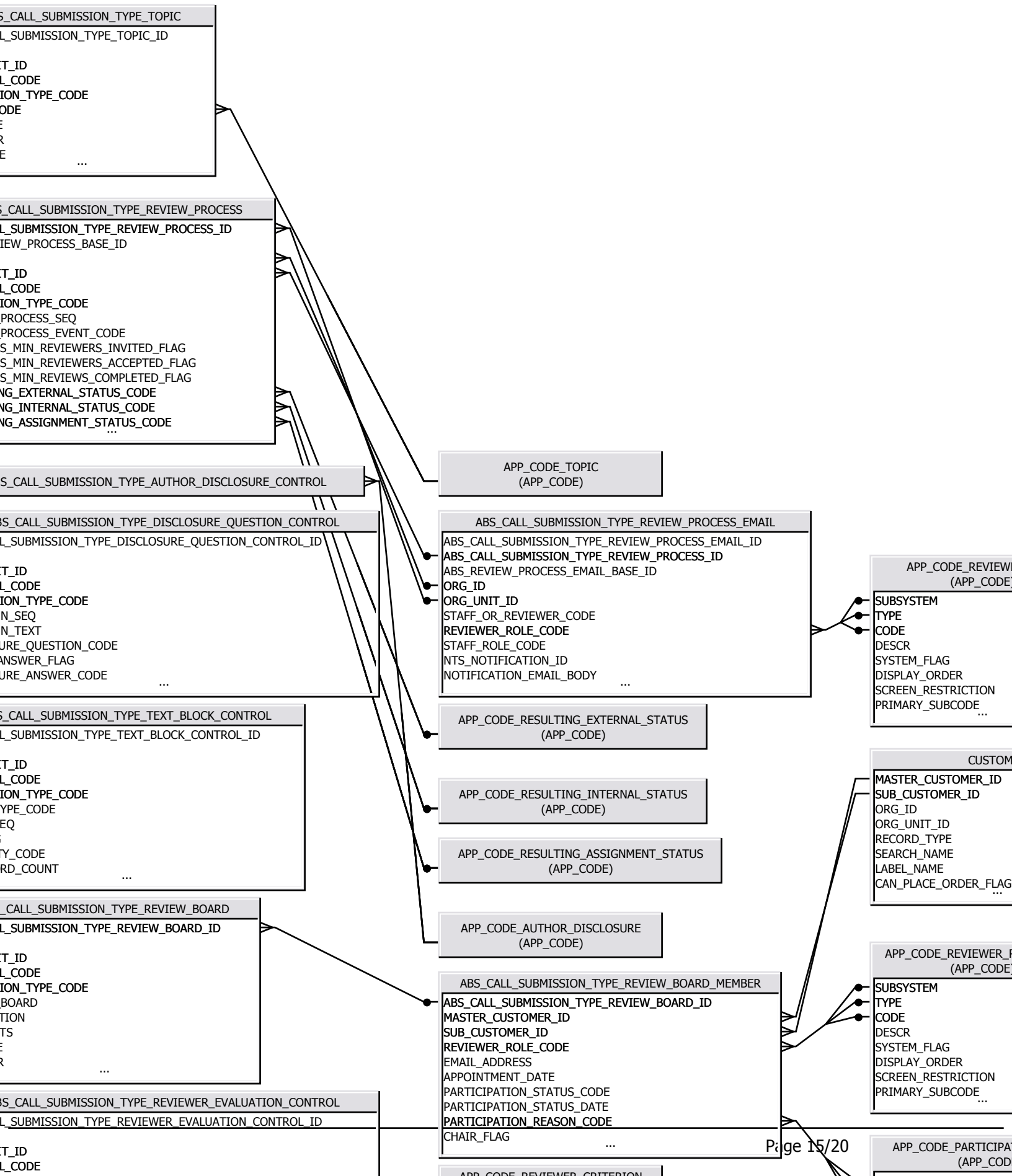
Join43: PRODUCT_LINK.ORG_ID=ABS_CALL_SUBMISSION_TYPE_PRODUCT_LINK.ORG_ID and PRODUCT_LINK.ORG_UNIT_ID=ABS_CALL_SUBMISSION_TYPE_PRODUCT_LINK.ORG_UNIT_ID and PRODUCT_LINK.PRODUCT_CODE=ABS_CALL_SUBMISSION_TYPE_PRODUCT_LINK.PRODUCT_CODE

Context List

No context







APP_CODE_REVIEWER_ROLE (APP_CODE)	
●	SUBSYSTEM
●	TYPE
●	CODE
	DESCR
	SYSTEM_FLAG
	DISPLAY_ORDER
	SCREEN_RESTRICTION
	PRIMARY_SUBCODE
	...

CUSTOMER	
●	MASTER_CUSTOMER_ID
●	SUB_CUSTOMER_ID
	ORG_ID
	ORG_UNIT_ID
	RECORD_TYPE
	SEARCH_NAME
	LABEL_NAME
	CAN_PLACE_ORDER_FLAG
	...

APP_CODE_REVIEWER_ROLE_BOARD (APP_CODE)	
●	SUBSYSTEM
●	TYPE
●	CODE
	DESCR
	SYSTEM_FLAG
	DISPLAY_ORDER
	SCREEN_RESTRICTION
	PRIMARY_SUBCODE
	...

APP_CODE_PARTICIPATION_REASON (APP_CODE)	
---	--

MASTER_CUSTOMER_ID
SUB_CUSTOMER_ID
RELATED_MASTER_CUSTOMER_ID
RELATED_SUB_CUSTOMER_ID
RELATIONSHIP_NAME
RELATIONSHIP_TYPE
RELATIONSHIP_CODE
RECIPROCAL_CODE
...

ABS_CALL_SUBMISSION_TYPE_REVIEWER
ABS_CALL_SUBMISSION_TYPE_REVIEWER_ID
ORG_ID
ORG_UNIT_ID
ABS_CALL_CODE
SUBMISSION_TYPE_CODE
MASTER_CUSTOMER_ID
SUB_CUSTOMER_ID
EMAIL_ADDRESS
REVIEWER_ROLE_CODE
...

APP_CODE_PARTICIPATION_REASON_REVIEWER (APP_CODE)
SUBSYSTEM
TYPE
CODE
DESCR
SYSTEM_FLAG
DISPLAY_ORDER
SCREEN_RESTRICTION
PRIMARY_SUBCODE
...

ABS_CALL_SUBMISSION_TYPE_SCORING
ABS_CALL_SUBMISSION_TYPE_SCORING_CODE
ORG_ID
ORG_UNIT_ID
ABS_CALL_CODE
SUBMISSION_TYPE_CODE
SUBMISSION_SCORING_CRITERION_SEQ
SUBMISSION_SCORING_CRITERION_DESCR
SCORING_CRITERION_CODE
ANSWER_TYPE_CODE
...

APP_CODE_REVIEWER_SOURCE (APP_CODE)
SUBSYSTEM
TYPE
CODE
DESCR
SYSTEM_FLAG
DISPLAY_ORDER
SCREEN_RESTRICTION
PRIMARY_SUBCODE
...

APP_CODE_REVIEWER_APPROVED_FOR (APP_CODE)
SUBSYSTEM
TYPE
CODE
DESCR
SYSTEM_FLAG
DISPLAY_ORDER
SCREEN_RESTRICTION
PRIMARY_SUBCODE
...

APP_CODE_ANSWER_TYPE (APP_CODE)
SUBSYSTEM
TYPE
CODE
DESCR
SYSTEM_FLAG
DISPLAY_ORDER
SCREEN_RESTRICTION
PRIMARY_SUBCODE
...

APP_CODE_KEYWORD_CONTROL (APP_CODE)
SUBSYSTEM
TYPE
CODE
DESCR
SYSTEM_FLAG
DISPLAY_ORDER
SCREEN_RESTRICTION
PRIMARY_SUBCODE
...

APP_CODE_SCORING_ANSWER (APP_CODE)
SUBSYSTEM
TYPE
CODE
DESCR
SYSTEM_FLAG
DISPLAY_ORDER
SCREEN_RESTRICTION
PRIMARY_SUBCODE
...

Universe: Abstract Call & Submission Setup

ABS_CALL_SUBMISSION_TYPE_REVIEWER
ABS_CALL_SUBMISSION_TYPE_REVIEWER_ID
UNIT_ID
CALL_CODE
SUBMISSION_TYPE_CODE
CUSTOMER_ID
STOMER_ID
ADDRESS
REVIEWER_ROLE_CODE ...

ABS_CALL_SUBMISSION_TYPE_SCORING_CONTROL
ABS_CALL_SUBMISSION_TYPE_SCORING_CONTROL_ID
UNIT_ID
CALL_CODE
SUBMISSION_TYPE_CODE
SUBMISSION_SCORING_CRITERION_SEQ
SUBMISSION_SCORING_CRITERION_DESCR
SCORING_CRITERION_CODE
REVIEWER_TYPE_CODE ...

ABS_CODE_REVIEWER_APPROVED_FOR (APP_CODE)
ITEM
_FLAG
_Y_ORDER
_RESTRICTION
_Y_SUBCODE ...

ABS_CODE_KEYWORD_CONTROL (APP_CODE)
ITEM
_FLAG
_Y_ORDER
_RESTRICTION
_Y_SUBCODE ...

MIN_ATTACHMENTS
MAX_ATTACHMENTS
ALLOW_WEB_ATTACHMENT_FLAG
MAX_FILE_SIZE_MB
VALIDATE_TOPIC_CONTROL_CODE
VALIDATION_TOPIC_CODE
VALIDATE_KEYWORD_CONTROL_CODE
VALIDATION_KEYWORD_CODE
STAFF_REVIEW_STAGE_FLAG
FINALIST_STAGE_FLAG
REQ_SEPARATE_LEAD_REVIEW_FLAG
COMMENTS
WEB_SUBMITTAL_OVERRIDE_CODE
ALLOW_SUBMISSION_REQUIREMENTS_FLAG
SETUP_COMPLETED_FLAG
ADDDATE
ADDOPER
MODDATE
MODOPER
CONCURRENCY_ID

SUBMISSION_TYPE_CODE
REVIEWER_ROLE_CODE
DESCRIPTION
COMMENTS
ADDDATE
ADDOPER
...

ABS_CALL_SUBMISSION_TYPE_REVIEWER
ABS_CALL_SUBMISSION_TYPE_REVIEWER_EV
ORG_ID
ORG_UNIT_ID
ABS_CALL_CODE
SUBMISSION_TYPE_CODE
REVIEWER_EVALUATION_CRITERION_SEQ
REVIEWER_EVALUATION_CRITERION_DESCR
REVIEWER_EVAL_CRITERION_CODE
COMMENTS
ADDDATE
...

APP_CODE
SUBSYSTEM
TYPE
CODE
DESCR
SYSTEM_FLAG
DISPLAY_ORDER
SCREEN_RESTRICTION
PRIMARY_SUBCODE
ACTIVE_FLAG
STATUS_CHANGE_DATE
...

APP_CODE_TOPIC_CONTROL (APP_CODE)
SUBSYSTEM
TYPE
CODE
DESCR
SYSTEM_FLAG
DISPLAY_ORDER
SCREEN_RESTRICTION
PRIMARY_SUBCODE
ACTIVE_FLAG
...

APP_CODE_VALIDATION_KEYWORD (APP_CODE)
SUBSYSTEM
TYPE
CODE
DESCR
SYSTEM_FLAG
DISPLAY_ORDER
SCREEN_RESTRICTION
PRIMARY_SUBCODE
ACTIVE_FLAG
...

SUBSYSTEM
TYPE
CODE
DESCR
SYSTEM_FLAG
DISPLAY_ORDER
SCREEN_RESTRICTION
PRIMARY_SUBCODE
...

APP_CODE_PARTICIPATION_REASON (APP_CODE)
SUBSYSTEM
TYPE
CODE
DESCR
SYSTEM_FLAG
DISPLAY_ORDER
SCREEN_RESTRICTION
PRIMARY_SUBCODE
...